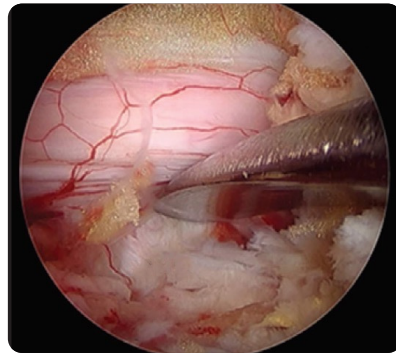
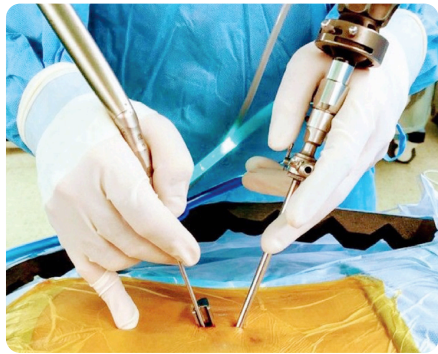




— dualPortal™ —

HOW TO GET STARTED



1. Endoscope System w/ Light Source & Monitor, 0-degree or 30-degree
2. Coblation Wand, 90-degree
3. Resection Bone Shaver with Cone Fluted Tip
4. High-speed Surgical Drill w/ Long, Angled Attachment, 3 or 4 mm Diamond Bur Tip
5. Kerrison Rongeurs, 2mm or 3mm
6. Woodson Elevator
7. Penfield Elevator, #2 & #4
8. Ball Tipped Probe, 90-degree
9. Nerve Hook Retractor
10. Curette, straight/angled, 3/0
11. Pituitary Rongeurs, straight/up, 2mm or 3mm
12. Micropituitary Rongeurs, straight/up, 1.5mm or 2mm
13. K-wire
14. Spinal Needle, 18G
15. Irrigation Pump (can also do gravity, 1 meter above the patient's back)
16. Closure System for Dural Tissue
17. Hemostatic Agent
18. Wilson Spine Frame on a regular Skytron OR table or OSI flattop
19. Tubular Retraction System (for initial tubes and instruments, can use as backup)
20. Drape for Endoscopic Procedure
21. Tissue Dissector or Sequential Dilator (back of scalpel handle can be used)
22. Amplify Surgical's dualX dualPortal Cannulas
23. Amplify Surgical's dualX dualPortal Hemostatic Agent Delivery Tube