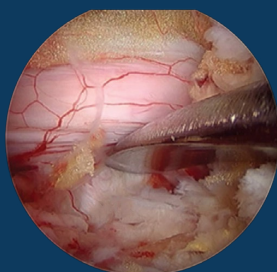
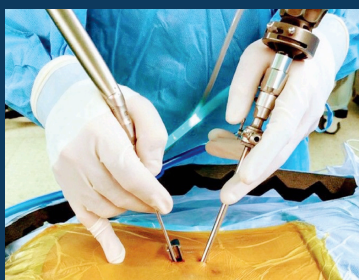




2ND ANNUAL AMPLIFY SURGICAL

ENDOSCOPIC SPINE SYMPOSIUM

FEATURING dualPortal® AND dualX® SYSTEMS

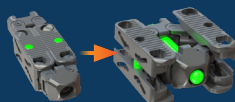


SAT, MARCH 4, 2023
LOS ANGELES, CA

UCLA CENTER FOR HEALTH SCIENCES

UCLA

David Geffen School of Medicine



dualX® T/PLIF

Welcome

TO THE 2ND ANNUAL AMPLIFY SURGICAL ENDOSCOPIC SPINE SYMPOSIUM

We at Amplify Surgical are proud to welcome you to the 2nd Annual Amplify Surgical Endoscopic Spine Symposium, here at the University of California, Los Angeles (UCLA). Through an immersive and comprehensive program, today's Symposium will feature our dualPortal® and dualX® Systems. We have assembled a panel of Symposium Faculty, nine leading experts from the United States and South Korea, to present, demonstrate, and guide you through these cutting-edge technologies. Our Symposium Faculty will first present research in the CH13-105 auditorium, on the first floor. After a break for exhibition viewing, the Symposium Faculty will lead the hands-on Cadaver Workshop in the Surgical Science Laboratory, first demonstrating and then extending personal instruction on the novel two-portal endoscopic approach (dualPortal®) and dual-expanding interbody implants (dualX®). We hope you can experience for yourself the power of Amplify Surgical's dualPortal® and dualX® Systems, by engaging in rigorous discussion and training.

Our Symposium Chair is Dr. Don Y. Park, Associate Clinical Professor and Vice Chair of Quality and Safety of the UCLA Department of Orthopaedic Surgery. We are honored to highlight his chairmanship and our partnership with David Geffen School of Medicine at UCLA and UCLA's Department of Orthopaedic Surgery for this 2nd Annual Endoscopic Spine Symposium.

This year's edition will showcase the incredible development of the dualPortal® and dualX® Systems here in the United States, building off the huge success of our Inaugural Amplify Surgical Endoscopic Spine Symposium last year, in 2022. More than half of today's Symposium Faculty are American surgeons, who have integrated Amplify Surgical's dualPortal® and dualX® Systems into their practices. In response to the tremendous interest over the past year, we organized regional trainings across the country and welcomed countless physicians into our dualPortal® and dualX® communities with their first cases. Events such as today's contribute tremendously to the advancement of endoscopic and minimally-invasive spine surgery, and we are grateful to our attendees and supporters for these contributions.

Thank you for joining us at the 2nd Annual Amplify Surgical Endoscopic Spine Symposium. We hope you leave today's meeting inspired and invigorated. We would also like to thank our corporate sponsors for supporting today's event. Lastly, we would like to recognize the following for their invaluable contributions to the 2nd Annual Amplify Surgical Endoscopic Spine Symposium: our visiting Symposium Faculty, Dr. Don Y. Park (Symposium Chair), the David Geffen School of Medicine at UCLA, the UCLA Department of Orthopaedic Surgery, and the UCLA Surgical Science Laboratory.

About Amplify Surgical, Inc.: Amplify Surgical is a privately-held spinal device company located in Irvine, CA. Our mission is to revolutionize minimally-invasive spine surgery by transforming ordinary procedures with groundbreaking surgical solutions that improve patient safety and outcomes.

Table of Contents

Introduction from Symposium Chair	3
Corporate Sponsors	4
Symposium Faculty	5
dualX® Dual Expanding Interbody System	6
Symposium Agenda	7
Biportal Endoscopic Versus Microscopic Discectomy for Lumbar Herniated Disc: A Randomized Controlled Trial, <i>The Spine Journal</i> (2023)	11
Biportal Endoscopic Versus Microscopic Lumbar Decompressive Laminectomy in Patients with Spinal Stenosis: A Randomized Controlled Trial, <i>The Spine Journal</i> (2020)	20
Indications, Contraindications, and Complications of Biportal Endoscopic Decompressive Surgery for the Treatment of Lumbar Stenosis: A Systematic Review, <i>World Neurosurgery</i> (2022)	30
Technique of Biportal Endoscopic Transforaminal Lumbar Interbody Fusion, <i>Neurospine</i> (2020)	40
Minimally Invasive Transforaminal Lumbar Interbody Fusion Using the Biportal Endoscopic Techniques Versus Microscopic Tubular Technique, <i>The Spine Journal</i> (2021)	49

Contact Us

If you are interested in more information, or you would like to place an order, please reach us at the following places. To be updated on the latest news from Amplify Surgical, follow us on social media.

EMAIL

info@amplifysurgical.com

PHONE

(765) AMPLIFY [(765) 267-5439]

ADDRESS

9272 Jeronimo Road, Suite 107B
Irvine, CA 92618

www.amplifysurgical.com

[@amplifysurgical](https://www.instagram.com/amplifysurgical)



Introduction from Symposium Chair



SYMPOSIUM CHAIR

Dr. Don Y. Park

Los Angeles, CA

Associate Clinical Professor

Vice Chair of Quality and Safety

UCLA HEALTH

The esteemed faculty thank you for your interest and participation in the 2nd Annual Amplify Surgical Endoscopic Spine Symposium. We are very excited to share the dualPortal® endoscopic technique, which we believe is the future of minimally invasive spine surgery.

The dualPortal® spinal endoscopy is a complete game-changer that will change the landscape of spine surgery. It is a truly enabling technique that obviates the need for retractors and microscope with significantly better magnification and visualization. The dualPortal® approach reduces the learning curve experienced with other endoscopic techniques because the visualization of the anatomy is so familiar.

We have assembled the best dualPortal® surgeons from both Korea and the US and put together a comprehensive series of lectures to learn about the technique. We are very fortunate to have the masters of dualPortal® endoscopic spine surgery from South Korea as faculty. The small group cadaver sessions will complement the learning experience in the cadaver lab. We are confident that the Symposium will bring the highest quality education and experience for all the participants.

I can't wait to see the excited faces of the participants as they learn about the technique at the Symposium. I see so many surgeons with the same look as I teach the dualPortal® technique across the US. I know that you too will come away from the Symposium blown away by dualPortal® endoscopic spine surgery.

Corporate Sponsors

THANK YOU TO OUR CORPORATE SPONSORS

FOR SUPPORTING THE 2ND ANNUAL AMPLIFY SURGICAL
ENDOSCOPIC SPINE SYMPOSIUM

GOLD SPONSORS



SILVER SPONSORS



BRONZE SPONSORS



CERAPEDICS
Enhancing the Science of Bone Repair



PERKINScoie
COUNSEL TO GREAT COMPANIES

SUPPORTERS

SOLCO.



엠디앤컴퍼니



Symposium Faculty

Meet our expert faculty

Expert faculty from the United States and South Korea will be on hand to present and demonstrate the dualPortal® endoscopic approach.



SYMPOSIUM CHAIR

Dr. Don Y. Park

Los Angeles, CA

UCLA HEALTH



Dr. Cheol Woong Park

Daejeon, South Korea

DAEJEON WOORI
HOSPITAL



Dr. Dong Hwa Heo

Seoul, South Korea

CPD SPINE HOSPITAL



Dr. Brian Kwon

Boston, MA

NEW ENGLAND
BAPTIST HOSPITAL



Dr. Nam Lee

Busan, South Korea

YONSEI CHEOK
HOSPITAL



Dr. Man Kyu Park

Busan, South Korea

GOOD MOONHWA
HOSPITAL



Dr. Jamie Gottlieb

Dallas, TX

GOTTLIEB SPINE



Dr. James Mok

Chicago, IL

NORTHSHORE UNIVERSITY
HEALTHSYSTEM



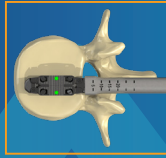
Dr. Nima Salari

Phoenix, AZ

DESERT INSTITUTE
FOR SPINE CARE

T/PLIF

TRANSFORAMINAL OR POSTERIOR
LUMBAR INTERBODY FUSION



Low-profile
protects
endplates
during insertion

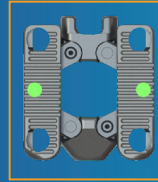


Coarse ridges assist
with initial implant
stability

Collapsed width and height
designed to reduce neural
retraction



Multiple lordotic
angles restore
sagittal balance



Large, center
bone graft
chamber for
post-expansion
grafting

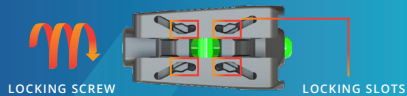
Lateral expansion establishes
stable footprint

Open design allows bone graft
to flow out to fill entire disc
space



Powerful vertical expansion
restores disc height for
decompression

DUAL-LOCKING



Innovative dual-locking
mechanism designed to maintain
integrity of implant until patient
is fused

COLLAPSED-EXPANDED HEIGHTS
FOR T/PLIF AVAILABLE AT:

7-9MM	9-12MM	
8-10MM	10-13MM	12-15MM
8-11MM	11-14MM	

LORDOTIC ANGLES AVAILABLE: 0°, 8°, 12°, 15°

dualX® accommodates
lateral, posterior, and
transforaminal approaches

Symposium Agenda

6:30AM

Exhibitor Access Opens - Booth Installation

7:00AM

Registration Opens

7:00AM - 7:45AM

Continental Breakfast

PRESENTATIONS

Location: CH13-105, 1st Floor

7:45AM - 8:00AM

Welcome Address

Don Y. Park, MD - SYMPOSIUM CHAIR

8:00AM - 8:15AM

James Mok, MD

Getting Started with dualPortal Endoscopic Spine Surgery

8:15AM - 8:30AM

Nima Salari, MD

What is dualPortal Endoscopic Spine Surgery and How Does it Differ from Uniportal Endoscopic Spine Surgery

8:30AM - 8:45AM

Jamie Gottlieb, MD

How to Optimize dualPortal Endoscopic Spine Surgery in the Outpatient ASC Setting

8:45AM - 9:00AM

Brian Kwon, MD

dualPortal Endoscopic Spine Surgery – Discectomy: Equipment Needed, How to Set Up the OR

9:00AM - 9:15AM

Cheol Woong Park, MD, PhD

dualPortal Endoscopic Spine Surgery – ULBD: Principles, Anatomy, Workflow

9:15AM - 9:30AM

Dong Hwa Heo, MD, PhD

dualPortal Endoscopic TLIF: Special Considerations

9:30AM - 9:45AM

Don Y. Park, MD

The Marriage of dualPortal + dualX TLIF: Amplify dualLIF

9:45AM - 9:50AM

Karl Klassen, Esq.

Importance of Intellectual Property and Surgical Technologies

9:50AM - 10:15AM

Break - Exhibition Viewing

CADAVER WORKSHOP

Location: Surgical Science Laboratory, Basement Floor

10:15AM - 12:30PM

Lab Session 1

dualLIF® (dualPortal® TLIF) Demonstration

Station 1

Lead: Don Y. Park, MD - SYMPOSIUM CHAIR

Station 2

Lead: Brian Kwon, MD

Assist: Man Kyu Park, MD

Station 4

Lead: Dong Hwa Heo, MD

Assist: Nima Salari, MD

Station 3

Lead: Cheol Woong Park, MD

Assist: James Mok, MD

Station 5

Lead: Nam Lee, MD

Assist: Jamie Gottlieb, MD

12:30PM - 12:45PM

Break - Exhibition Viewing

LUNCH: Courtyard, 1st Floor
PRESENTATIONS: CH13-105, 1st Floor

12:45PM - 1:30PM

Lunch - Presentations

Courtyard - CH13-105, 1st Floor

12:45PM - 12:55PM

Nam Lee, MD

dualPortal Endoscopic Spine Surgery –
Posterior Cervical Foraminotomy

12:55PM - 1:05PM

Man Kyu Park, MD

dualPortal Endoscopic Spine Surgery –
Lumbar Central and Foraminal Stenosis

1:05PM - 1:15PM

MiRus™ Technology Presentation

Discussion led by James Mok, MD

1:15PM - 1:30PM

Don Y. Park, MD - SYMPOSIUM CHAIR

dualPortal® Endoscopic Spine Surgery Case Reviews

CADAVER WORKSHOP (CONT.)

Location: Surgical Science Laboratory, Basement Floor

1:30PM - 3:45PM

Lab Session 2

dualLIF® (dualPortal® TLIF), Hands-On

3:45PM - 4:00PM

Break - Exhibition Viewing

4:00PM - 6:00PM

Lab Session 3

Additional dualLIF® (dualPortal® TLIF), Hands-On

CADAVER WORKSHOP

Location: Surgical Science Laboratory, Basement Floor

Lab Station 1



SYMPOSIUM CHAIR

Dr. Don Y. Park

Los Angeles, CA

UCLA HEALTH
LEAD

Lab Station 2



Dr. Brian Kwon

Boston, MA

LEAD



Dr. Man Kyu Park

Busan, South Korea

ASST

Lab Station 3



Dr. Cheol Woong Park

Daejeon, South Korea

LEAD



Dr. James Mok

Chicago, IL

ASST

Lab Station 4



Dr. Dong Hwa Heo

Seoul, South Korea

LEAD



Dr. Nima Salari

Phoenix, AZ

ASST

Lab Station 5



Dr. Nam Lee

Busan, South Korea

LEAD



Dr. Jamie Gottlieb

Dallas, TX

ASST



Clinical Study

Biportal endoscopic versus microscopic discectomy for lumbar herniated disc: a randomized controlled trial

Sang-Min Park, MD^a, Ho-Jin Lee, MD, PhD^b, Hyun-Jin Park, MD, PhD^c,
Jun-Young Choi, MD^a, Ohsang Kwon, MD^a, Sanghoon Lee, MD^a,
Ho-Joong Kim, MD, PhD^{a,*}, Jin S. Yeom, MD, PhD^a

^a Spine Center and Department of Orthopedic Surgery, Seoul National University College of Medicine and Seoul National University Bundang Hospital, Seongnam, Korea

^b Department of Orthopaedic Surgery, Chungnam National University School of Medicine, Daejeon, Korea

^c Department of Orthopedic Surgery, Spine Center, Kangnam Sacred Heart Hospital, Hallym University College of Medicine, Seoul, Korea

Received 12 June 2022; revised 11 August 2022; accepted 13 September 2022

Abstract

BACKGROUND CONTEXT: Biportal endoscopic discectomy has been frequently performed in recent years and has shown acceptable clinical outcomes. However, evidence regarding its efficacy and safety remains limited.

PURPOSE: This study aimed to compare the clinical efficacy and safety of biportal endoscopic with that of open microscopic discectomy in patients with single-level herniated lumbar discs.

STUDY DESIGN: Prospective, randomized, multicenter, open-label, assessor-blind, non-inferiority controlled trial.

PATIENT SAMPLE: Sixty-four participants suffering from low back and leg pain with a single-level herniated lumbar disc and required discectomy.

OUTCOME MEASURES: Outcomes were assessed with the use of patient-reported outcome measures (PROMs), visual analog scale (VAS) pain score for surgical site, low back and lower extremity, Oswestry Disability Index (ODI) for lumbar disabilities, European Quality of Life-5 Dimensions value for quality of life, and painDETECT for neuropathic pain. Surgery-related outcomes such as hospital stay, operation time, and opioid usage were collected. Adverse events occurring during the follow-up period were also noted.

METHODS: All participants were randomly assigned in a 1:1 ratio to undergo biportal endoscopic (biportal group) or microscopic discectomy (microscopy group). The primary outcome was the difference in ODI scores at 12-months post surgically based on a modified intention-to-treat strategy, with a non-inferiority margin of 12.8 points. The secondary outcomes included PROMs, surgery-related outcomes, and adverse events.

RESULTS: The ODI score at the 12-month follow-up was 11.97 in the microscopy group and 13.89 in the biportal group (mean difference, 1.92; 95% confidence interval [CI], -3.50 to 7.34), showing the non-inferiority of biportal group. The results for the secondary outcomes were similar to those for the primary outcome. Creatinine phosphokinase ratios were low in the biportal group. Early surgical site pain was slightly lower in the biportal group (mean difference of VAS pain score at 48-hr, -0.98; 95% CI, -1.77 to -0.19). Adverse events including reoperation showed no significant difference between the groups.

FDA device/drug status: Not applicable.

Author disclosures: **S-MP:** Nothing to disclose. **H-JL:** Nothing to disclose. **H-JP:** Nothing to disclose. **J-YC:** Nothing to disclose. **OK:** Nothing to disclose. **SL:** Nothing to disclose. **H-JK:** Nothing to disclose. **JSY:** Nothing to disclose.

*Corresponding author. Spine Center and Department of Orthopedic Surgery, Seoul National University College of Medicine and Seoul National University Bundang Hospital, 82, Gumi-ro 173 Beon-gil, Bundang-gu, Seongnam-si, Gyeonggi-do 13620, Republic of Korea. Tel.: +82-31-787-7202; fax: +82-31-787-4056.

Sang-Min Park and Ho-Jin Lee equally contributed to this work.

E-mail address: oshjkim@gmail.com (H.-J. Kim).

Abbreviations: MRI, Magnetic resonance imaging; VAS, Visual analog scale; eCRF, Electronic case report form; PCA, Patient-controlled analgesia; ODI, Oswestry Disability Index; PRO, Patient-reported outcome; EQ-5D, European Quality of Life-5 Dimensions; QOL, Quality of life; CPK, Creatinine phosphokinase; CT, Computed tomography; mITT, Modified intention-to-treat; PP, Per-protocol; CI, Confidence interval; MCID, Minimal clinically important difference

CONCLUSION: Biportal endoscopic discectomy was non-inferior to microscopic discectomy over a 12 month period. Biportal endoscopic discectomy is suggested to be a relatively safe and effective surgical technique with the slight advantage of reduced muscle damage. However, the clinical implications of surgical site pain should be carefully considered. © 2022 Elsevier Inc. All rights reserved.

Keywords: Biportal endoscopic spinal surgery; Degenerative spine; Discectomy; Lumbar herniated disc; Microscopy; Oswestry disability index

Introduction

Lumbar disc herniation is one of the most common causes of pain in the lower back and extremities. While most treatments for lumbar disc herniation are conservative, surgery may be required for treatment-resistant cases [1]. Generally considered surgical treatments include open, microscopic, and endoscopic discectomies [2].

Conventional open spine surgery such as laminectomy and discectomy can damage normal spinal structures such as the paraspinal muscles, bone, and ligaments [3,4]. Minimally invasive techniques for lumbar disc herniation not only provide favorable outcomes similar to those of invasive surgery, but also reduce soft tissue injury and blood loss while accelerating recovery [4]. Among the minimally invasive surgical options, biportal endoscopy has been increasing in its use recently [5–9]. Biportal endoscopic surgery can be performed on the left or right side of the spine using two small separate portals. As the camera and instrument are nested within the sheath of a uniportal endoscope, mobility of the camera and instrument is restricted. Biportal endoscopic surgery passes solely through the skin portal and does not require a separate sheath. Thus, it has a wider range of motion compared to uniportal endoscopic surgery owing to the freedom of movement in the working portal (Fig. 1). In addition, surgeons may perform highly precise procedures in a magnified and clean surgical field with an endoscope equipped with a high-definition camera and continuous saline irrigation. With

these advantages, several types of endoscopic surgeries can be performed, including discectomy, foraminotomy, laminectomy, and interbody fusion, as compared to uniportal endoscopy [7,10–15]. In previous retrospective studies, the clinical outcomes of lumbar discectomy with biportal endoscopy were similar to those of open microscopic surgery [16,17]. However, additional high-quality studies are required. Thus, we herein investigated whether biportal endoscopic discectomy was non-inferior to open microscopic discectomy in patients with single-level herniated lumbar discs.

Materials and methods

Trial design

This trial (registered as NCT03924700 on ClinicalTrials.gov) was an investigator-initiated, prospective, randomized, multicenter, open-label, parallel-group, non-inferiority trial. Written informed consent was obtained from each patient or their legal representative before enrollment. This trial was conducted in accordance with the Declaration of Helsinki, and its clinical data were monitored by an independent researcher. The participants were recruited from April 2019 to November 2020.

Trial population

Sixty-four participants with single-level herniated lumbar discs and radicular radiating pain in the lower extremities

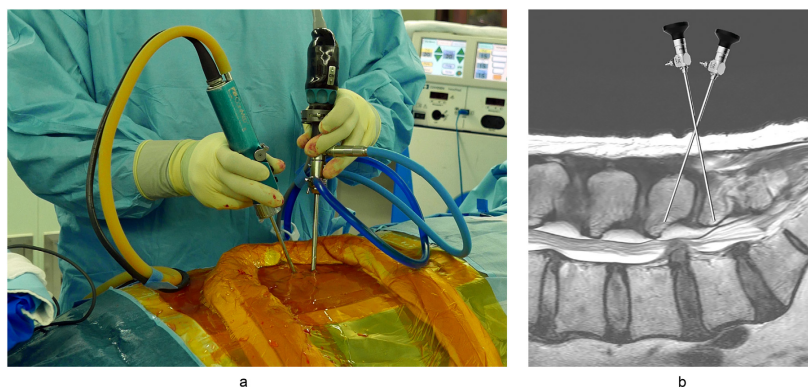


Fig. 1. (A) Photo of the operative field showing a biportal endoscopic discectomy by a right-handed surgeon on left side. (B) Biportal endoscopy can be performed with fewer restriction and has wider range of motion.

were recruited across two tertiary institutions. Participants aged 20–80 years were required to have radiographic evidence of a single-level herniated lumbar disc on magnetic resonance imaging (MRI), without any improvements after proper conservative treatment (more than 6 weeks medication treatment with at least two administrations of nerve block), and with lumbar radiculopathy (visual analog scale [VAS] pain score >4) for inclusion in the study. Exclusion criteria were as follows: spondylolisthesis with Meyerding grade 2 on lateral simple radiograph; lumbar instability (motion of >3 mm at the surgical level, as measured on flexion-extension radiographs of the lumbar spine); previous lumbar spinal surgery at the same level; degenerative lumbar scoliosis (Cobb angle $>20^\circ$); history of spine tumor, fracture, or spondylitis in the lumbar spine; history of psychological disorders or currently receiving mental health treatment (eg, dementia, anxiety disorder, or depression); and other difficulties that would have prevented trial participation.

Randomization, blinding, and follow-ups

All participants were randomized into biportal endoscopic (biportal) and microscopic (microscopy) discectomy groups by a clinical researcher who was not involved in this trial prior to enrollment, with a computer-generated randomized list with a block size of four. The list of randomizations was integrated into a web-based eCRF platform accessible by approved researchers and used to conceal assignments. The allocation was concealed and presented to the surgeons immediately preceding surgery. Two orthopedic spine surgeons, each with 6–10 years of spine surgery experience, performed the operations at tertiary institutions. Given the nature of the trial, both surgeons and participants knew which operation they underwent. Therefore, only the assessor and data analysts were blinded.

Upon surgery, all participants completed preoperative questionnaires for their demographic characteristics, medical history, and patient-reported outcome instruments. All participants were followed up at 2 weeks, 3 months, 6 months, and 1 year following surgery. An independent researcher collected the participants' clinical and radiographic outcomes during follow-up. Patients who were unable to attend in-person follow-ups were evaluated by telephone.

Interventions

Microscopic discectomy

Microscopic discectomy was performed as previously described [17,18]. Briefly, the operation level was examined using C-arm and a 3-to-4-cm midline incision was made. Thereafter, the paraspinal muscle was dissected from the bone. A laminotomy was made on the lamina, and the ligamentum flavum around the disc was removed. After the location of the dura and root was confirmed, the root was retracted to identify the location of the herniated disc. After the removal of the herniated disc material, the remaining

disc section was examined, and the operation was completed.

Biportal endoscopic discectomy

Biportal endoscopic discectomy has been described in previous studies [7,17,19]. The incision location for two portals began approximately lateral to the spinous process. The working portal was first made on the interlaminar space, and the viewing portal was made 1 cm proximal to the working portal with a 7-mm incision on the left side (for right-handed individuals). Subsequently, a narrow Cobb elevator was placed through the working portal. The paraspinal muscles were then separated from the bone to create a working space. A thirty-degree endoscope was inserted through the viewing portal with saline irrigation at a pressure of 40 mmHg. The operation was performed through the working portal using conventional spinal instruments, with the exception of bipolar radiofrequency electrocautery. Thereafter, the surgery was performed similarly to microscopic discectomy.

Postoperative pain control

Pain at the surgical site was controlled using an intravenous patient-controlled analgesia system (PCA, AceMedical, Seoul, Korea). The PCA mode in this trial was a continuous infusion at 1 mL/hour with 1 mL patient-controlled bolus and a 15-minute lock out (25 μ g/kg fentanyl in 100 mL PCA volume). If pain was not controlled, only additional fentanyl injections were used at the patient's request (VAS pain score at the surgical site >8). No other pain relievers were used during the first 48-hours following surgery. After this period, pelubipofen was administered twice daily for 2 weeks instead of PCA.

Measurements and outcomes

Participant characteristics were collected. Prior to randomization, each participant was assessed preoperatively to obtain demographic information and past medical history using the Charlson Comorbidity Index and the American Society of Anesthesiologists physical status classification.

Primary outcome

The primary outcome was the Oswestry Disability Index (ODI), version 2.0, score [20] at 12 months following surgery between the control and intervention groups. The ODI score is a patient-reported outcome (PRO) questionnaire for lumbar disease commonly used in hospital settings. This 10-section questionnaire evaluates various activities of daily life. Each section is scored on a scale of 0–5, with a score of five representing the greatest disability. ODI is expressed as the percentage of the combined score from all sections out of the total possible score. Therefore, for unanswered questions, the total possible score was reduced by five. If the patient marked more than one statement in a question, the statement with the highest score was recorded as an indication of the actual disability.

Secondary outcomes

The secondary outcomes of this trial were PROs, clinical and radiographic outcomes, and adverse events. The PROs included the VAS pain score for low back pain, lower-extremity radiating pain, surgical site pain, ODI, European Quality of Life-5 Dimensions (EQ-5D) score, and painDETECT score for neuropathic pain. The VAS pain score contained a 10-cm line with “none” (0) on one end of the scale and “absolute maximum pain” (10) on the other end. The EQ-5D, which measures quality of life (QOL), contains five questionnaires with five responses [21]. The total score is converted into an EQ-5D value ranging from -0.066 to 1.000 with a score of one indicating the best QOL. The painDETECT, which measures neuropathic pain in the lower extremities, contains nine questions with a final score ranging from -1 to 38 points. A total score under 12 points indicates that neuropathic pain is unlikely to be present, while a score over 19 indicates that the likelihood of neuropathic pain is high (>90%) [22]. To evaluate clinical outcomes during follow-up, we analyzed serial changes in the VAS pain score for the lower back and lower extremities, ODI scores, EQ-5D value, and painDETECT preoperatively and postoperatively until the final follow-up. To analyze postoperative surgical site pain, we measured the VAS pain scores at 4, 8, 16, 24, and 48 hours and 2 weeks after surgery.

Surgery-related outcomes such as total postoperative drainage (mL), operation duration (minutes), postoperative hospital stay (days), serum creatine phosphokinase (CPK) ratio, [23] and total fentanyl usage, were analyzed. Total postoperative drainage was defined as the drainage amount that flowed into the Hemovac drain system until the second postoperative day. Operation duration was defined as the time from skin-to-skin closure, as noted in the anesthesia record. The CPK ratio was the ratio of serum CPK level at postoperative day 1 to its preoperative level. Total fentanyl usage was the fentanyl amount in intravenous PCA and additional intravenous fentanyl injection during the hospital stay.

We performed MRI or computed tomography (CT) scans on all participants immediately following surgery. If disc recurrence was suspected due to worsening pain throughout the follow-up period, MRI was repeated. Plain radiographs were taken periodically during outpatient visits. For radiographic outcomes, the degree of disc removal and facet joint injury was measured by postoperative MRI or CT. Residual disc was confirmed if extruded or migrated discs were detected on immediate postoperative MRI or CT. Facet joint injury was defined as an injury covering more than one-third of the facet joint. Other radiographic complications were measured with simple radiographs during the follow-up period.

Trial safety was analyzed by evaluating all adverse events and surgery-related outcomes. Additionally, adverse events were divided into complications during and after surgery.

Statistical analysis

The hypothesis was that the ODI of the biportal group at 12 months after surgery would not be inferior to that of the microscopy group. The non-inferiority margin was 12.8 ODI points, based on the minimal clinically important difference (MCID) in the ODI of the spine surgery [24]. Assuming a 20% 12 month dropout rate, a sample size of 64 participants (32 in each group) was calculated to provide at least 80% power for non-inferiority demonstration, with a one-sided alpha level of 0.05 using PASS 15.0 (NCSS statistical software, Kaysville, UT).

Outcomes were analyzed using the modified intention-to-treat (mITT) strategy. The mITT population consisted of all participants with randomly assigned surgery and had available data after randomization. In cases of missing data, the imputation, “last observation carried forward” or “last observation carried backwards” was used. An additional per-protocol (PP) sensitivity analysis of non-inferiority was carried out with available primary outcome data of patients, who did not undergo reoperation and were not subjected to a major protocol violation. Non-inferiority for biportal endoscopic discectomy was declared if detected in both mITT and PP analyses.

For the primary outcome, between-group differences and 95% confidence intervals (CIs) were calculated. A linear mixed model was used for all repeated-measures continuous outcomes (VAS pain scores, ODI, EQ-5D, and painDETECT scores). Time was analyzed as a categorical variable, and intervention-time interactions were included to analyze the intervention effects at each follow-up timepoint. A linear repeated-measures mixed model was also used to analyze between-group differences during the follow-up period, with the baseline and follow-up time points as categorical variables. Other secondary outcomes were analyzed using the Fisher’s exact test for categorical variables and the Student’s t-test for continuous variables. All tests were performed using Stata/MP 17.0 (StataCorp LLC, College Station, TX, USA). Two-sided p-values <0.05 were considered statistically significant.

Results

Participants’ characteristics

From April 28, 2019, to November 29, 2020, 69 participants (microscopy, n=35; biportal, n=34) from two tertiary institutions were enrolled, and 56 participants had available data at the 12 month follow-up. No crossover was observed in any randomized surgical strategies. Five patients were excluded from the mITT analysis (four due to violation of surgery randomization protocol, and one due to consent withdrawal, Fig. 2). Four patients were excluded from the PP analysis (two due to a reoperation in the microscopy group, one due to reoperation in the biportal group, and one due to a treatment history of recurrent herniated disc with interventional nerve root block). Baseline clinical

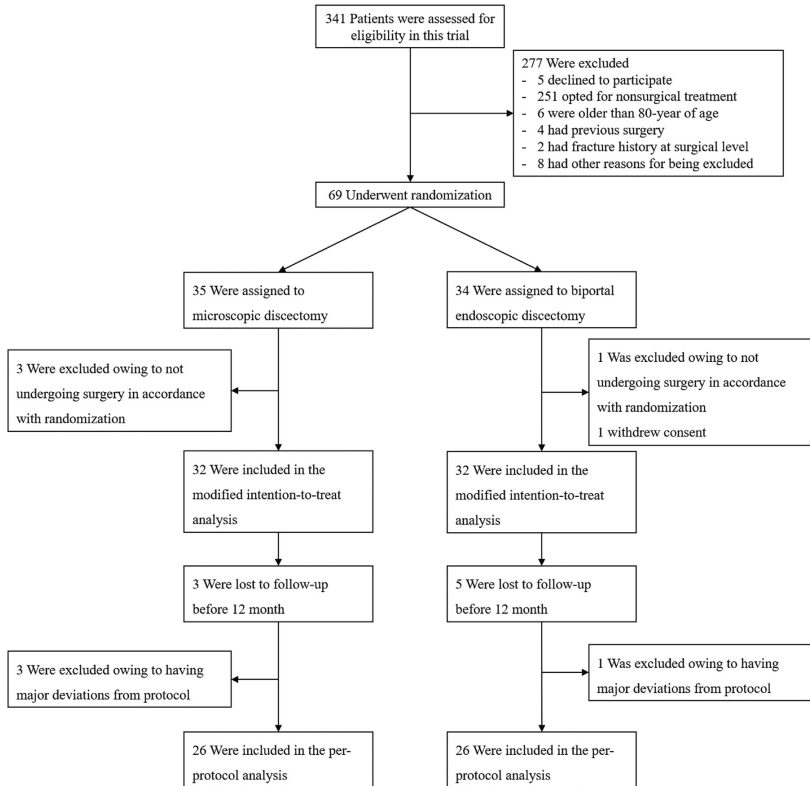


Fig. 2. Flowchart of the trial design.

characteristics of the study participants are presented in Table 1. Demographic data were similar between both groups ($p>.05$).

Primary outcome at 1 year

In the mITT population at 12 month follow-up, the mean ODI was comparable between the microscopy (11.97, 95% CI: 7.77–16.17) and biportal (13.89, 95% CI: 10.30–17.48) groups ($p=.240$). The between-group mean difference was 1.92 (95% CI: -3.50–7.34). In the PP population at 12 month follow-up, the mean ODI was not statistically different between the microscopy (9.76, 95% CI: 6.16–13.38) and biportal (12.35, 95% CI: 9.50–15.19) groups ($p=.127$). The between-group mean difference was 2.58 (95% CI: -1.91–7.06). For both analyses, the upper boundaries of the 95% CI for the between-group mean differences were within the

margin of 12.8 ODI points, confirming the non-inferiority of biportal endoscopic discectomy (Table 2).

Secondary outcomes

There were no significant interventional effects on any clinical outcomes during the 12 month follow-up period (Fig. 3). However, there were significant interventional effects on the VAS pain score for the surgical site during the 2 week follow-up period. The postoperative surgical site pain significantly improved during the 2-week period. However, in the biportal group, VAS pain scores for the surgical site were significantly lowered from 12 to 48 hours (Table 3).

Surgery-related outcomes (including total fentanyl use, operation duration, length of hospital stay, and drainage), adverse events, and recurrent herniated discs did not show

Table 1
Baseline characteristics of the included patients

Characteristic	Group I Microscopy (n=32)	Group II Biportal endoscopy (n=32)
Age (years) *	50.3 (13.5)	45.7 (12.7)
Male / Female [†]	18 / 14	14 / 18
BMI (kg/m ²) *	24.6 ± 2.9	25.6 ± 3.6
CCI score [‡]	0 (0–1)	0 (0–0)
ASA score [‡]	1 (1–2)	2 (1–2)
Smoking status, n (%) [‡]		
Non / Ex-smoker	18 (56%)	19 (59%)
Current smoker	14 (44%)	13 (41%)
Alcohol consumption, n (%) [‡]		
None	17 (53%)	18 (56%)
≥1 drink/month	15 (47%)	14 (44%)
VAS for back pain [‡]	4 (1.5–6)	4 (2.5–6)
VAS for buttock pain [‡]	7 (5.5–8)	7 (6–8)
VAS for leg pain [‡]	8 (6.5–9)	8 (7–9)
ODI*	58.3 ± 16.9	57.1 ± 17.8
EQ-5D*	0.419 ± 0.180	0.391 ± 0.167
painDETECT*	13.8 ± 7.3	11.4 ± 6.3
HIVD type, n (%) [‡]		
Extrusion	29 (97%)	30 (97%)
Sequestration	1 (3%)	1 (3%)
Migration	8 (27%)	10 (32%)
HIVD canal compromise, n (%) [‡]		
Mild (less than 1/3)	2 (7%)	1 (3%)
Moderate	17 (59%)	16 (52%)
Severe (over 2/3)	10 (34%)	14 (45%)
HIVD zone, n (%) [‡]		
Central	8 (27%)	9 (29%)
Paracentral	28 (93%)	30 (97%)
HIVD calcification, n (%) [‡]	1 (3%)	1 (3%)
Approach side, n (%) [‡]		
Right	10 (31%)	15 (47%)
Left	22 (69%)	17 (53%)
Operation level, n (%)		
L2-3	1 (3%)	0 (0%)
L3-4	6 (19%)	2 (6%)
L4-5	19 (59%)	24 (75%)
L5-S1	6 (19%)	6 (19%)

BMI, body mass index; CCI, Charlson Comorbidity Index; ASA, American Society of Anesthesiologist; VAS, visual analog scale; ODI, Oswestry disability index; EQ-5D, European Quality of Life-5 Dimensions; HIVD, herniated intervertebral disc.

* Data are presented as given as mean ± standard deviation.

[†] Data are presented as No. of patients.

[‡] Data are presented as given as median and interquartile range in parenthesis.

statistically significant differences between the two groups. The CPK ratio was lower in the biportal group. Asymptomatic hematoma and wound dehiscence were observed more frequently in the microscopy group, but without any statistically significant difference. Severe adverse events, such as thromboembolism, stroke, or surgery-related death, were not observed. Two cases of neurologic deterioration in each group were observed along with wrong site surgery in the biportal group (Table 4).

Discussion

In this trial, biportal endoscopic discectomy was non-inferior to microscopic discectomy with regard to the post-operative 12 month ODI within a margin of 12.8 points. The minimally invasive procedure of biportal endoscopy demonstrated slightly improved outcomes in postoperative surgical site pain and CPK ratio. Other secondary outcomes were generally comparable between the two study groups.

Endoscopic surgery is widely used in minimally invasive spinal surgeries. While uniportal endoscopy was first developed and remains widely used, it has a steep learning curve and a high rate of complications [25,26]. Biportal endoscopy is a surgical technique with an arthroscope similar to that used in knee or shoulder arthroscopy. This technique has a better camera system with a wider viewing field via the use of a 30° endoscope and more convenient operation that allows free movement of both hands [27,28]. However, there is a disadvantage that postoperative headaches may occur in patients due to high water pressure during surgery [11,29,30].

The results of this study are not significantly different from those of previous studies [6,7,16,17]. In previous studies, there were no significant differences in serial changes in clinical outcomes, but it has been reported that low post-operative pain, short hospital stay, low opioid use, long operation time, and high postoperative drainage were observed compared to microscopic discectomy. In our study, postoperative pain and CPK ratio were low in the biportal endoscopy group; therefore, it was thought to be slightly beneficial for pain control immediately after surgery. However, the VAS pain score difference at surgery site was approximately one. In a previous study, the MCID

Table 2
Mean Oswestry Disability Index (ODI) scores at 12 months after surgery. Data are presented using both modified intention-to-treat (mITT) and per-protocol (PP) analyses

Analysis	Number of participants	Mean ± standard deviation	95% CI	Mean difference	95% CI of difference	p-value
mITT	Microscopy (n=29)	11.97 ± 11.04	7.77–16.17	1.92	–3.50 to 7.34	0.240
	Biportal endoscopy (n=27)	13.89 ± 9.25	10.30–17.48			
PP	Microscopy (n=26)	9.76 ± 8.94	6.16–13.38	2.58	–1.91 to 7.06	0.127
	Biportal endoscopy (n=26)	12.35 ± 7.05	9.50–15.19			

mITT, modified intention-to-treat; PP, per protocol; CI, confidence interval.

Data are presented as given as mean ± standard deviation.

24

S.-M. Park et al. / The Spine Journal 23 (2023) 18–26

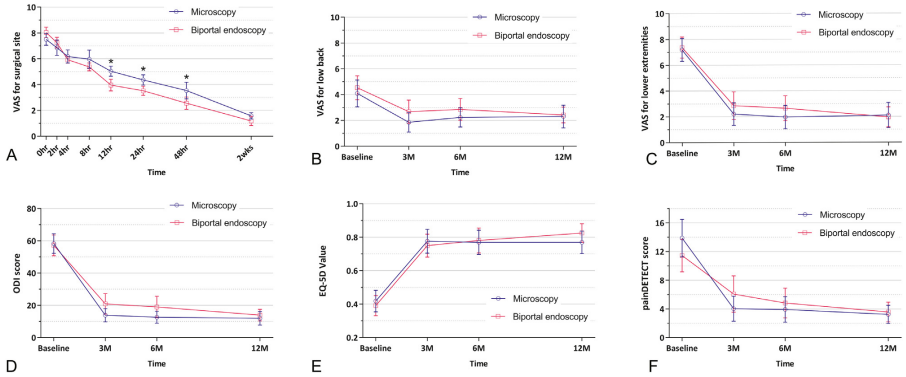


Fig. 3. Changes in secondary outcomes between the two interventions. Changes in mean VAS scores for surgical site (A), low back pain (B), lower extremities (C), mean ODI score (D), mean EQ-5D value (E), mean painDETECT score (F). *Statistical significance between the two groups on linear mixed-effect model. Error bars indicate 95% CI. EQ-5D, European Quality of Life-5 Dimensions; ODI, Oswestry disability index; VAS, visual analog scale.

Table 3
Secondary clinical outcomes during follow-up period (Modified intention-to-treat population)

Variables	Microscopy	Biptoral endoscopy	Mean difference (95% CI)	p-value
VAS pain score for surgical site				
Immediate	7.50 ± 1.17	8.04 ± 0.98	0.54 (−0.06 to 1.14)	0.088
2 hours	6.86 ± 1.53	7.24 ± 1.01	0.38 (−0.34 to 1.11)	0.227
4 hours	6.18 ± 1.31	5.92 ± 0.64	−0.26 (−0.84 to 0.32)	0.415
8 hours	5.96 ± 1.82	5.36 ± 0.76	−0.60 (−1.39 to 0.18)	0.057
12 hours	5.04 ± 1.00	3.96 ± 1.10	−1.08 (−1.65 to −0.50)	0.001
24 hours	4.36 ± 1.03	3.52 ± 0.87	−0.84 (−1.37 to −0.31)	0.008
48 hours	3.54 ± 1.61	2.56 ± 1.16	−0.98 (−1.77 to −0.19)	0.004
2 weeks	1.58 ± 0.51	1.18 ± 0.80	−0.40 (−0.83 to 0.03)	0.451
Overall intervention effect*	NA	NA	NA	< 0.001
VAS pain score for lower back				
3 months	1.86 ± 2.00	2.68 ± 2.33	0.82 (−0.33 to 1.97)	0.115
6 months	2.24 ± 1.96	2.86 ± 2.17	0.62 (−0.48 to 1.71)	0.214
12 months	2.31 ± 2.32	2.43 ± 1.57	0.12 (−0.94 to 1.17)	0.679
Overall intervention effect*	NA	NA	NA	0.720
VAS pain score for lower extremities				
3 months	2.21 ± 2.29	2.86 ± 2.74	0.65 (−0.69 to 1.99)	0.237
6 months	1.97 ± 2.38	2.50 ± 2.41	−0.53 (−0.74 to 1.81)	0.317
12 months	2.10 ± 2.57	1.96 ± 1.99	−0.14 (−1.36 to 1.08)	0.946
Overall intervention effect*	NA	NA	NA	0.687
ODI score				
3 months	13.83 ± 10.72	20.89 ± 16.49	7.07 (−0.29 to 14.42)	0.051
6 months	12.66 ± 9.83	19.00 ± 17.09	6.34 (−1.02 to 13.71)	0.079
12 months	11.97 ± 11.04	13.89 ± 9.25	1.92 (−3.50 to 7.34)	0.567
Overall intervention effect*	NA	NA	NA	0.143
EQ-5D value				
3 months	0.776 ± 0.187	0.749 ± 0.177	−0.026 (−0.123 to 0.704)	0.524
6 months	0.769 ± 0.191	0.780 ± 0.192	0.011 (−0.090 to 0.113)	0.866
12 months	0.769 ± 0.178	0.825 ± 0.143	0.056 (−0.030 to 0.142)	0.260
Overall intervention effect*	NA	NA	NA	0.393
painDETECT score				
3 months	4.03 ± 4.57	6.07 ± 6.53	2.04 (−0.95 to 5.02)	0.058
6 months	3.93 ± 4.69	4.82 ± 5.36	0.89 (−1.78 to 3.56)	0.271
12 months	3.24 ± 3.31	3.57 ± 3.54	0.33 (−1.49 to 2.15)	0.476
Overall intervention effect*	NA	NA	NA	0.078

VAS, visual analog scale; NA, not available; ODI, Oswestry disability index; EQ-5D, European Quality of Life-5 Dimensions

Data are presented as given as mean ± standard deviation, unless otherwise indicated.

* P-value is from linear mixed models for repeated measures comparing between interventions during 12-month follow-up period.

Table 4

Additional secondary outcomes (Modified intention-to-treat population)

Characteristic	Group I Microscopy (n=32)	Group II Biportal endoscopy (n=32)	p-value
Total fentanyl usage (μg)	532.6 \pm 495.4	565.7 \pm 585.2	0.767
Operative time (min)	62.0 \pm 20.8	63.9 \pm 16.1	0.349
Length of hospital stay (days)	4.6 \pm 1.4	4.7 \pm 2.4	0.839
Drainage	33.2 \pm 39.8	44.7 \pm 36.0	0.092
CPK ratio*	2.03 \pm 0.53	1.51 \pm 1.05	0.016
Complications during surgery†			
Incidental durotomy	2 (6.3%)	0 (0%)	0.492
Facet injury	1 (3.1%)	5 (15.6%)	0.195
Wrong site surgery	0 (0%)	1 (3.1%)	1.000
Remnant disc (Incomplete discectomy) ‡	7 (21.9%)	4 (12.5%)	0.320
Neurologic deterioration	0 (0%)	0 (0%)	1.000
Complications during follow-up§			
Hematoma resulting in reoperation	0 (0%)	0 (0%)	1.000
Asymptomatic hematoma	14 (43.8%)	7 (21.9%)	0.055
Wound dehiscence	5 (15.6%)	0 (0%)	0.053
Surgical site infection	1 (3.1%)	0 (0%)	1.000
Recurrent disc herniation resulting in reoperation	1 (3.1%)	1 (3.1%)	1.000
Recurrent disc herniation not required reoperation	3 (9.4%)	6 (18.8%)	0.474
Neurologic deterioration	1 (3.1%)	1 (3.1%)	1.000

Continuous data are presented as given as mean \pm standard deviation. Categorical data are presented as No. of patients.

CPK, creatine phosphokinase

* CPK ratio = postoperative day 1 CPK/preoperative CPK

† Complications that occurred during surgery that were confirmed during or immediately after surgery

‡ Remnant disc refers to a state in which all of the existing discs have not been removed on postoperative MRI.

§ Complications identified until the final follow-up after surgery.

value for lower back pain was approximately 1.2 [24]. A VAS pain score of less than one was not clinically meaningful; therefore, although there was a difference in pain at the surgical site in this study, the clinical significance should be carefully considered.

However, unlike the results of previous studies, in our trial the postoperative hospital stay was not shorter, opioid use was not lower, and the operation times were similar. Adverse events did not differ between the two groups. There were seven and five patients with asymptomatic hematoma and wound dehiscence in the open microscopic discectomy group, respectively; however, the difference was marginally better in biportal endoscopy, but not statistically significant. Facet joint injuries and wrong site surgery occurred more frequently in the biportal group, which is likely to be the result of an orientation error caused by the use of a 30-degree endoscope, but there was no statistical difference shown.

To our knowledge, this study was the first randomized controlled trial to examine the outcomes of biportal endoscopic vs those of microscopic discectomy at 12 months after surgery. Biportal endoscopic discectomy is suggested to be a relatively safe and effective surgical technique with slight advantages of reduced surgical site pain and muscle damage. However, this study has several limitations. First, this was an open-label clinical trial, in which blinding was only conducted for the outcome assessors and data analysts. Second, due to the absence of an evidence-based non-inferiority margin, a MCID value of 12.8 ODI points was

empirically chosen. Given the exclusion criteria, we conducted both mITT and PP analyses to reduce selection bias. Third, generalized conclusions could not be drawn due to the small sample size. However, given a compliance of over 88% and an assumed dropout rate of 20%, our results may have had a better statistical power than expected. Fourth, a 12-month follow-up period may be insufficient to determine the surgical outcomes. However, since 12-month outcomes were shown to accurately reflect those at 24 months, our results may offer clinical significance [31]. Finally, since multiple comparisons in the secondary outcome analysis increased the risk of type I error, the interpretation of these results must include these potential limitations.

In conclusion, biportal endoscopic discectomy was non-inferior to microscopic discectomy at 12-month follow-up in this study. No differences in the clinical and radiographic outcomes and adverse events between the two interventions were observed, with slightly less surgical site pain and muscle damage in the biportal group. Therefore, for patients with herniated lumbar discs, biportal endoscopic discectomy is suggested to be a relatively safe and effective surgical option.

Declarations of competing interests

The authors declare that they have no known competing financial interests or personal relationships that could have appeared to influence the work reported in this paper.

Acknowledgments

This study was supported by a Korea Health Technology R&D Project grant (HC20C0163) through the Korea Health Industry Development Institute (KHIDI), funded by the Ministry of Health & Welfare, Republic of Korea, and grants from Daewon Pharmaceutical Corporation in Seoul, Republic of Korea.

References

- [1] Rickers KW, Pedersen PH, Tvedebrink T, Eiskjær SP. Comparison of interventions for lumbar disc herniation: a systematic review with network meta-analysis. *Spine J* 2021;21:1750–62.
- [2] Ahn Y. A historical review of endoscopic spinal discectomy. *World Neurosurg* 2021;145:591–6.
- [3] Mobbs RJ, Li J, Sivabalan P, Raley D, Rao PJ. Outcomes after decompressive laminectomy for lumbar spinal stenosis: comparison between minimally invasive unilateral laminectomy for bilateral decompression and open laminectomy: clinical article. *J Neurosurg Spine* 2014;21:179–86.
- [4] Park J, Ham DW, Kwon BT, Park SM, Kim HJ, Yeom JS. Minimally invasive spine surgery: techniques, technologies, and indications. *Asian Spine J* 2020;14:694–701.
- [5] Park SM, Kim HJ, Kim GU, Choi MH, Chang BS, Lee CK, et al. Learning curve for lumbar decompressive laminectomy in biportal endoscopic spinal surgery using the cumulative summation test for learning curve. *World Neurosurg* 2019;122:e1007–13.
- [6] Park SM, Kim GU, Kim HJ, Choi JH, Chang BS, Lee CK, et al. Is the use of a unilateral biportal endoscopic approach associated with rapid recovery after lumbar decompressive laminectomy? A preliminary analysis of a prospective randomized controlled trial. *World Neurosurg* 2019;128:e709–18.
- [7] Park SM, Park J, Jang HS, Heo YW, Han H, Kim HJ, et al. Biportal endoscopic versus microscopic lumbar decompressive laminectomy in patients with spinal stenosis: a randomized controlled trial. *Spine J* 2020;20:156–65.
- [8] Kim HS, Choi SH, Shim DM, Lee IS, Oh YK, Woo YH. Advantages of new endoscopic unilateral laminectomy for bilateral decompression (ULBD) over conventional microscopic ULBD. *Clin Orthop Surg* 2020;12:330–6.
- [9] Nakamura S, Taguchi M. Use of an internal retractor for percutaneous full-endoscopic resection in cervical intervertebral disc herniation with a posterior approach. *Asian Spine J* 2020;14:489–94.
- [10] Kang T, Park SY, Park GW, Lee SH, Park JH, Suh SW. Biportal endoscopic discectomy for high-grade migrated lumbar disc herniation. *J Neurosurg Spine* 2020;1–6.
- [11] Kang MS, Park HJ, Hwang JH, Kim JE, Choi DJ, Chung HJ. Safety evaluation of biportal endoscopic lumbar discectomy: assessment of cervical epidural pressure during surgery. *Spine (Phila Pa 1976)* 2020;45:E1349–56.
- [12] Kang MS, Hwang JH, Choi DJ, Chung HJ, Lee JH, Kim HN, et al. Clinical outcome of biportal endoscopic resectional lumbar discectomy for recurrent lumbar disc herniation. *J Orthop Surg Res* 2020;15:557.
- [13] Kim JS, Park CW, Yeung YK, Suen TK, Jun SG, Park JH. Unilateral Biportal endoscopic decompression via the contralateral approach in asymmetric spinal stenosis: a technical note. *Asian Spine J* 2021;15:688–700.
- [14] Yeung YK, Park CW, Jun SG, Park JH, Tse AC. Comparative cohort study for expansion of lateral recess and facet joint injury after biportal endoscopic ipsilateral decompression and contralateral decompression. *Asian Spine J* 2022;16:560–6.
- [15] Kang MS, You KH, Choi JY, Heo DH, Chung HJ, Park HJ. Minimally invasive transforaminal lumbar interbody fusion using the biportal endoscopic techniques versus microscopic tubular technique. *Spine J* 2021;21:2066–77.
- [16] Kim SK, Kang SS, Hong YH, Park SW, Lee SC. Clinical comparison of unilateral biportal endoscopic technique versus open microdiscectomy for single-level lumbar discectomy: a multicenter, retrospective analysis. *J Orthop Surg Res* 2018;13:22.
- [17] Choi KC, Shim HK, Hwang JS, Shin SH, Lee DC, Jung HH, et al. Comparison of surgical invasiveness between microdiscectomy and 3 different endoscopic discectomy techniques for lumbar disc herniation. *World Neurosurg* 2018;116:e750–8.
- [18] Sharma A, Singh V, Agrawal R, Mangale N, Deepak P, Savla J, et al. Conjoint nerve root an intraoperative challenge in minimally invasive tubular discectomy. *Asian Spine J* 2021;15:545–9.
- [19] Heo DH, Lee N, Park CW, Kim HS, Chung HJ. Endoscopic unilateral laminotomy with bilateral discectomy using biportal endoscopic approach: technical report and preliminary clinical results. *World Neurosurg* 2020;137:31–7.
- [20] Fairbank JC, Pynsent PB. The Oswestry disability index. *Spine (Phila Pa 1976)* 2000;25:2940–52. discussion 52.
- [21] Herdman M, Gudex C, Lloyd A, Janssen M, Kind P, Parkin D, et al. Development and preliminary testing of the new five-level version of EQ-5D (EQ-5D-5L). *Qual Life Res* 2011;20:1727–36.
- [22] Freynhagen R, Baron R, Gockel U, Tolle TR. painDETECT: a new screening questionnaire to identify neuropathic components in patients with back pain. *Curr Med Res Opin* 2006;22:1911–20.
- [23] Arts MP, Nieborg A, Brand R, Peul WC. Serum creatine phosphokinase as an indicator of muscle injury after various spinal and nonsurgical procedures. *J Neurosurg Spine* 2007;7:282–6.
- [24] Copay AG, Glassman SD, Subach BR, Berven S, Schuler TC, Carreon LY. Minimum clinically important difference in lumbar spine surgery patients: a choice of methods using the Oswestry Disability Index, Medical Outcomes Study questionnaire Short Form 36, and pain scales. *Spine J* 2008;8:968–74.
- [25] Pan M, Li Q, Li S, Mao H, Meng B, Zhou F, et al. Percutaneous Endoscopic Lumbar Discectomy: Indications and Complications. *Pain Physician* 2020;23:49–56.
- [26] Ahn SS, Kim SH, Kim DW. Learning Curve of Percutaneous Endoscopic Lumbar Discectomy Based on the Period (Early vs. Late) and Technique (in-and-out vs. in-and-out-and-in): A Retrospective Comparative Study. *J Korean Neurosurg Soc* 2015;58:539–46.
- [27] Kim JE, Choi DJ, Park EJJ, Lee HJ, Hwang JH, Kim MC, et al. Biportal Endoscopic Spinal Surgery for Lumbar Spinal Stenosis. *Asian Spine J* 2019;13:334–42.
- [28] Choi DJ, Kim JE. Efficacy of biportal endoscopic spine surgery for lumbar spinal stenosis. *Clin Orthop Surg* 2019;11:82–8.
- [29] Choi DJ, Choi CM, Jung JT, Lee SJ, Kim YS. Learning curve associated with complications in biportal endoscopic spinal surgery: challenges and strategies. *Asian Spine J* 2016;10:624–9.
- [30] Lee KH, Kim GL, Park J, Lee HB, Hong SY, Kim TH. Retinal hemorrhage and transient consciousness disturbance after biportal endoscopic lumbar discectomy: A case report and literature review. *J Orthop Sci* 2021. in press.
- [31] Staartjes VE, Siccoli A, de Wispelaere MP, Schröder ML. Patient-reported outcomes unbiased by length of follow-up after lumbar degenerative spine surgery: Do we need 2 years of follow-up? *Spine J* 2019;19:637–44.



The Spine Journal 20 (2020) 156–165

THE
SPINE
JOURNAL

Clinical Study

Biportal endoscopic versus microscopic lumbar decompressive laminectomy in patients with spinal stenosis: a randomized controlled trial

Sang-Min Park, MD^{a,1}, Jiwon Park, MD^{a,1}, Ho Su Jang, MD^a,
Young Woo Heo, MD^a, Heesoo Han, MD^a, Ho-Joong Kim, MD^a,
Bong-Soon Chang, MD^b, Choon-Ki Lee, MD^b, Jin S. Yeom, MD, PhD^{a,*}

^a Spine Center and Department of Orthopaedic Surgery, Seoul National University College of Medicine and Seoul National University Bundang Hospital, Seongnam, Republic of Korea

^b Department of Orthopaedic Surgery, Seoul National University College of Medicine and Seoul National University Hospital, Seoul, Republic of Korea

Received 10 July 2019; revised 13 September 2019; accepted 16 September 2019

Abstract

BACKGROUND CONTEXT: Biportal endoscopic decompressive laminectomy is a widely performed procedure and shows acceptable clinical outcomes. However, the evidence regarding the advantages of biportal endoscopic surgery is weak, a randomized controlled trial is therefore warranted.

PURPOSE: To compare the clinical efficacies of biportal endoscopic and microscopic decompressive laminectomy in patients with lumbar spinal stenosis.

STUDY DESIGN: Randomized controlled trial.

PATIENT SAMPLE: Sixty-four participants suffering from low back and leg pain with single-level lumbar spinal stenosis who required decompressive laminectomy.

OUTCOME MEASURES: Outcomes were assessed with the use of patient-reported outcome measures, visual analog scale (VAS) score for low back and lower extremity radiating pain, Oswestry disability index (ODI), European Quality of Life-5 Dimensions (EQ-5D) score, and painDETECT for neuropathic pain. Surgery-related outcomes including operation time, length of hospital stay, postoperative drainage, and serum creatine phosphokinase were evaluated. Perioperative (<30 days) and late (1–12 months) complications were also noted.

METHODS: All participants were randomly assigned in a 1:1 ratio to undergo biportal endoscopic or microscopic decompressive laminectomy. The primary outcome was the ODI score at 12 months after surgery based on a modified intention-to-treat strategy. The secondary outcomes included VAS score for low back and lower extremity radiating pain, ODI scores, EQ-5D score, and painDETECT score. There were no sources of funding and no conflicts of interest associated with this study.

RESULTS: There was no significant difference between groups in the mean ODI score at 12 months after surgery (30 in the microscopy vs. 29 in the biportal endoscopy group, $p=.635$). There were also no significant differences in low back and lower extremity pain VAS scores, ODI, EQ-5D scores, and painDETECT scores at the 3-, 6-, or 12-month follow-up. Operation time, length of hospital stay, serum creatine phosphokinase, and perioperative complications, such as durotomies and symptomatic hematoma, showed no significant differences between the groups; however, one participant underwent additional revision surgery 9 months after the index surgery in the microscopy group.

FDA device/drug status: Not applicable.

Author disclosures: **S-MP:** Nothing to disclose. **JP:** Nothing to disclose. **HSJ:** Nothing to disclose. **YWH:** Nothing to disclose. **HH:** Nothing to disclose. **H-JK:** Nothing to disclose. **B-SC:** Nothing to disclose. **C-KL:** Nothing to disclose. **JSY:** Nothing to disclose.

*Corresponding author. Spine Center and Department of Orthopaedic Surgery, Seoul National University College of Medicine and Seoul

National University Bundang Hospital, 82, Gumi-ro 173 Beon-gil, Bundang-gu, Seongnam-si, Gyeonggi-do 13620, Republic of Korea. Tel.: +82317877195; fax: +82317874056

E-mail address: highcervical@gmail.com (J.S. Yeom).

¹ Sang-Min Park and Jiwon Park equally contributed to this work.

CONCLUSIONS: Despite the study design limitation of relatively short duration of follow-up, this trial suggests that biptoral endoscopic decompressive laminectomy is an alternative to and offers similar clinical outcomes as microscopic open surgery in patients with symptomatic lumbar spinal stenosis. © 2019 Elsevier Inc. All rights reserved.

Keywords: Biptoral endoscopic spinal surgery; Degenerative spine; Laminectomy; Lumbar spinal stenosis; Microscopy; Oswestry disability index

Introduction

Lumbar spinal stenosis is characterized by a narrowed spinal canal, which leads to nerve compression. Patients with spinal stenosis complain of low back and lower extremity pain and present with decreased function, walking ability, and quality of life. Thus, patients who present with low back and leg pain due to lumbar spinal stenosis are commonly treated surgically rather than nonoperatively [1–4]. However, conventional open decompressive laminectomy can damage spinal structures such as paraspinal muscles, bone, and ligaments [2–5]. Decompression through laminectomy also has a potential risk of future instability and deformity [6]. Minimally invasive laminectomy was introduced as a tissue-sparing alternative and applied to lumbar central stenosis. Minimally invasive laminectomy revealed good clinical outcomes comparable to those of conventional surgery [3–5,7–12]. It also showed a reasonable operative time, shorter hospital stay, and reduced blood loss, time to mobilization, postoperative pain, and narcotic use when compared to that seen with conventional surgery [3–5,7–12]. However, it presents some disadvantages, including poor visualization, difficulty of instrument manipulation, potential to induce inadequate decompression, and longer operative time than other minimally invasive surgeries [3,5,7–12].

Recently, endoscopic decompressive laminectomy for lumbar stenosis has been used to treat lumbar stenosis [13,14]. However, endoscopic surgery needs specialized instruments and extensive training to reach surgical competency [15,16]. Due to the easier use of instruments and cost reduction, biptoral endoscopy has been introduced and used in lumbar surgeries, such as discectomy, laminectomy, and foraminotomy [17–35]. Biptoral endoscopic decompressive laminectomy has demonstrated satisfactory clinical outcomes, but evidence suggesting the advantages of biptoral endoscopic surgery compared to other minimally invasive laminectomy techniques is weak; therefore, a randomized controlled trial is warranted. Thus, the purpose of this study was to assess the clinical efficacy of biptoral endoscopic decompressive laminectomy compared to that of microscopic lumbar decompressive laminectomy in patients with lumbar spinal stenosis.

Materials and methods

Study design and participant population

The design and protocol of this prospective, randomized, noninferiority clinical trial was approved by the institutional

review board of our hospital (B-1708/417-003) and registered on ClinicalTrials.gov (NCT03302507). All participants gave written informed consent before enrollment. In this trial, all participants were randomly assigned in a 1:1 ratio to undergo biptoral endoscopic or microscopic lumbar decompressive laminectomy. We recruited participants from November 2017 to July 2018.

We included participants 30 to 80 years old with degenerative lumbar stenosis, radiating pain to lower extremities (visual analog scale [VAS] score >4), and definite lumbar central stenosis (Schizas grade [36] ≥B) on magnetic resonance imaging. The exclusion criteria were spondylolisthesis (Meyer grade ≥II), history of lumbar spinal surgery for spinal stenosis or instability at the same level, stenosis caused by a herniated intervertebral disc, degenerative lumbar scoliosis (Cobb angle >20°), other spinal diseases (eg, ankylosing spondylitis, spine tumor, fracture, or neurologic disorders), psychological disorders (eg, dementia, intellectual disability, or drug abuse), and other disorders which the surgeon considered as inappropriate for participation.

Randomization and follow-ups

After evaluating baseline characteristics, participants were randomized to microscopic or biptoral endoscopic surgery at a 1:1 ratio, following a computer-generated randomization list with block sizes of 4 prepared by a researcher not involved in any other aspect of this trial prior to enrollment. The randomization lists were incorporated in a web-based electronic case report form (eCRF) site (Research Electronic Data Capture [REDCap]) that was accessible to authorized researchers and used to conceal allocation. Participants did not know which surgical technique they were assigned to (single-blind). All randomized participants were operated on by a single orthopedic spine surgeon (SMP) at our tertiary institution.

Participants were actively followed up for a minimum of 12 months. The primary and secondary outcomes were collected by an independent researcher during in-hospital visits or telephone calls. The outcomes were assessed at baseline, during surgery, after surgery, at discharge, and at 3, 6, and 12 months.

Interventions

Microscopic unilateral laminectomy and bilateral decompression

The microscopic decompressive laminectomy procedure has been previously described [4]. In brief, we made a 4-cm

midline incision after fluoroscopic confirmation of surgical level. After skin incision, the multifidus muscle was dissected unilaterally from the spinous process and lamina using a Cobb elevator and retracted by a Taylor retractor. After detachment of paraspinal muscles, ipsilateral laminectomy was performed using a burr and Kerrison punches, followed by flavectomy using microscope. To view the contralateral side, the operation table and microscope were tilted approximately 10 to 20°. For decompression, undercutting of the spinous process and contralateral lamina was performed using a burr and Kerrison punches, followed by flavectomy. After contralateral laminectomy and flavectomy, complete neural decompression was confirmed by restoration of dural pulsation (Fig. 1A).

Biportal endoscopy

The biportal endoscopic decompressive laminectomy has also been previously described in several studies [17,21,33,37]. This technique is similar to microscopic decompressive laminectomy except for two portals being used. The point of this technique is to create both a viewing portal for the scope and a working portal for the spinal instruments, which also provides working space. The portal location was 0.5 to 1 cm lateral to the spinous process. The working portal was located at the lower margin of the lamina with a 1-cm incision, when the surgery was performed on the left side. The viewing portal was made vertically 1 cm proximal to the working portal with a 7-mm incision. A left side decompressive laminectomy is recommended for a right-hand dominant surgeon. After creating the two portals, detachment of the paraspinal muscles from the lamina was performed using a narrow Cobb elevator to achieve an adequate working space. A 4-mm and 30° arthroscope was inserted through the viewing portal under saline

irrigation with a pressure of 30–40 mm Hg. Instruments for laminectomy, such as a bipolar radiofrequency cauter, burr, punch, and pituitary, were inserted through the working portal. Fraying muscle and soft tissue were debried using a shaver and bipolar radiofrequency cauter. Following the creation of the working space, the laminectomy technique is the same as that of microscopic laminectomy (Fig. 1B).

Outcomes and measurements

Baseline participant characteristics were collected by researchers who were blinded to the randomization details. Before randomization, each participant was preoperatively evaluated to obtain demographics, past medical history using the Charlson comorbidity index (CCI), and the American Society of Anesthesiologists (ASA) physical status classification. Patient-reported outcomes (PROs) were also collected from participants at baseline and at 3, 6, and 12 months after surgery. The primary outcome measure was the ODI scores at the 12-month follow-up after surgery. The secondary outcome measure was the change in the PROs, includes VAS score for low back and lower extremity radiating pain, Oswestry disability index (ODI), European Quality of Life-5 Dimensions (EQ-5D) score, and painDETECT score for neuropathic pain, during follow-up periods and surgery-related outcomes. The VAS score for low back and leg pain questionnaires contains a 10-cm line with “none” (0) on one end of the scale and “severe pain” (10) on the other end. The ODI is a specialized questionnaire for low back-associated disability and quality of life (QOL). This questionnaire contains 10 questions with 6 responses for each question (scored from 0 to 5); the total ODI score is a sum of these scores which is converted into a 0 to 100 score, with higher scores indicating more severe disability and poorer QOL [38]. The EQ-5D is a general instrument for evaluating QOL. This questionnaire contains five questions with five responses for each question, and the total score is converted into the final EQ-5D value, ranging from 0 to 100, with higher scores indicating better QOL [39]. The painDETECT questionnaire is a specialized instrument to evaluate neuropathic pain. This questionnaire contains nine questions, with the final score ranging from –1 to 38 points. A score under 12 points denotes neuropathic pain is unlikely to be present, whereas a score over 19 indicates that neuropathic pain is highly likely (>90%) [40].

Surgery-related outcomes including operation time, length of hospital stay, postoperative drainage, and serum creatine phosphokinase (CPK) level were collected. Operation time was the duration of operation from skin incision to skin closure. Length of hospital stay was the duration of hospital stay after operation. Drainage was the total amount of postoperative drainage, which flowed into the Hemovac drain system (Zimmer Biomet, Warsaw, Indiana, USA). Serum CPK level, which is an indicator of muscle injury, was measured at 48 hours after operation [41]. Perioperative

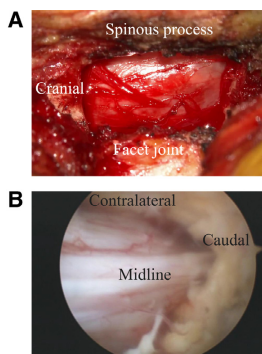


Fig. 1. Intraoperative images of the two interventions. (A) Operative field of microscopic decompressive laminectomy with a left-side approach. (B) Endoscopic image with fully decompressed dura after biportal endoscopic decompressive laminectomy.

(<30 days) and late (1–12 months) complications were also recorded. Perioperative complications were defined as intraoperative or postoperative complications within 30 days after surgery. Late complications were defined as complications after 30 days to the final follow-up. Recurrent pain was defined as recurrent low back or leg pain with a VAS score ≥ 4 during the follow-up period.

Statistical analysis

For the primary outcome analysis, we calculated that a sample size of 64 patients (32 patients in each group) would provide at least 80% power to show the noninferiority of biportal endoscopy relatively to microscopy with a one-sided alpha level of 0.05 and a noninferiority margin of 12.8 points for the ODI scores, assuming a 20% dropout rate at 12 months [42].

We analyzed primary and secondary outcomes based on the modified intention-to-treat (mITT) strategy, which indicates that participants were analyzed on whether they had undergone a randomly assigned surgery, except for participants with no ODI scores at the 12-month follow-up. Imputation, “last observation carried forward” or “last observation carried backwards,” was used for missing values. We performed an additional sensitivity analysis of noninferiority using per-protocol (PP) data which included patients who were not subjected to a major protocol violation.

The Shapiro-Wilk test was used to evaluate the distribution of the collected data. Normally distributed continuous variables are presented as mean and standard deviation (SD), whereas non-normally distributed variables are presented as median and interquartile range (IQR). Categorical variables are presented as numbers and percentages (%). For the primary outcome, 12-month ODI score, a one-sided 95% confidence interval (CI) for the group difference was calculated using a Student's *t* test. Noninferiority of biportal endoscopy was confirmed if the upper-limit of 95% CI of ODI score at 12 months was lower than the predefined noninferiority margin of 12.8 points. For serial measurements of secondary clinical outcomes (VAS pain score of back and lower extremities, ODI score, EQ-5D score, painDETECT score), we used a linear repeated-measures mixed model. We analyzed time as a categorical variable (3, 6, or 12 months) and included intervention—time interactions to analyze intervention effects at each follow-up point. We also analyzed intergroup differences during the 12-month period, controlling for baseline and follow-up time points as categorical variables, using a linear repeated-measures mixed model. Other secondary outcomes between the two groups were analyzed using analyzed using Student's *t* test (normally distributed continuous variables), the Mann-Whitney *U* test (non-normally distributed continuous variables), or the Fisher's exact test (categorical variables). All tests were conducted using Stata/MP 15.0 (StataCorp LLC, College Station, TX). A two-sided *p* value <.05 was

considered to indicate statistical significance, except for the *p* value from noninferiority test, which is one-sided.

Results

Participants

A total of 70 participants were screened for eligibility; 1 participant declined to participate in this trial and 5 participants did not meet our inclusion criteria. The remaining 64 participants consented to undergo randomization into one of the treatment groups. All participants were randomly assigned to the microscopic (32 participants) or biportal endoscopic (32 participants) lumbar decompressive laminectomy groups. There was no crossover from each randomized treatment strategy. A total of five participants who were lost to follow-up immediately after surgery and did not answer our clinical outcome assessment were censored and excluded from the mITT analysis. A further six participants were also censored and excluded from the PP primary outcome analysis (one revision surgery, two traffic accidents, one burst fracture at other vertebral level, one cerebral infarction after 6 months, and one case of lower limb herpes zoster), but these participants were included in the mITT analysis. Fig. 2 shows the study and follow-up flow diagram.

The baseline characteristics of participants assigned to each treatment group are shown in Table 1. There were no significant differences in the baseline clinical and radiographic characteristics between the two groups (all *p*>.05), except for the approach side (*p*=.025).

Primary outcome at 1 year

In the mITT analysis, there was no significant difference between two intervention groups in the primary outcome at 1 year after decompressive laminectomy. The mean ODI score at 1 year was 18.03 (95% CI, 11.01–25.05) in the microscopy group and 19.79 (95% CI, 12.15–27.41) in the biportal endoscopy group (*p*=.635). The ODI score decreased from baseline by 28.97 points in microscopy group and by 26.41 points in the biportal endoscopy group.

In the PP analysis, there was also no significant difference between the two intervention groups in the primary outcome 1 year after decompressive laminectomy. The mean ODI score at 1 year was 17.04 (95% CI, 9.69–24.39) in the microscopy group and 17.12 (95% CI, 8.53–25.71) in the biportal endoscopy group (*p*=.551). The ODI score decreased from baseline by 29.96 points in microscopy group and by 29.08 points in the biportal endoscopy group. Noninferiority of biportal endoscopic decompressive laminectomy was confirmed by the mITT and PP analyses (Table 2 and Fig. 3).

Secondary outcomes and complications

The linear mixed model showed no significant intervention effect in back and leg pain, disability, QOL, and

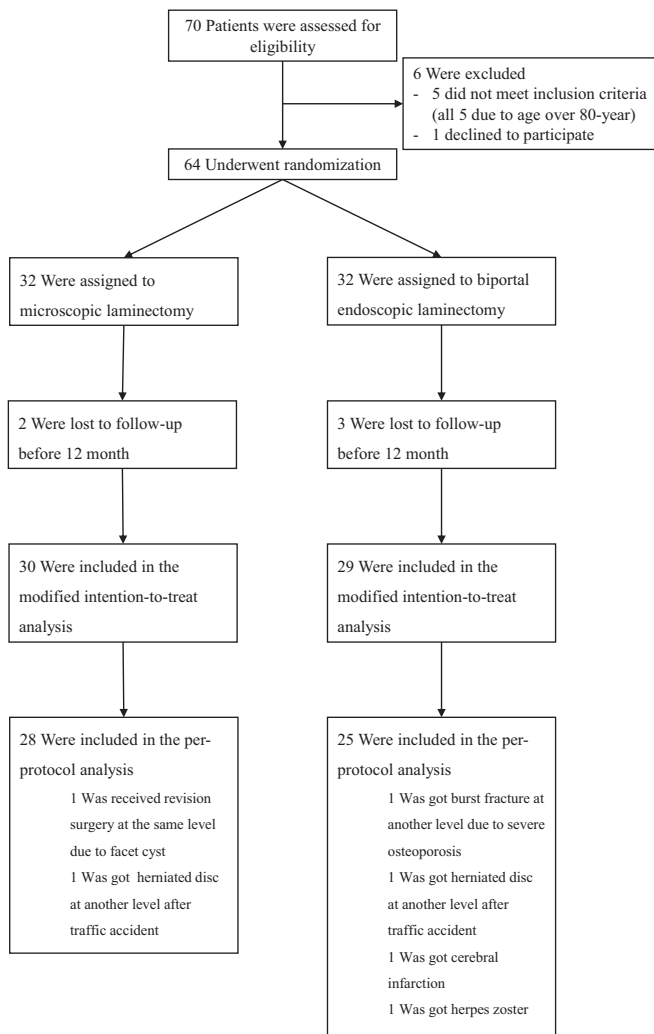


Fig. 2. Enrollment, randomization, treatment, and follow-up flow diagram.

neuropathic pain during the 12-month follow-up (Fig. 4). There were also no between-group differences in VAS back pain score, VAS lower extremity pain score, ODI score, EQ-5D score, and painDETECT score at the 3-, 6-, or 12-month follow-up (Table 3).

The operation time, length of hospital stay, and serum CPK level did not show difference significantly ($p > .05$). The length of hospital stay was lower in the bipoportal endoscopy group than in the microscopy group with marginal insignificance ($p = .067$). Postoperative drainage was significantly

Table 1
Characteristics of the participants at baseline

Characteristic	Microscopy (n=32)	Biportal endoscopy (n=32)
Age (y)*	67.1 (45–79)	66.2 (41–80)
Male/female†	18/14	13/19
BMI (kg/m ²)	24.8±2.3	25.4±3.7
CCI score	0.3±0.7	0.4±0.8
ASA score	1.9±0.7	2.0±0.6
Smoking status, n (%)		
Non/ex-smoker	23 (72%)	23 (72%)
Current smoker	9 (28%)	9 (28%)
Alcohol consumption, n (%)		
None	20 (63%)	20 (63%)
≥1 drink/month	12 (38%)	12 (38%)
VAS for back pain	6.1±2.4	6.1±2.6
VAS for leg pain	7.4±2.1	6.5±1.7
ODI	47.0±14.4	46.2±20.5
EQ-5D	0.496±0.216	0.527±0.216
Central stenosis grade, n (%)		
Grade B	2 (6%)	1 (3%)
Grade C	21 (66%)	19 (59%)
Grade D	9 (28%)	12 (38%)
Approach side, n (%)		
Right	10 (31%)	3 (9%)
Left	22 (69%)	29 (91%)
Operation level, n (%)		
L1–2	3 (9%)	0 (0%)
L2–3	3 (9%)	2 (6%)
L3–4	7 (22%)	5 (16%)
L4–5	17 (53%)	25 (77%)
L5–S1	2 (6%)	0 (0%)

BMI, body mass index; CCI, Charlson comorbidity index; ASA, American Society of Anesthesiologist; VAS, visual analog scale; ODI, Oswestry disability index; EQ-5D, European Quality of Life-5 Dimensions.

Data are presented as given as mean±standard deviation.

* Data are presented as given as mean and range in parenthesis.

† Data are presented as no. of patients.

higher in the biportal endoscopy group than in the microscopy group ($p<.001$; Table 3).

Recurrent low back and lower extremity pain occurred similarly in both groups ($p=.472$ and $.209$). Incidental durotomies and symptomatic hematoma occurred in two (7%) and one (3%) participants in both groups. One participant underwent additional revision surgery at 9 months after the index surgery in the microscopy group. No major complications, such as surgery-related death, thromboembolic

Table 2
Mean Oswestry disability index (ODI) scores at 12-month after surgery

Analysis	Number of participants	Mean±standard deviation	95% CI	Mean difference	95% CI of difference	p Value
mITT	Microscopy (n=30)	18.03±18.80	11.01–25.05	1.75	–8.37–11.87	.635
	Biportal endoscopy (n=29)	19.79±19.67	12.15–27.41			
PP	Microscopy (n=28)	17.04±18.96	9.69–24.39	0.08	–10.88–11.05	.506
	Biportal endoscopy (n=25)	17.12±20.80	8.53–25.71			

mITT, modified intention-to-treat; PP, per protocol; CI, confidence interval.

Data are presented as given as mean±standard deviation.

Data are presented using both modified intention-to-treat (mITT) and per-protocol (PP) analyses.

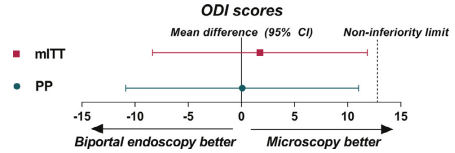


Fig. 3. Graph showing the lack of difference in ODI scores between the two interventions 1 year after surgery for both the modified intention-to-treat and per-protocol analyses. The dashed line indicates the noninferiority margin of 12.8 points. Noninferiority of biportal endoscopy is confirmed if the upper boundary of the two-sided 95% CI is below this margin.

events, pneumonia, infection, stroke, and neurological damage were observed (Table 3).

Discussion

This randomized controlled trial, which included 64 participants with lumbar central stenosis, was designed to compare the clinical outcomes between microscopic and biportal endoscopic laminectomy at 12 months after surgery and confirmed the noninferiority of biportal endoscopy compared to microscopy. The more technically advanced procedure of biportal endoscopy showed similar clinical improvements and complication rates during the 12-month follow-up after surgery in our study.

Recently, to save normal vertebral structures, the endoscopic decompressive laminectomy technique has been introduced [13,14,20,37,43]. However, laminectomy using uniportal endoscopy has a steep learning curve and a high rate of complications [15,44]. Biportal endoscopy has several advantages over previous uniportal endoscopic surgery [22,24]. The endoscope used in biportal surgery is the same as those used in knee arthroscopy. Therefore, the endoscopy instruments can be shared with sports medicine surgeons for knee or shoulder arthroscopy; this can reduce medical costs. The endoscope has a wider field of view than uniportal endoscope, and has very similar view to those with a microscope, which is commonly used by spine surgeons. Viewing and working portals are separate, so both hands can be freely used to view. Especially, when using the 30-degree endoscope, the contralateral sublamina space

162

S.-M. Park et al. / The Spine Journal 20 (2020) 156–165

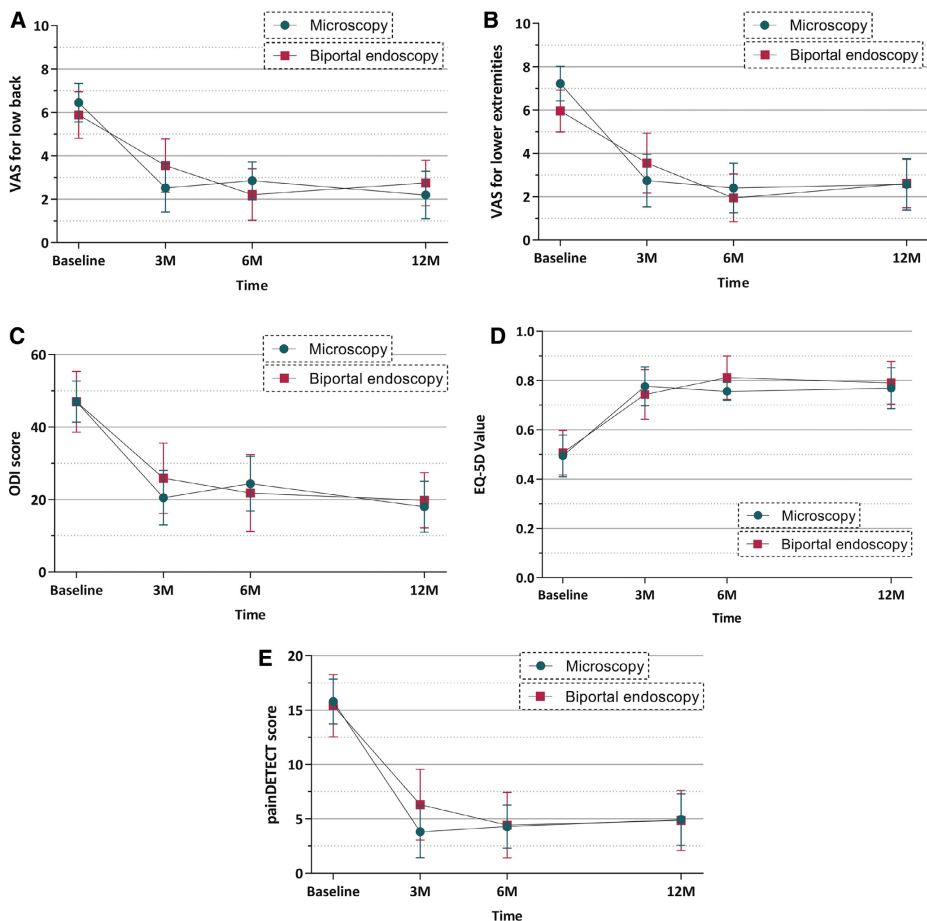


Fig. 4. Changes in secondary outcomes between the two interventions during the 12-month follow-up period. (A) Changes in mean VAS low back pain score, ranging from 0 (no pain) to 10 (worst pain). (B) Changes in mean VAS lower extremity pain score, ranging from 0 (no pain) to 10 (worst pain). (C) Changes in mean ODI score, ranging from 0 (no disability) to 100 (high disability). (D) Changes in mean EQ-5D value, ranging from 0 (worst quality of life) to 100 (best quality of life). (E) Changes in mean painDETECT score, ranging from -1 (neuropathic pain less likely) to 38 (neuropathic pain most likely). Error bars indicate 95% CIs. VAS, visual analog scale; ODI, Oswestry disability index; EQ-5D, European Quality of Life-5 Dimensions.

can be seen easily. Therefore, this technique is quite convenient because the manipulation of spine instruments is easier than that of the tubular endoscopic or microscopic ULBD. As previously reported, after about 30 cases, surgical competency is comparable to that of microscopic ULBD [19,21]. However, the disadvantage is that the bleeding control is more challenging, but it can be decreased by continuous saline irrigation. High water pressure can cause

intracranial pressure elevation and cause postoperative headache [19]. The rate of complications, such as root injury, durotomy, symptomatic hematoma, has been reported to be approximately 6% [22], which is similar to the rate of early complications in our study.

The results of this trial are only valid for patients who had lumbar central stenosis at one vertebral level. The mITT and PP analyses confirmed the noninferiority of

Table 3

Secondary outcomes and complications for microscopy and biptoral endoscopy groups after surgery during 12-month follow-up

Variables	Microscopy	Biportal endoscopy	Mean difference (95% CI)	p Value
VAS back				
3 months	2.52±2.57	3.55 ±2.63	1.03 (−0.58 to 2.63)	.132
6 months	2.85±1.87	2.21±2.46	−0.64 (−2.05 to 0.78)	.688
12 months	2.20±2.94	2.75±2.70	0.55 (−0.93 to 2.04)	.493
Overall intervention effect*	NA	NA	NA	.109
VAS lower extremities				
3 month	2.74±2.80	3.55±2.95	0.81 (−0.96 to 2.58)	.332
6 month	2.40±2.44	1.95±2.30	−0.45 (−1.99 to 1.09)	.488
12 month	2.57±3.19	2.61±2.86	0.04 (−1.56 to 1.64)	.991
Overall intervention effect*	NA	NA	NA	.486
ODI				
3 month	20.48±17.45	25.90±20.73	5.42 (−6.33 to 17.18)	.426
6 month	24.35±16.14	21.79±21.92	−2.56 (−15.00 to 9.88)	.541
12 month	18.03±18.80	19.79±19.67	1.75 (−8.37 to 11.87)	.630
Overall intervention effect*	NA	NA	NA	.571
EQ-5D				
3 month	0.777±0.184	0.744±0.198	−0.033 (−0.156 to 0.091)	.530
6 month	0.756±0.079	0.812±0.183	0.056 (−0.034 to 0.147)	.244
12 month	0.769±0.223	0.791±0.224	0.022 (−0.096 to 0.140)	.672
Overall intervention effect*	NA	NA	NA	.505
painDETECT				
3 month	3.83±5.52	6.30±6.98	2.47 (−1.38 to 6.33)	.284
6 month	4.30±4.26	4.42±6.27	0.12 (−3.34 to 3.59)	.774
12 month	4.93±6.31	4.86±7.12	−0.08 (−3.61 to 3.46)	.929
Overall intervention effect*	NA	NA	NA	.576
Surgery-related outcomes				
Operative time (min)	70.2±22.8	67.2±19.8		.586
Length of hospital stay (hours)	58.4±33.9	45.6±16.2		.067
Drainage ^c	27.5 (12.6–53.9)	97.5 (70.0–163.0)		<.001
CPK (IU/l) ¹	151.0 (107.0–216.8)	111.0 (83.3–230.3)		.250
Recurrent pain, No. (%) ^{1,5}				
Low back	3 (10%)	5 (17%)		.472
Lower extremities	9 (30%)	4 (14%)		.209
Complications, No. (%) ²				
Incidental durotomy	2 (7%)	2 (7%)		1.000
Symptomatic hematoma with revision surgery	1 (3%)	1 (3%)		1.000
Revision surgery due to recurrent pain	1 (3%)	0 (0%)		1.000

95% CI, 95% confidence interval; VAS, visual analog scale; NA, not available; ODI, Oswestry disability index; EQ-5D, European Quality of Life-5 Dimensions; CPK, creatine phosphokinase.

Data are presented as given as mean±standard deviation, unless otherwise indicated.

* p value is from linear mixed models for repeated measures comparing between interventions during 12-month follow-up period.

¹ Data are presented as median (interquartile range).

² The Fisher's exact test was used and the values are presented as numbers and percentages (%).

⁵ Recurrent pain was defined as recurrent low back or leg pain over VAS score 4 during follow-up period.

biportal endoscopy in relation to microscopic surgery, with only minor differences in the overall results between the two interventions during the follow-up period, which is in accordance with previous studies [24,35]. Another trial with a 6-month follow-up also showed that the clinical outcomes were similar to those of open surgery [35]. In addition, biportal surgery also showed a lower operating time, less postoperative drainage, and shorter hospital stay. But, our trial showed no significant difference in operation time, and length of hospital stay. In the preliminary study to this trial, we found faster surgical site pain recovery and lower fentanyl usage [33]. These clinical results demonstrate that biportal endoscopic decompressive laminectomy is a good

alternative to and offers clinical advantages in terms of faster pain relief in comparison with open microscopic decompressive laminectomy.

The most important advantage of endoscopic surgery is the preservation of normal spine anatomy. Previous studies demonstrated less postoperative pain and opioid use after biportal endoscopic surgery [33,35]. Also the other study showed significantly lower C-reactive protein in biportal endoscopy at postoperative 1 week after surgery [24]. But, this trial could not demonstrate lower muscle injuries in biportal endoscopy. Although the biportal endoscopy needed a small incision and muscle stripping during surgery, it requires muscle splitting and shaving of the working

space, which may have elevated the serum CPK level in the biportal endoscopy group. The drainage volume after surgery was significantly larger in the biportal endoscopic surgery. The reason is the irrigation saline during operation infiltrated into surrounding muscle and leaked into the drain after surgery. Another reason for this is that bleeding controlled by the water pressure during operation may have drained out postoperatively.

To our knowledge, this trial is the first to investigate the clinical outcomes between microscopic and biportal endoscopic laminectomy at 12 months after surgery. We found no intervention effect on 12-month clinical outcomes after laminectomy. However, our trial has several limitations. First, this trial had a small sample size, which prevents more generalized conclusions on the potential differences between the two interventions. The initial sample size calculation determined 32 participants would be necessary in each group, considering a 20% drop-out rate. At the last follow-up time point, a compliance above 92% was observed. Therefore, this trial analyzed more participants than planned. Second, the 12 months end-point of our trial was not long enough to assess the benefit or disadvantage of biportal endoscopic or microscopic surgery. Continued follow-up is planned. Third, there was no regular follow-up of validated and reliable imaging studies to evaluate instability or re-stenosis in all participants. Due to the high cost and low repeatability [45], magnetic resonance imaging and dynamic radiographs could not be performed for evaluation. Fourth, our trial clinicians were not blinded to intervention allocation. Since the surgeon was not blinded to patient allocation, we were compelled to do a single-blind study. However, the outcome measures were performed by an independent researcher who was not aware of the allocation; participants were also blinded to their allocation. Therefore, the single-blind design is not likely to have affected the results. Finally, multiple comparisons, which were used for analyzing secondary outcomes, increase the risk of type 1 error. The interpretation of the statistical effects of interventions on secondary outcomes should be done considering this potential limitation.

Conclusions

In this randomized controlled trial of patients with lumbar central stenosis, the results confirmed the noninferiority of biportal endoscopy to microscopic decompressive laminectomy. Our findings revealed no differences in clinical outcomes between the two interventions at 12 months after surgery. Therefore, for patients with lumbar central stenosis who are considered for lumbar decompressive laminectomy, biportal endoscopic decompressive laminectomy is a feasible surgical procedure option.

Acknowledgments

This study was partially supported by research grants from Daewon Pharmaceutical Corporation in Seoul, Republic of

Korea. The funder had no role in the study design, data collection and analysis, decision to publish, or preparation of the manuscript.

References

- [1] Forsth P, Olafsson G, Carlsson T, Frost A, Borgstrom F, Fritzell P, et al. A randomized, controlled trial of fusion surgery for lumbar spinal stenosis. *N Engl J Med* 2016;374:1413–23.
- [2] Demirayak M, Sisman L, Turkmen F, Efe D, Pekince O, Goncu RG, et al. Clinical and radiological results of microsurgical posterior lumbar interbody fusion and decompression without posterior instrumentation for lateral recess stenosis. *Asian Spine J* 2015;9:713–20.
- [3] Uehara M, Takahashi J, Hashidate H, Mukaiyama K, Kuraishi S, Shimizu M, et al. Comparison of spinous process-splitting laminectomy versus conventional laminectomy for lumbar spinal stenosis. *Asian Spine J* 2014;8:768–76.
- [4] Dohzono S, Toyoda H, Matsumura A, Terai H, Suzuki A, Nakamura H. Clinical and radiological outcomes after microscopic bilateral decompression via a unilateral approach for degenerative lumbar disease: minimum 5-year follow-up. *Asian Spine J* 2017;11:285–93.
- [5] Mobbs RJ, Li J, Sivabalan P, Raley D, Rao PJ. Outcomes after decompressive laminectomy for lumbar spinal stenosis: comparison between minimally invasive unilateral laminectomy for bilateral decompression and open laminectomy: clinical article. *J Neurosurg Spine* 2014;21:179–86.
- [6] Fox MW, Onofrio BM, Onofrio BM, Hanssen AD. Clinical outcomes and radiological instability following decompressive lumbar laminectomy for degenerative spinal stenosis: a comparison of patients undergoing concomitant arthrodesis versus decompression alone. *J Neurosurg* 1996;85:793–802.
- [7] Arai Y, Hirai T, Yoshii T, Sakai K, Kato T, Enomoto M, et al. A prospective comparative study of 2 minimally invasive decompression procedures for lumbar spinal canal stenosis: unilateral laminotomy for bilateral decompression (ULBD) versus muscle-preserving interlaminar decompression (MILD). *Spine (Phila Pa 1976)* 2014;39:332–40.
- [8] Thome C, Zevgaridis D, Lehta O, Bazner H, Pockler-Schöniger C, Wöhrle J, et al. Outcome after less-invasive decompression of lumbar spinal stenosis: a randomized comparison of unilateral laminotomy, bilateral laminotomy, and laminectomy. *J Neurosurg Spine* 2005;3:129–41.
- [9] Ko S, Oh T. Comparison of bilateral decompression via unilateral laminotomy and conventional laminectomy for single-level degenerative lumbar spinal stenosis regarding low back pain, functional outcome, and quality of life—a randomized controlled, prospective trial. *J Orthop Surg Res* 2019;14:252.
- [10] Mobbs R, Phan K. Minimally invasive unilateral laminectomy for bilateral decompression. *JBJS Essent Surg Tech* 2017;7:e9.
- [11] Phan K, Mobbs RJ. Minimally invasive versus open laminectomy for lumbar stenosis: a systematic review and meta-analysis. *Spine (Phila Pa 1976)* 2016;41:E91–E100.
- [12] Ulrich NH, Burgstaller JM, Gravestock I, Pichierri G, Wertli MM, Steurer J, et al. Outcome of unilateral versus standard open midline approach for bilateral decompression in lumbar spinal stenosis: is “over the top” really better? A Swiss prospective multicenter cohort study. *J Neurosurg Spine* 2019;1–10.
- [13] Polikandriotis JA, Hudak EM, Perry MW. Minimally invasive surgery through endoscopic laminotomy and foraminotomy for the treatment of lumbar spinal stenosis. *J Orthop* 2013;10:13–6.
- [14] Wong AP, Smith ZA, Lall RR, Bresnahan LE, Fessler RG. The micro-endoscopic decompression of lumbar stenosis: a review of the current literature and clinical results. *Minim Invasive Surg* 2012;2012:325095.
- [15] Wen B, Zhang X, Zhang L, Huang P, Zheng G. Percutaneous endoscopic transforaminal lumbar spinal canal decompression for lumbar spinal stenosis. *Medicine (Baltimore)* 2016;95:e5186.

- [16] Tenenbaum S, Arzi H, Herman A, Friedlander A, Levinkopf M, Arnold PM, et al. Percutaneous posterolateral transforaminal endoscopic discectomy: clinical outcome, complications, and learning curve evaluation. *Surg Technol Int* 2011;21:278–83.
- [17] Kim JE, Choi DJ. Unilateral biportal endoscopic decompression by 30 degrees endoscopy in lumbar spinal stenosis: technical note and preliminary report. *J Orthop* 2018;15:366–71.
- [18] Torudom Y, Dilokhuttakarn T. Two portal percutaneous endoscopic decompression for lumbar spinal stenosis: preliminary study. *Asian Spine J* 2016;10:335–42.
- [19] Choi DJ, Choi CM, Jung JT, Lee SJ, Kim YS. Learning curve associated with complications in biportal endoscopic spinal surgery: challenges and strategies. *Asian Spine J* 2016;10:624–9.
- [20] Soliman HM. Irrigation endoscopic decompressive laminotomy. A new endoscopic approach for spinal stenosis decompression. *Spine J* 2015;15:2282–9.
- [21] Park SM, Kim HJ, Kim GU, Choi MH, Chang BS, Lee CK, et al. Learning curve for lumbar decompressive laminectomy in biportal endoscopic spinal surgery using the cumulative summation test for learning curve. *World Neurosurg* 2019;122:e1007–e13.
- [22] Kim JE, Choi DJ, Park EJJ, Lee HJ, Hwang JH, Kim MC, et al. Biportal endoscopic spinal surgery for lumbar spinal stenosis. *Asian Spine J* 2019;13:334–42.
- [23] Kim JE, Choi DJ, Park EJ. Evaluation of postoperative spinal epidural hematoma after biportal endoscopic spine surgery for single-level lumbar spinal stenosis: clinical and magnetic resonance imaging study. *World Neurosurg* 2019:e786–e92.
- [24] Choi DJ, Kim JE. Efficacy of biportal endoscopic spine surgery for lumbar spinal stenosis. *Clin Orthop Surg* 2019;11:82–8.
- [25] Kim SK, Kang SS, Hong YH, Park SW, Lee SC. Clinical comparison of unilateral biportal endoscopic technique versus open microdiscectomy for single-level lumbar discectomy: a multicenter, retrospective analysis. *J Orthop Surg Res* 2018;13:22.
- [26] Kim JE, Choi DJ, Park EJ. Clinical and radiological outcomes of foraminal decompression using unilateral biportal endoscopic spine surgery for lumbar foraminal stenosis. *Clin Orthop Surg* 2018;10:439–47.
- [27] Kim JE, Choi DJ. Unilateral biportal endoscopic spinal surgery using a 30 degrees arthroscope for L5-S1 foraminal decompression. *Clin Orthop Surg* 2018;10:508–12.
- [28] Kim JE, Choi DJ. Biportal endoscopic transforaminal lumbar interbody fusion with arthroscopy. *Clin Orthop Surg* 2018;10:248–52.
- [29] Kim JE, Choi DJ. Clinical and radiological outcomes of unilateral biportal endoscopic decompression by 30 degrees arthroscopy in lumbar spinal stenosis: minimum 2-year follow-up. *Clin Orthop Surg* 2018;10:328–36.
- [30] Heo DH, Quillo-Olvera J, Park CK. Can percutaneous biportal endoscopic surgery achieve enough canal decompression for degenerative lumbar stenosis? Prospective case-control study. *World Neurosurg* 2018;120:e684–e9.
- [31] Choi KC, Shim HK, Hwang JS, Shin SH, Lee DC, Jung HH, et al. Comparison of surgical invasiveness between microdiscectomy and 3 different endoscopic discectomy techniques for lumbar disc herniation. *World Neurosurg* 2018;116:e750–e8.
- [32] Choi DJ, Kim JE, Jung JT, Kim YS, Jang HJ, Yoo B, et al. Biportal endoscopic spine surgery for various foraminal lesions at the lumbosacral lesion. *Asian Spine J* 2018;12:569–73.
- [33] Park SM, Kim GU, Kim HJ, Choi JH, Chang BS, Lee CK, et al. Is the use of a unilateral biportal endoscopic approach associated with rapid recovery after lumbar decompressive laminectomy? A preliminary analysis of a prospective randomized controlled trial. *World Neurosurg* 2019:e709–e18.
- [34] Kim JE, Choi DJ, Kim MC, Park EJ. Risk factors of postoperative spinal epidural hematoma after biportal endoscopic spinal surgery. *World Neurosurg* 2019:e324–e9.
- [35] Kang T, Park SY, Kang CH, Lee SH, Park JH, Suh SW. Is biportal technique/endoscopic spinal surgery satisfactory for lumbar spinal stenosis patients? A prospective randomized comparative study. *Medicine (Baltimore)* 2019;98:e15451.
- [36] Schizas C, Theumann N, Burn A, Tansey R, Wardlaw D, Smith FW, et al. Qualitative grading of severity of lumbar spinal stenosis based on the morphology of the Dural sac on magnetic resonance images. *Spine (Phila Pa 1976)* 2010;35:1919–24.
- [37] Choi CM, Chung JT, Lee SJ, Choi DJ. How I do it? Biportal endoscopic spinal surgery (BESS) for treatment of lumbar spinal stenosis. *Acta Neurochir (Wien)* 2016;158:459–63.
- [38] Fairbank JC, Pynsent PB. The Oswestry disability index. *Spine (Phila Pa 1976)* 2000;25:2940–52. discussion 52.
- [39] Herdman M, Gudex C, Lloyd A, Janssen M, Kind P, Parkin D, et al. Development and preliminary testing of the new five-level version of EQ-5D (EQ-5D-5L). *Qual Life Res* 2011;20:1727–36.
- [40] Freynhagen R, Baron R, Gockel U, Tolle TR. painDETECT: a new screening questionnaire to identify neuropathic components in patients with back pain. *Curr Med Res Opin* 2006;22:1911–20.
- [41] Akcakaya MO, Yorukoglu AG, Aydoseli A, Aras Y, Sabanci PA, Altunrende ME, et al. Serum creatine phosphokinase levels as an indicator of muscle injury following lumbar disc surgery: comparison of fully endoscopic discectomy and microdiscectomy. *Clin Neurol Neurosurg* 2016;145:74–8.
- [42] Copay AG, Glassman SD, Subach BR, Berven S, Schuler TC, Carreon LY. Minimum clinically important difference in lumbar spine surgery patients: a choice of methods using the Oswestry Disability Index, Medical Outcomes Study questionnaire Short Form 36, and pain scales. *Spine J* 2008;8:968–74.
- [43] Komp M, Hahn P, Oezdemir S, Giannakopoulos A, Heikenfeld R, Kasch R, et al. Bilateral spinal decompression of lumbar central stenosis with the full-endoscopic interlaminar versus microsurgical laminotomy technique: a prospective, randomized, controlled study. *Pain Phys* 2015;18:61–70.
- [44] Sairyo K, Sakai T, Higashino K, Inoue M, Yasui N, Dezawa A. Complications of endoscopic lumbar decompression surgery. *Minim Invasive Neurosurg* 2010;53:175–8.
- [45] Cabrera M, Mohamed E, Koeppe D, Kroppstedt S. The analysis of segmental mobility with different lumbar radiographs in symptomatic patients with a spondylolisthesis. *Eur Spine J* 2012;21:256–61.



Indications, Contraindications, and Complications of Biportal Endoscopic Decompressive Surgery for the Treatment of Lumbar Stenosis: A Systematic Review

Dong Hwa Heo⁴, Don Young Park¹, Hyun Jin Hong², Young Ho Hong³, Hungtae Chung⁴

■ **BACKGROUND:** Biportal endoscopic spine surgery is gaining popularity in managing degenerative lumbar diseases and has optimal indications and contraindications. The perioperative complications related to the biportal endoscopic approach affect the postoperative outcomes. Therefore, this study aimed to review the indications, contraindications, and complications of biportal endoscopic decompression for lumbar stenosis.

■ **METHODS:** For this systematic review, articles on biportal endoscopic decompressive surgery for lumbar stenosis, including central, lateral recess and foraminal stenoses, were searched for and reviewed. Additionally, the complications, indications, and contraindications of biportal endoscopic surgery for lumbar stenosis were reviewed.

■ **RESULTS:** Forty-one articles were included in this study. The indications for biportal endoscopic decompression are central lumbar stenosis, central stenosis with lipomatosis, lateral recess stenosis, foraminal stenosis, and the far-out syndrome. The contraindications include trauma, infection, tumor, instability, high-grade spondylolisthesis, isthmic spondylolisthesis, and severe scoliosis. Perioperative complications are typically minor; major complications include durotomy, epidural hematoma, incomplete decompression, infection, facet joint injury, neural injury, increased epidural pressure, and postoperative instability.

■ **CONCLUSIONS:** Favorable indications for a biportal endoscopic approach are central lumbar, lateral recess,

foraminal, extraforaminal stenoses, and the Bertolotti syndrome. Incidental durotomy and postoperative epidural hematomas are common complications of biportal endoscopic decompression.

INTRODUCTION

Techniques and instruments for endoscopic spine surgery have been actively developed,¹ and biportal endoscopic approaches have been introduced and attempted for the treatment of degenerative spinal disease in the past.^{1,2} In the past, endoscopic spine surgery was usually attempted to treat lumbar disc diseases, such as disc degeneration, ruptured extrusion, and protrusion. Additionally, central lumbar stenosis, lumbar foraminal stenosis, foraminal recurrent disc herniation, lumbar spondylolisthesis, and segmental instability have been treated with endoscopic spine surgery.^{2,3} As the indications for endoscopic spine surgery have increased, the indications for biportal endoscopic spine surgery continue to expand as well.^{3,4} The biportal endoscopic approach has been used for discectomy and decompression to fusion surgery from the cervical to lumbosacral area. The biportal endoscopic approach has a relatively shorter learning curve than uniportal endoscopic surgery as the surgical anatomy is familiar, the spinal instruments are easy to handle, and the endoscopy is magnified. However, an absence of depth perception exists, and the procedure is technically difficult compared to microsurgery.

There are certain contraindications and complications of biportal endoscopic spine surgeries and their awareness is

Key words

- Biportal
- Complications
- Contraindications
- Endoscopy
- Indications
- Lumbar
- Stenosis

Abbreviations and Acronyms

CSF: Cerebrospinal fluid
MRI: Magnetic resonance imaging
PRISMA: Preferred Reporting Items for Systematic Reviews and Meta-Analyses

From the ¹Orthopedics, David Geffen School of Medicine, UCLA, Los Angeles, California, USA; ²Neurosurgery, Spine Center, The Leon Wiltse Memorial Hospital, Anyang, South Korea; ³Neurosurgery, Spine Center, Bundang Baronsang Hospital, Bundang, South Korea; and ⁴Neurosurgery, Endoscopic Spine Surgery Center, Seoul Bumin Hospital, Seoul, South Korea

To whom correspondence should be addressed: Hyun Jin Hong, M.D.
[E-mail: foxhound81@hanmail.net]

Citation: World Neurosurg. (2022) 168:411-420.
<https://doi.org/10.1016/j.wneu.2022.09.023>

Journal homepage: www.journals.elsevier.com/world-neurosurgery

Available online: www.sciencedirect.com

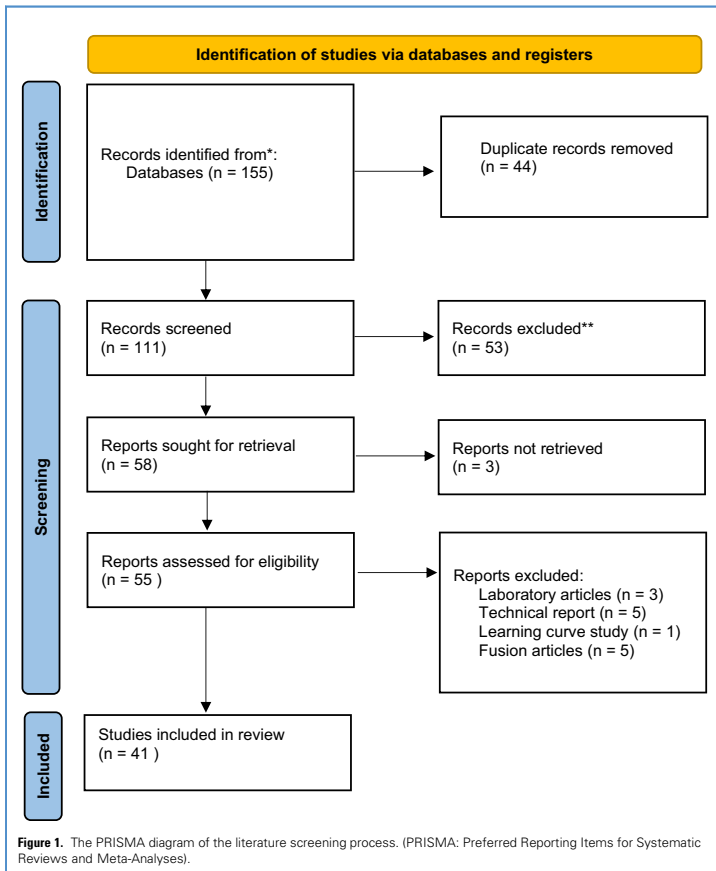
1878-8750/\$ - see front matter © 2022 Elsevier Inc. All rights reserved.

essential. The prevention and management of perioperative complications significantly influence the postoperative outcomes of this approach. Through a systematic literature review, this study aimed to investigate the indications, contraindications, and complications of biportal endoscopic surgery for lumbar stenosis.

MATERIALS AND METHODS

A systematic review was performed on previously published articles. Web-based electronic databases — PubMed, Embase, the Cochrane Library, and Web of Science — were searched systematically to identify articles on biportal endoscopic decompression

of lumbar stenosis. In addition, a systematic search was performed by 2 spine neurosurgeons with abundant experience in biportal endoscopic surgery to reduce selection error and missed articles. The search terms were “biportal,” “endoscopic,” “decompression,” “lumbar stenosis,” “complications,” “indication,” and “contraindications and combinations.” Article titles and abstracts were reviewed using the PRISMA (Preferred Reporting Items for Systematic Reviews and Meta-Analyses) checklist (Figure 1). The full text of each article was reviewed. Cadaveric studies, commentaries, laboratory articles, non-English articles, and articles related to cervical lesions, thoracic lesions, and tumorous lesions were excluded. Traumatic lesions and biportal endoscopic fusion procedures were also excluded, as this review



was focused on degenerative lumbar disease and only decompression procedures without fusion or fixation.

The indications and contraindications of biportal endoscopic spine surgery for lumbar stenosis were reviewed using the full text of each article. In addition, all the complications and the management approach of these complications related to biportal endoscopy for lumbar stenosis were investigated.

RESULTS

A total of 155 articles were found in the databases. After duplicate articles were removed and the exclusion criteria were applied, 55 relevant articles were identified. The full text of each of these studies was reviewed. Laboratory studies, technical reports, fusion studies, and learning curve studies were excluded (Figure 1). Finally, 41 articles were selected for analysis (Figure 1)^{1,2,5-43} comprising 25 articles that were related to lumbar central or lateral recess stenosis, 8 related to lumbar foraminal or extraforaminal stenosis, and 8 related to the complications of the biportal endoscopic approach.

Indications and Contraindications

The biportal endoscopic approach has been successfully used to treat lumbar central or lateral recess stenosis (23 articles), central stenosis with lipomatosis (1 article),¹⁹ lumbar foraminal and extraforaminal stenosis (6 articles), and the far-out syndrome (2 articles, extraforaminal entrapment of the L5 nerve root by lumbosacral transitional vertebrae) (Figure 2)^{6,7,9-11,19-24,28,30,32,35,40,42,44}. Therefore, these stenotic lesions were considered the most favorable indications for the biportal endoscopic approach (Table 1).

Traumatic lesions, infections, tumors, musculoskeletal disorders, instability, high-grade spondylolisthesis, isthmic spondylolisthesis, and severe scoliosis (deformity) were contraindications to biportal endoscopic decompressive surgery (Table 1).^{1,2,6,9,14,20,28,30}

Complications

The overall incidence of clinically symptomatic complications was below 10%.^{15,40,41} Most complications were minor,³⁸ and none were life-threatening complications, such as thromboembolism, sepsis, severe bleeding, or pulmonary complications.^{38,40} The complications reported for biportal endoscopic decompression of lumbar stenosis were dural tears (incidental durotomy) (Figure 3), cerebrospinal fluid (CSF) leak, pseudo-meningocele, postoperative epidural hematoma, incomplete decompression, infection, facet joint injury, neural injury, headache, neck pain, and postoperative instability (Table 2).^{5,9,14,18,21,25,27,36,39} Headache and neck pain may be related to increased epidural pressure due to continuous saline irrigation.^{5,14,17} Neural injuries usually induce transient weakness or hypesthesia (Table 2).^{1,14} These minor complications were treated conservatively. Symptomatic epidural hematomas or uncontrolled CSF leaks required surgical revision.^{5,25}

Two articles on postoperative epidural hematomas reported its incidence to be 24.7%¹ and 23.6%.² Most epidural hematomas were asymptomatic and identified as incidental findings on postoperative magnetic resonance imaging. Only 1.9% of patients who developed a postoperative epidural hematoma needed revision surgery.^{1,2}

In biportal endoscopic foraminal or extraforaminal decompression cases, hydroperitoneum and retroperitoneal fluid collection rarely occurred.^{10,13} Arterial bleeding from the radicular artery was another reported complication (Table 2).^{6,10}

DISCUSSIONS

Indications and Contra-indications of Biportal Endoscopy for Lumbar Stenosis

Indications for the biportal endoscopic approach may be similar to those for minimally invasive microscopic surgery using tubular retractor systems in cases of lumbar stenosis. There were central, lateral recess, foraminal, and extraforaminal stenoses in lumbosacral transitional vertebrae (Bertolotti's syndrome, far-out syndrome) caused by lumbar stenosis.^{1,2,6,9,11,13,19,21,23,24,30,35,40-42}

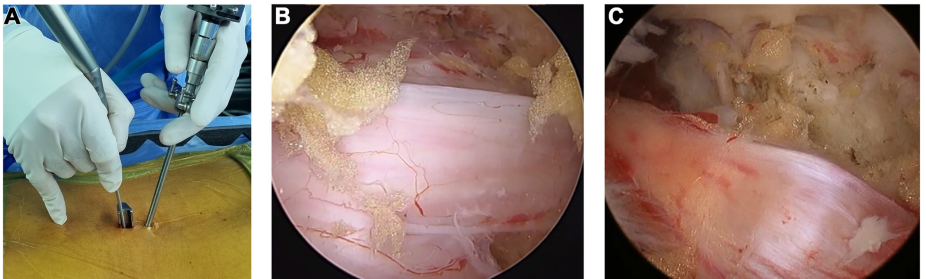


Figure 2. Overview of biportal endoscopic lumbar surgery (A). A working sheath is inserted into the working portal (A). An endoscopic image of

central canal decompression (B) an intraoperative endoscopic image of the decompression of an exiting nerve root for foraminal stenosis (C).

Table 1. Indications and Contraindications of Bipoportal Endoscopic Decompression for Lumbar Stenosis

Indications	Contraindications
Lumbar Central stenosis	Instability
Lumbar Lateral recess stenosis	High grade spondylolisthesis
Lumbar Foraminal stenosis	Infection
Lumbar Extraforaminal stenosis	Scoliosis
Lumbosacral transitional vertebrae (far out syndrome)	Tumor Trauma
	Isthmic spondylolisthesis
	Musculoskeletal disorder

All degenerative lumbar stenotic lesions were indications for bipoportal endoscopic lumbar decompression. Lumbar central or lateral recess stenoses were treated using bipoportal endoscopic unilateral lumbar laminotomy with bilateral decompression. Lumbar foraminal or extraforaminal stenoses were treated with bipoportal endoscopic lateral foraminotomy using the paraspinous approach.^{6,10,22-24,26} Multilevel stenosis can also be treated using the bipoportal endoscopic approach. This approach may be used to treat most lumbar stenoses, as is the case for microscopic surgery.

The contraindications for bipoportal endoscopic decompression were instability, high-grade spondylolisthesis, deformity, infectious lesions, and stenosis with a concomitant congenital anomaly.^{9,20,30} These contraindications usually require lumbar interbody fusion rather than bipoportal endoscopic decompression surgery.

Complications Related to Bipoportal Endoscopic Decompression

Although various complications can occur during bipoportal endoscopic decompression, most perioperative complications are

minor.^{9,14,38,40} The prevention and early management of complications related to bipoportal endoscopic procedures influence the postoperative outcomes.³¹

Dural Tear. Incidental durotomy (dural tear) is a complication of bipoportal endoscopic decompression (Figure 3).^{11,16,21,30,31,36,39} This approach causes 2 types of dural tears as follows: intraoperative recognized and intraoperative unrecognized incidental durotomy (Table 3). Incidental durotomy is usually detected endoscopically (Figure 3, intraoperatively recognized incidental durotomy). Durotomy usually occurs during the removal of the hypertrophied ligamentum flavum. Anatomically, the posterior epidural ligament (Figure 4A and B) and Hoffmann's ligament (anterior dural ligament) (Figure 4C) may be related to dural tears. The posterior epidural ligament is connected between the posterior dura and ligamentum flavum, and Hoffmann's ligament is connected between the anterior dura and posterior longitudinal ligament. These 2 ligaments may be anatomical factors in incidental durotomy during the bipoportal endoscopic approach.

The bipoportal endoscopic approach is performed using continuous saline irrigation. However, continuous saline irrigation influences the elevation of epidural pressure. Moreover, in a large durotomy area, continuous saline may flow into the intradural space. Finally, there is a high possibility of increased epidural and intracranial pressures due to intradural fluid inflow. Therefore, the dural tear site should be repaired to prevent nerve rootlet herniation and inflow of irrigation fluid. If the primary dural repair fails, conversion from endoscopic surgery to microscopic surgery was recommended for a successful dural repair.

The primary dural repair was attempted using direct sutures or sutureless nonpenetrating clips (Figure 5A).^{12,36} Small size (within 1 cm) durotomy could be repaired using several pieces of a fibrin sealant patch (TachoSil) (Figure 5B).^{12,14,15,18,36}

If CSF leaks through an epidural drainage catheter and bag or skin wound, hydration with bed rest is recommended from 5–7 days postoperatively. If the CSF leak is not controlled with

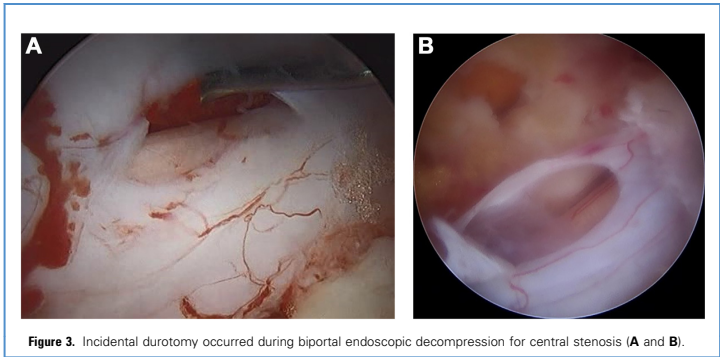


Figure 3. Incidental durotomy occurred during bipoportal endoscopic decompression for central stenosis (A and B).

Table 2. Complications of Biptortal Endoscopic Decompression for Lumbar Stenosis

Lumbar Stenosis	Complications
Central or lateral recess stenosis	Dural tear (CSF leak)
	Pseudo-meningocele
	Postoperative epidural hematoma
	Incomplete decompression
	Increased epidural pressure (headache, neck pain)
	Neural injury
	Transient weakness
	Hypesthesia
	Postoperative instability
Foraminal or extraforaminal stenosis	Facet joint injury
	Hydropertoneum
	Arterial bleeding of radicular artery
	Retroperitoneal fluid collection

conservative management, lumbar puncture and CSF drainage (CSF perioperative diversion) should be considered for 3–5 days. Autologous epidural blood patches may be another option for CSF leakage. Revision surgery for dural sutures should be considered in patients with an uncontrolled continuous CSF leak (Table 3).

Table 3. Incidental Durotomy and Its Management

Dural Tear	Treatment
Intraoperative recognized incidental durotomy	Durotomy size >1 cm
	Primary repair with suture or clips
	Durotomy size <1 cm
	Application of fibrin sealant patch
Intraoperative unrecognized incidental durotomy (CSF drainage through catheter and its bag)	Primary repair with suture or clips
	Bed rest more than 3 days
	Removal of drainage catheter insertion
	Autologous epidural blood patch
Postoperatively uncontrolled CSF leakage	Lumbar puncture and CSF drainage Revision and exploration surgery

Unsuccessful dura repair or untreated durotomy may lead to the development of a pseudo-meningocele.⁴⁸

Another form of incidental durotomy is an unrecognized intraoperative dural tear. Although no durotomy was identified during the biportal endoscopic procedure, CSF sometimes leaked into the epidural drainage bag postoperatively. If more than 200-fluid is drained into the drainage bag, CSF leakage should be suspected. In these cases, the epidural drainage catheter must be removed, and bed rest is maintained for 3–5 days postoperatively. Most unrecognized intraoperative durotomies are treated conservatively. However, if the patient complains of persistent headache and CSF collection inside the wound is suspected, lumbar puncture and CSF drainage should be considered. If an unrecognized intraoperative durotomy and CSF leak do not respond to these conservative treatments, revision and exploration surgery should be performed to identify the durotomy site and perform primary dura repair (Table 3).

Postoperative Epidural Hematoma. An epidural hematoma can occur postoperatively.^{5,15,16,21,23,27,31} A small postoperative epidural hematoma is usually asymptomatic or causes only mild symptoms (Figure 6A).²⁷ However, a large postoperative epidural hematoma can induce intractable radiating pain and neurological deficits, such as hypesthesia and motor weakness (Figure 6B).²¹ In such cases, postoperative magnetic resonance imaging should be performed and checked.²⁷ If a symptomatic epidural hematoma occurs, revision surgery should be considered (Figure 6B).^{5,21} An epidural hematoma can be effectively removed using revision biportal endoscopic surgery.^{23,25,27} If bleeding is difficult to control using a biportal endoscopic approach, biportal endoscopic surgery should be converted to microscopic surgery.

To prevent an epidural hematoma, ensuring meticulous bleeding control, applying a hemostatic matrix (gelatin-thrombin matrix) and inserting an epidural drainage catheter (Figure 7A and B)²⁹ have been attempted. The most significant risk factors for postoperative epidural hematoma are the use of anticoagulant or antiplatelet medications.^{5,25}

Increased Epidural Pressure. Continuous saline irrigation is necessary during biportal endoscopic spine surgery.^{17,41,45} However, it may increase the epidural pressure⁴¹ and ,subsequently, result in meningeal irritation, indicated by neck pain or headache.^{17,45} There are 2 possible mechanisms of increased epidural and intracranial pressure by continuous saline irrigation. The first is the direct pressure effect by continuous irrigation of saline. The second is direct cranial movement of irrigation fluid.⁴⁵ Prolonged operating time or poor patency of the irrigation fluid can increase epidural pressure during biportal endoscopic surgery.¹⁷ In the biportal endoscopic approach, continuous saline is passed from the endoscopic portal to the working portal. The patency of saline outflow and constant flow is important for maintaining epidural pressure.^{17,45} An infusion pump pressure >50 mmHg can increase the cervical epidural pressure in this surgery.^{17,45} Reducing the operation time and maintaining the pump pressure below 40 mmHg may be useful in reducing the complications caused by the increase in epidural pressure. Additionally, postoperative epidural Hemovac insertion

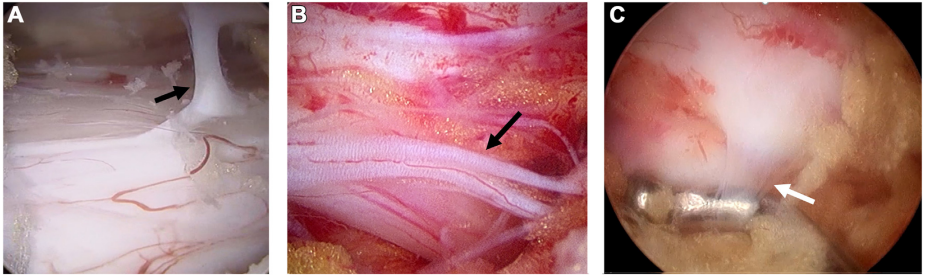


Figure 4. Anatomical cause of a dural tear. A posterior epidural ligament is connected between the dura and ligamentum flavum (A and B, black

arrow). A Hoffmann's ligament is connected between the dura and the disc or posterior longitudinal ligament (C, white arrow).

may help to drain excessive irrigation fluid.⁴⁵ Neck pain or headache can be improved with bed rest and conservative treatments.¹⁴

Neural Injury. Neural injury can occur during the biportal endoscopic approach, as it can occur in microsurgery. Neural injuries can be caused by surgical instruments, and retraction are usually temporary and not severe. The patients present with transient muscle weakness or hypesthesia.¹⁴ These symptoms are usually improved with conservative management, including physical therapy, bed rest, and medications.

Postoperative Instability and Facet Joint Injury. Postoperative segmental instability or facet joint injury is another complication of biportal endoscopic laminotomy.^{6,23,26} In addition, iatrogenic inferior articular process fractures can occur during laminotomy (Figure 8), and these complications are similar to those from conventional or microsurgical surgery. Therefore, preoperative

instability is a contraindication to biportal endoscopic lumbar decompression.

Specific Complications Related to Foraminal or Extraforaminal Stenosis Decompression. The biportal endoscopic paraspinous approach (Wiltse approach) has been used to treat foraminal and extraforaminal stenosis. The lateral locations of the 2 portals can induce hydroperitoneum. Irrigation fluid can leak into the abdominal cavity through the muscles. Therefore, endoscopic and surgical instruments must be placed around the foraminal ligament and bony structures, including the isthmus, transverse, and superior articular processes. If only muscle is seen, then the 2 ports may be located too laterally, and there is a high possibility of irrigation leakage into the abdominal cavity.¹⁰ Paracentesis should be considered for a symptomatic hydroperitoneum.¹⁰

Retropertoneal fluid collection is a biportal endoscopic extraforaminal decompression complication of the far-out syndrome.¹³ It can occur during decompression under the pelvic ala or

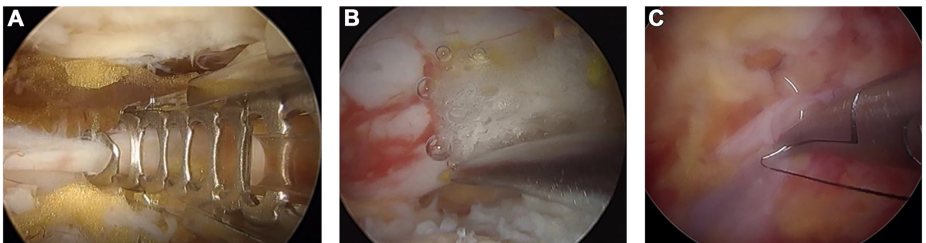
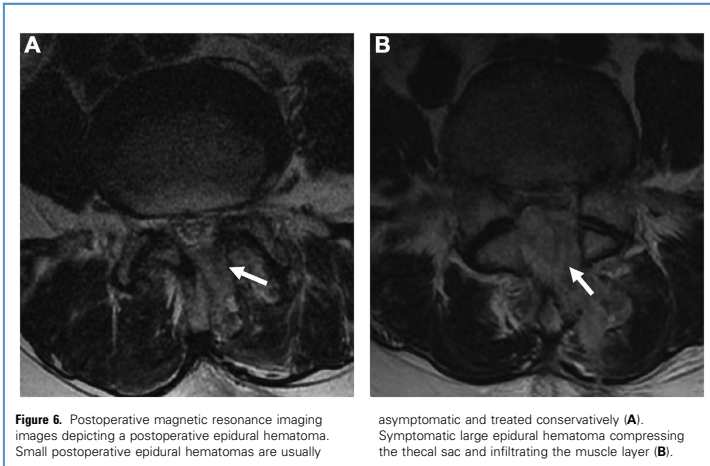


Figure 5. Intraoperative primary dura repair is performed with sutureless non-penetrating clips (A), TachoSil (B) and simple sutures (C).



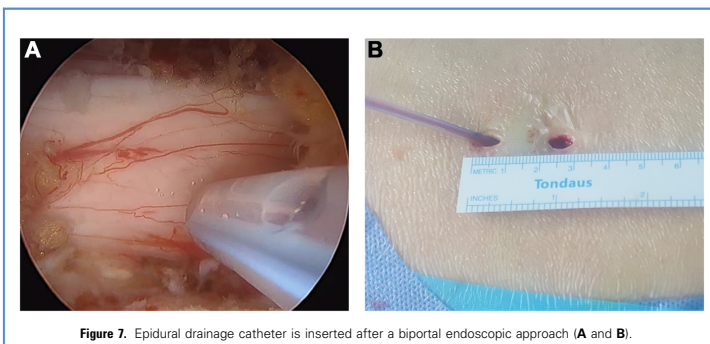
pseudoarthrosis between the ala and transverse process.¹³ Good drainage of irrigation fluid through the working portal is important for preventing a retroperitoneal fluid collection.¹³ Decompression around the ala area should be performed quickly to reduce the possibility of irrigation fluid leakage into the retroperitoneal area.¹³

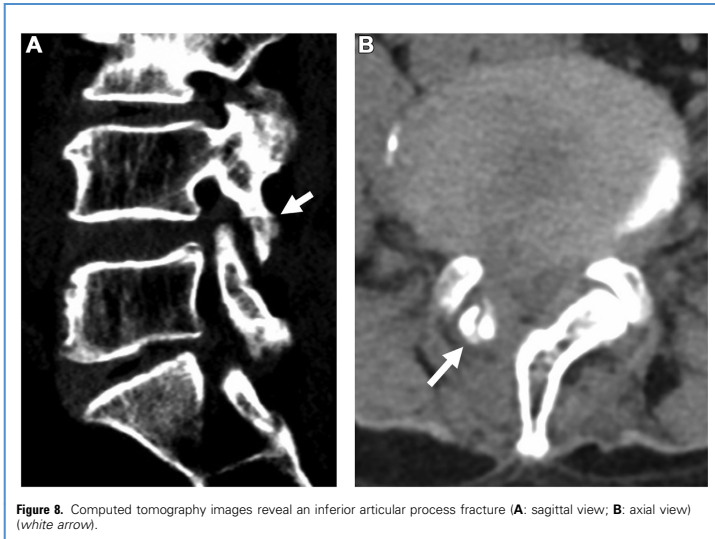
Arterial bleeding from the radicular branch of the segmental artery is another complication of the biportal endoscopic paraspinal approach (Figure 9A).^{6,10} Radicular arteries are found around the foramen and exiting nerve roots (Figure 9B). Therefore, when performing foraminal decompression,

attention should be paid to avoid arterial injury. Bleeding from the radicular artery can be controlled using radiofrequency ablation.

CONCLUSIONS

Central lumbar, lateral recess, foraminal, extraforaminal stenoses, and the far-out syndrome are favorable indications for a biportal endoscopic decompressive approach. In contrast, traumatic lesions, infections, neoplastic condition, instability, deformity, high-grade spondylolisthesis, and isthmic spondylolisthesis are

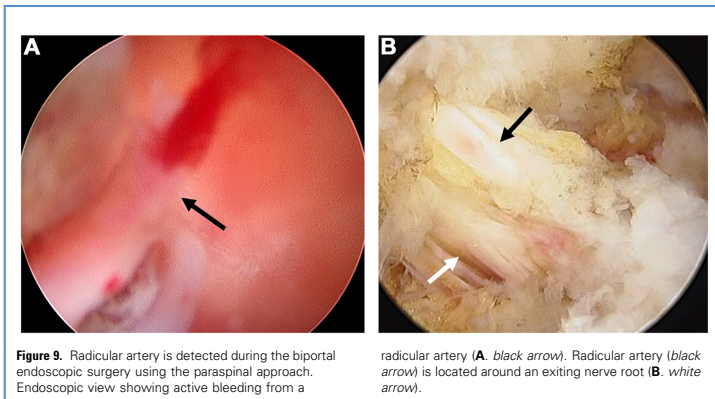




contraindications for a biportal endoscopic decompressive approach.

Complications of biportal endoscopic decompressive surgery are mostly minor. Dural tears and postoperative epidural hematomas are common complications, while increased epidural pressure from irrigation fluid and neural injury are

other complications that are observed. Abdominal fluid collection is a specific complication of the paraspinous approach of biportal endoscopy. Recognizing indications, contraindications, and complications may be necessary to perform biportal endoscopic decompressive surgery effectively.



CRediT AUTHORSHIP CONTRIBUTION STATEMENT

Dong Hwa Heo: Conceptualization, Methodology, Investigation, Resources, Writing – original draft, Writing – review & editing. **Dong Young Park:** Conceptualization, Investigation, Data curation, Writing – original draft, Writing – review & editing. **Hyun Jin Hong:** Conceptualization, Validation, Supervision, Project

administration. **Young Ho Hong:** Conceptualization, Validation, Supervision. **Hungtae Chung:** Validation, Supervision.

ACKNOWLEDGMENT

Dong Hwa Heo and Dong Young Park are co-first-authors and have contributed equally to the manuscript.

REFERENCES

- Heo DH, Lee DC, Park CK. Comparative analysis of three types of minimally invasive decompressive surgery for lumbar central stenosis: lumbar endoscopy, uniportal endoscopy, and microsurgery. *Neurosurg Focus*. 2019;46:E9.
- Heo DH, Quillo-Olvera J, Park CK. Can percutaneous lumbar endoscopic surgery achieve enough canal decompression for degenerative lumbar stenosis? Prospective case-control study. *World Neurosurg*. 2018;120:e684-e689.
- Heo DH, Eum JH, Jo JY, Chung H. Modified far lateral endoscopic transforaminal lumbar interbody fusion using a biportal endoscopic approach: technical report and preliminary results. *Acta Neurochir (Wien)*. 2021;163:1205-1209.
- Heo DH, Lee DC, Kim HS, Park CK, Chung H. Clinical results and complications of endoscopic lumbar interbody fusion for lumbar degenerative disease: a meta-analysis. *World Neurosurg*. 2021; 145:396-404.
- Ahn DK, Lee JS, Shin WS, Kim S, Jung J. Postoperative spinal epidural hematoma in a biportal endoscopic spine surgery. *Medicine (Baltimore)*. 2021;100:e24685.
- Ahn JS, Lee HJ, Choi DJ, Lee KY, Hwang SJ. Extraforaminal approach of biportal endoscopic spine surgery: a new endoscopic technique for transforaminal decompression and discectomy. *J Neurosurg Spine*. 2018;28:492-498.
- Aygun H, Abdulshafi K. Unilateral biportal endoscopic versus tubular microendoscopy in management of single level degenerative lumbar canal stenosis: a prospective study. *Clin Spine Surg*. 2021;34:E323-E328.
- Choi CM, Chung JT, Lee SJ, Choi DJ. How I do it? Biportal endoscopic spinal surgery (BESS) for treatment of lumbar spinal stenosis. *Acta Neurochir (Wien)*. 2016;158:459-463.
- Choi DJ, Kim JE. Efficacy of biportal endoscopic spine surgery for lumbar spinal stenosis. *Clin Orthop Surg*. 2019;11:82-88.
- Choi DJ, Kim JE, Jung JT, et al. Biportal endoscopic spine surgery for various foraminal lesions at the lumbosacral lesion. *Asian Spine J*. 2018;12: 569-573.
- Czigielczki G, Nagy Z, Padányi C, Bancerowski P. Biportal endoscopic technique in the treatment of spinal stenosis: early clinical experiences and results. *Neurol Res*. 2020;42:1085-1088.
- Heo DH, Ha JS, Lee DC, Kim HS, Chung HJ. Repair of incidental durotomy using sutureless nonpenetrating clips via biportal endoscopic surgery. *Global Spine J*. 2022;12:452-457.
- Heo DH, Sharma S, Park CK. Endoscopic treatment of extraforaminal entrapment of L5 nerve root (far out syndrome) by unilateral biportal endoscopic approach: technical report and preliminary clinical results. *Neurosurg*. 2019;16: 130-137.
- Hwa Eum J, Hwa Heo D, Son SK, Park CK. Percutaneous biportal endoscopic decompression for lumbar spinal stenosis: a technical note and preliminary clinical results. *J Neurosurg Spine*. 2016; 24:602-607.
- Ito Z, Shibayama M, Nakamura S, et al. Clinical comparison of unilateral biportal endoscopic laminectomy versus microendoscopic laminectomy for single-level laminectomy: a single-center, retrospective analysis. *World Neurosurg*. 2021;148:e581-e588.
- Kang MS, Heo DH, Chung HJ, et al. Biportal endoscopic posterior lumbar decompression and vertebroplasty for extremely elderly patients affected by lower lumbar delayed vertebral collapse with lumbosacral radiculopathy. *J Orthop Surg Res*. 2021;16:380.
- Kang MS, Park HJ, Hwang JH, Kim JE, Choi DJ, Chung HJ. Safety evaluation of biportal endoscopic lumbar discectomy: Assessment of cervical epidural pressure during surgery. *Spine (Phila Pa 1976)*. 2020;45:E1349-E1356.
- Kang SS, Kim JE, Choi DJ, Park EJ. Pseudomeningocele after biportal endoscopic spine surgery: a case report. *J Orthop*. 2020;18:1-4.
- Kang SS, Lee SC, Kim SK. A novel percutaneous biportal endoscopic technique for symptomatic spinal epidural lipomatosis: technical note and case presentations. *World Neurosurg*. 2019;129: 49-54.
- Kang T, Park SY, Kang CH, Lee SH, Park JH, Suh SW. Is biportal technique/endoscopic spinal surgery satisfactory for lumbar spinal stenosis patients? A prospective randomized comparative study. *Medicine (Baltimore)*. 2019;98:e15451.
- Kim JE, Choi DJ. Unilateral biportal endoscopic decompression by 30° endoscopy in lumbar spinal stenosis: technical note and preliminary report. *J Orthop*. 2018;15:366-371.
- Kim JE, Choi DJ. Unilateral biportal endoscopic spinal surgery using a 30° arthroscope for L5-S1 foraminal decompression. *Clin Orthop Surg*. 2018; 10:508-512.
- Kim JE, Choi DJ. Clinical and radiological outcomes of biportal endoscopic decompression by 30° arthroscopy in lumbar spinal stenosis: minimum 2-year follow-up. *Clin Orthop Surg*. 2018;10:328-336.
- Kim JE, Choi DJ. Bi-portal arthroscopic spinal surgery (BASS) with 30° arthroscopy for far lateral approach of L5-S1 - technical note. *J Orthop*. 2018; 15:354-358.
- Kim JE, Choi DJ, Kim MC, Park EJ. Risk factors of postoperative spinal epidural hematoma after biportal endoscopic spinal surgery. *World Neurosurg*. 2019;129:e324-e329.
- Kim JE, Choi DJ, Park EJ. Clinical and radiological outcomes of foraminal decompression using unilateral biportal endoscopic spine surgery for lumbar foraminal stenosis. *Clin Orthop Surg*. 2018; 10:439-447.
- Kim JE, Choi DJ, Park EJ. Evaluation of postoperative spinal epidural hematoma after biportal endoscopic spine surgery for single-level lumbar spinal stenosis: clinical and magnetic resonance imaging study. *World Neurosurg*. 2019;126: e786-e792.
- Kim JE, Choi DJ, Park EJ, et al. Biportal endoscopic spine surgery for lumbar spinal stenosis. *Asian Spine J*. 2019;13:334-342.
- Kim JE, Yoo HS, Choi DJ, et al. Effectiveness of gelatin-thrombin matrix sealants (Floseal®) on postoperative spinal epidural hematoma during single-level lumbar decompression using biportal endoscopic spine surgery: clinical and magnetic resonance image study. *Biomed Res Int*. 2020;2020: 4801641.
- Kim N, Jung SB. Percutaneous Unilateral biportal endoscopic spine surgery using a 30-degree arthroscope in patients with severe lumbar spinal stenosis: a technical note. *Clin Spine Surg*. 2019; 32:324-329.
- Kim W, Kim SK, Kang SS, Park HJ, Han S, Lee SC. Pooled analysis of unsuccessful percutaneous biportal endoscopic surgery outcomes from a multi-institutional retrospective cohort of 797 cases. *Acta Neurochir (Wien)*. 2020;162:279-287.
- Li C, Ju F, Li W, et al. Efficacy and safety of unilateral biportal endoscopy compared with microscopical decompression in the treatment of lumbar spinal stenosis: a protocol for systematic review and meta-analysis. *Medicine (Baltimore)*. 2021;100: e27970.
- Lin GX, Huang P, Kotharanurak V, et al. A systematic review of unilateral biportal endoscopic spinal surgery: preliminary clinical results and complications. *World Neurosurg*. 2019;125: 425-432.
- Min WK, Kim JE, Choi DJ, Park EJ, Heo J. Clinical and radiological outcomes between biportal endoscopic decompression and microscopic

- decompression in lumbar spinal stenosis. *J Orthop Sci.* 2020;25:371-378.
35. Pairuchvej S, Muljadi JA, Ho JC, Arirachakaran A, Kongtharvonskul J. Full-endoscopic (bi-portal or uni-portal) versus microscopic lumbar decompression laminectomy in patients with spinal stenosis: systematic review and meta-analysis. *Eur J Orthop Surg Traumatol.* 2020;30:595-611.
36. Park HJ, Kim SK, Lee SC, Kim W, Han S, Kang SS. Dural tears in percutaneous biportal endoscopic spine surgery: anatomical location and management. *World Neurosurg.* 2020;136: e578-e585.
37. Park MK, Son SK, Park WW, Choi SH, Jung DY, Kim DH. Unilateral biportal endoscopy for decompression of extraforaminal stenosis at the lumbosacral junction: surgical techniques and clinical outcomes. *Neurospine.* 2021;18:871-879.
38. Park SM, Kim GU, Kim HJ, et al. Is the Use of a Unilateral biportal endoscopic approach associated with rapid recovery after lumbar decompressive laminectomy? A preliminary analysis of a prospective randomized controlled trial. *World Neurosurg.* 2019;128:e709-e718.
39. Park SM, Kim HJ, Kim GU, et al. Learning curve for lumbar decompressive laminectomy in biportal Endoscopic spinal surgery using the cumulative summation test for learning curve. *World Neurosurg.* 2019;122:e1007-e1013.
40. Park SM, Park J, Jang HS, et al. Biportal endoscopic versus microscopic lumbar decompressive laminectomy in patients with spinal stenosis: a randomized controlled trial. *Spine J.* 2020;20: 156-165.
41. Pranata R, Lim MA, Vania R, Joly J. Biportal endoscopic spinal surgery versus microscopic decompression for lumbar spinal stenosis: a systematic review and meta-analysis. *World Neurosurg.* 2020;138:e450-e458.
42. Xie X, Zhang G, Liu N. Clinical effect of unilateral biportal endoscopy in the treatment of lumbar diseases: a systematic review and meta-analysis. *Widochir Imne Tech Maloinuazujne.* 2022;17:61-68.
43. Kang KB, Shin YS, Seo EM. Endoscopic spinal surgery (BESS and UESS) versus microscopic surgery in lumbar spinal stenosis: systematic review and meta-analysis. *Global Spine J.* 2022; 21925682221083271.
44. Liu X. A novel biportal full endoscopy technique for lumbar lateral recess stenosis: technical report. *Clin Spine Surg.* 2019;32:51-56.
45. Kang T, Park SY, Lee SH, Park JH, Suh SW. Assessing changes in cervical epidural pressure during biportal endoscopic lumbar discectomy. *J Neurosurg Spine.* 2020;1-7.

Conflict of interest statement: The authors declare that the article content was composed in the absence of any commercial or financial relationships that could be construed as a potential conflict of interest.

Received 6 August 2022; accepted 5 September 2022

Citation: *World Neurosurg.* (2022) 168:411-420.

<https://doi.org/10.1016/j.wneu.2022.09.023>

Journal homepage: www.journals.elsevier.com/world-neurosurgery

Available online: www.sciencedirect.com

1878-8750/\$ - see front matter © 2022 Elsevier Inc. All rights reserved.

Neurospine 2020;17(Suppl 1):S129-137.
<https://doi.org/10.14245/ns.2040178.089>

Neurospine
pISSN 2586-6583 eISSN 2586-6591



Review and Technical Note

Corresponding Author

Dong Chan Lee

<https://orcid.org/0000-0001-5614-4490>

Department of Neurosurgery, Wiltse
Memorial Hospital, 560 Gyeongsu-daero,
Dongan-gu, Anyang 14112, Korea
E-mail: surgicel@hanmail.net

Received: April 3, 2020

Revised: June 7, 2020

Accepted: June 8, 2020

*Dong Hwa Heo and Young Ho Hong
contributed equally to this study as
co-first authors.

See the commentary "Why Should We
Perform Endoscopic Spine Surgery?" via
<https://doi.org/10.14245/ns.2040374.187>.



This is an Open Access article distributed under
the terms of the Creative Commons Attribution
Non-Commercial License (<https://creativecommons.org/licenses/by-nc/4.0/>) which permits
unrestricted non-commercial use, distribution,
and reproduction in any medium, provided the
original work is properly cited.

Copyright © 2020 by the Korean Spinal
Neurosurgery Society

Technique of Biportal Endoscopic Transforaminal Lumbar Interbody Fusion

Dong Hwa Heo^{1,*}, Young Ho Hong^{2,*}, Dong Chan Lee³, Hun Jae Chung¹,
Choon Keun Park³

¹Department of Neurosurgery, Endoscopic Spine Surgery Center, Seoul Bumin Hospital, Seoul, Korea

²Department of Neurosurgery, Bundang Barunseong Hospital, Seongnam, Korea

³Department of Neurosurgery, Wiltse Memorial Hospital, Anyang, Korea

Biportal endoscopic transforaminal lumbar interbody fusion (TLIF) may have advantages of minimally invasive fusion surgery as well as those of endoscopic surgery. The purpose of this study was to present the biportal endoscopic TLIF technique along with video presentations and a review of the literature on this technique. Basically, the biportal endoscopic TLIF technique is similar to minimally invasive TLIF with a tubular retractor. There were 2 options in the biportal endoscopic TLIF procedures. The first was the insertion of one long TLIF cage and the other was the insertion of 2 short posterior lumbar interbody fusion (PLIF) cages. After the interbody fusion procedures, percutaneous pedicle screw fixation was performed. Biportal endoscopic TLIF achieved complete neural decompression through laminectomy and facetectomy like conventional TLIF. Endplate preparation was performed completely under a clear and magnified endoscopic view. It was also feasible to insert a large TLIF cage or 2 cages for PLIF without exiting nerve root injury. Biportal endoscopic TLIF might have the advantages of endoscopic surgery as well as minimally invasive fusion surgery. Direct neural decompression, endplate preparation under endoscopic guidance, and the insertion of a large TLIF cage or 2 PLIF cages may be the merits of biportal endoscopic lumbar fusion procedures.

Keywords: Endoscopy, Fusion, Lumbar, Minimally invasive surgery

INTRODUCTION

Minimally invasive (MIS) spine surgery has the advantages of early recovery and the preservation of normal structures.¹ MIS spine procedures include percutaneous pain procedures, endoscopic spine surgery, microsurgery with tubular retractor systems, lateral lumbar interbody fusion surgeries, and transforaminal lumbar interbody fusion (TLIF) surgeries.¹ Recently, endoscopic lumbar interbody fusion procedures have been attempted for lumbar degenerative disease and instability.²⁻⁶ Regarding the instrumentation systems, there are 2 kinds of endoscopic lumbar interbody fusion surgeries. The first is uniportal endoscopic lumbar interbody fusion and the other is biportal endoscopic lumbar interbody fusion.^{5,6} With regard to surgical

approaches or corridor, one approach is a trans-Kambin approach using uniportal endoscopic surgery⁴⁻¹⁰ and the other is a posterolateral approach like MIS TLIF using uniportal or biportal endoscopic surgery.^{5,11,12} The trans-Kambin approach is similar to transforaminal endoscopic lumbar discectomy via the Kambin triangle. And, the technique of posterolateral endoscopic TLIF is similar to MIS TLIF involving tubular retractor systems.^{4,5,12}

Although endoscopic TLIF by the trans-Kambin approach may be less invasive than the posterolateral approach, the trans-Kambin approach might exhibit a higher possibility of exiting nerve root irritation or injury and limitations in direct neural decompression compared to the posterolateral approach.^{7,13} The biportal endoscopic TLIF technique uses a posterolateral ap-

proach similar to MIS TLIF involving tubular retractor systems. Through biportal endoscopic procedures, it was feasible to perform direct neural decompression through a laminectomy, contralateral sublaminar decompression, discectomy, foraminotomy, and facetectomy as well as indirect decompression by disc space restoration, and the reduction of spondylolisthesis.^{4,5,11,14-16} Also, the endoscopic approach is the least invasive and may preserve the normal structure.^{6,17} Biportal endoscopic TLIF is hypothesized to have advantages of minimally invasive fusion surgery as well as those of endoscopic surgery.^{5,11} Herein, we present the biportal endoscopic TLIF technique along with a video presentation and review of the literature on this technique.

SURGICAL PROCEDURES

We present 2 illustrated cases with surgical videos. The lumbar interbody fusion procedures were performed by biportal endoscopic surgery^{5,11,18} (Fig. 1). There were 2 options of biportal endoscopic lumbar interbody fusion surgical procedures performed. The first was a cage insertion procedure (Supplementary video clip 1) and the second was a 2-cage insertion



Fig. 1. Overview of biportal endoscopic lumbar interbody fusion. Usually, the dominant hand was used for the working portal and the nondominant hand was used for the endoscopic portal.

procedure (Supplementary video clip 2).

1. Surgical Instruments

The biportal endoscopy systems include a console, camera, endoscopy irrigation equipment, and tool kits, which are essential for the surgery. A waterproof surgical drape is essential for endoscopic spine surgeries and must be prepared. Also, a radiofrequency (RF) console and RF probes should be prepared for tissue cauterization and bleeding control. General spinal operation instruments for MIS TLIF were used. Angled curettes are helpful for endplate preparation of the contralateral side. A long straight TLIF cage (width, 11 mm; length, 34 mm; height, 9–18 mm) was usually used for interbody fusion, and short-length PLIF cages (width, 11 mm; length, 25 mm; height, 9–18 mm) are available. After the interbody fusion procedures, percutaneous pedicle screws were inserted under C-arm fluoroscopic guidance.

2. Anesthesia and Position

We prefer general endotracheal anesthesia. Epidural anesthesia with intravenous sedation is also available for single-level fusion. The patient is in a prone position during the interbody fusion procedure and insertion of the percutaneous pedicle screws. A Jackson table or a Wilson frame is used for this procedure.

3. Surgical Procedures

First, we make 2 skin incisions over the ipsilateral pedicles for

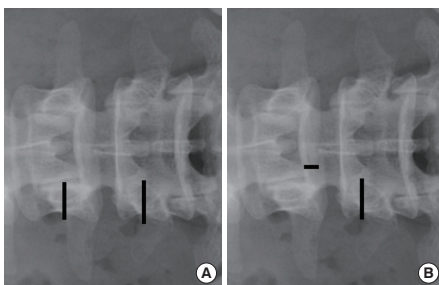


Fig. 2. Two skin incision points for biportal endoscopic transforaminal lumbar interbody fusion. (A) Ordinary skin incision points were made over the pedicle area in the anteroposterior x-ray view. (B) Modified skin incision points. (B) An endoscopic portal incision was made near the intervertebral space for good visualization of the superior and inferior endplates.

decompression and insertion of the cages under C-arm fluoroscopic guidance (Fig. 2). If the dominant radicular pain site was in the leg or buttock, biportal endoscopic approaches are tried at the dominant pain side. Modified skin incisions, different from routine incisions, were used. Typically, a 5-mm-long skin incision for an endoscopic portal is made close to the disc space of the medial pedicular line and the other skin incision is made on the working portal over the pedicle (Fig. 2B). These 2 skin incisions are also used for ipsilateral percutaneous pedicle screw insertion. A small-sized endoscopic portal is used for passing a drainage catheter. The purpose of the modified skin incision is to achieve optimal visualization of the superior and inferior endplates during endplate preparation.

Serial dilators are inserted through the working portals. The lower portion of the cranial lamina is gently dissected using a dissector under C-arm fluoroscopic guidance. The docking point of the endoscopic and working portals is over the lower portion of the cranial lamina. Ipsilateral unilateral laminotomy with an ipsilateral facetectomy is performed. Ipsilateral laminotomy of the upper and lower laminae is performed until full exposure of the ligamentum flavum from the proximal end to the distal end. The unilateral inferior articular process is removed using Kerrison punches and osteotomes. The superior articular process is partially removed. In cases with foraminal stenosis or foraminal disc herniation, the superior articular process is removed for decompression of the exiting nerve root. Facet and laminae bone chips are collected for fusion materials.

The ligamentum flavum is removed for ipsilateral traversing nerve root decompression (Fig. 3A). The contralateral side of the ligamentum flavum is completely removed for decompression of the central canal and contralateral traversing nerve root (Fig. 3B, C). The medial portion of the contralateral facet joint is fully released for the reduction of spondylolisthesis or distraction of the intervertebral disc space. Annulus fibrosus of the disc is incised using a blunt knife or an RF probe with a small diameter. The disc materials are removed using pituitary forceps and shavers. We perform complete endplate preparation under the endoscopic view. A small-diameter shaver is inserted and rotated in disc space. Larger shavers are used serially for endplate preparation. The endoscopy of biportal endoscopic systems can be inserted into disc space. The dissection plane between the cartilaginous endplate and osseous endplate is explored under a clear, magnified endoscopic view. The cartilaginous endplate is separated from the osseous endplate using angled dissectors and curettes (Fig. 4A). Only the cartilaginous endplate can be completely removed from the osseous endplate under a clear endoscopic view

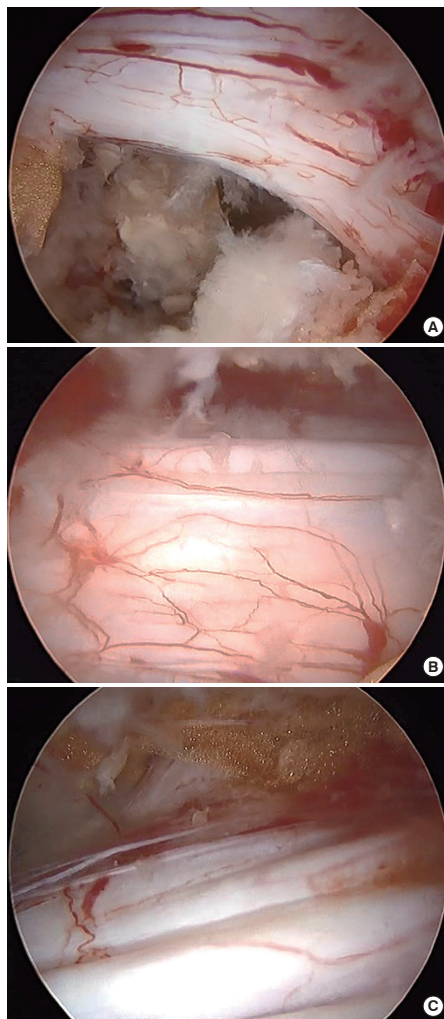


Fig. 3. Biportal endoscopic view after neural decompression. (A) Ipsilateral traversing nerve root. (B) Central canal. (C) Contralateral traversing nerve root.

(Fig. 4B). The intervertebral disc space is distracted by serial insertion of cage trials or serial dilators. The contralateral side of endplate is prepared using angled curettes and an upward angled

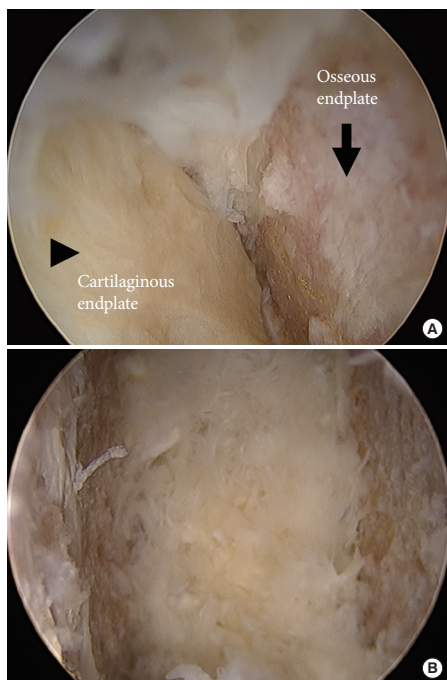


Fig. 4. Endoscopic images during endplate preparation. (A) The cartilaginous endplate (arrowhead) was separated from the osseous endplate (arrow). (B) Final view of the endoscopic endplate preparation. The cartilaginous endplate was completely removed without injury to the osseous endplate.

pituitary. For good visualization of the contralateral endplate, a 30° endoscopy is used. Sometimes we change the endoscopy from 0° to 30°. After confirmation of complete endplate preparation under endoscopic view, allogeneous or autogenous bone chips are inserted using a specialized funnel under C-arm fluoroscopic guidance (Fig. 5A, B). Continuous saline irrigation is stopped during the insertion of fusion materials.

Finally, a long TLIF cage is inserted through the working portal after dura retraction. C-arm fluoroscopy was used during cage insertion. The cage is repositioned obliquely or transversely using a cage pusher device. If we use short PLIF cages, we usually put in 2 cages for interbody fusion. The first cage is obliquely and deeply inserted into the midline or contralateral side. After insertion of the first cage, the second short cage is inserted. The spe-

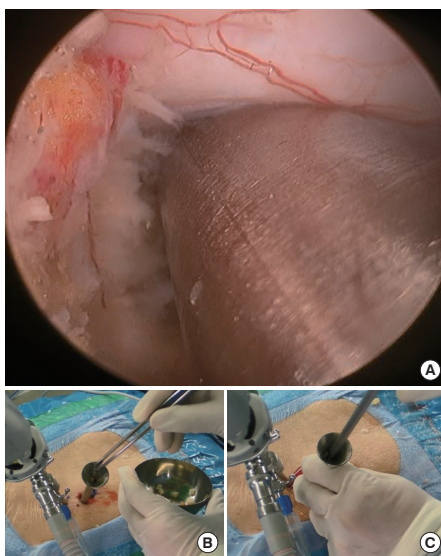


Fig. 5. The fusion materials were inserted into the intervertebral space using a funnel before cage insertion (A. endoscopic view). (B, C) Overview of fusion material insertion using a funnel and an impactor.

cialized dura retractor is deeply inserted for protection, covering the dura as well as the first inserted cage. Since the remnant of the superior articular process can protect the exiting nerve root during cage insertion, the ipsilateral exiting nerve root is decompressed after cage insertion. Finally, the exiting nerve root is additionally decompressed in cases with foraminal lesions with exiting root indentations. A drainage catheter is inserted to prevent postoperative epidural hematoma.

CASE PRESENTATIONS

1. Case 1 (1 cage insertion technique)

A 56-year-old female patient presented with back pain, claudication, and radicular pain in both the legs. The more painful side was the right leg. The preoperative magnetic resonance imaging (MRI) and x-ray images demonstrated degenerative spondylolisthesis with stenosis at L4–5 (Fig. 6). We performed biportal endoscopic TLIF of the L4–5 level. Biportal endoscopic TLIF was performed with the right approach. The postoperative MRI showed a reduction in spondylolisthesis and good de-

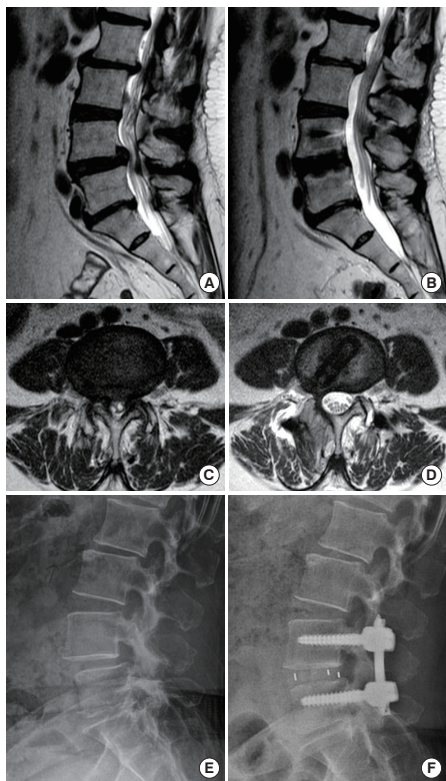


Fig. 6. Radiologic images of a 56-year-old female patient. (A) The preoperative magnetic resonance images show degenerative spondylolisthesis of L4–5. (B) After biportal endoscopic transforaminal lumbar interbody fusion (TLIF), the spondylolisthesis was well-resolved. Central stenosis of L4–5 (C) was decompressed after surgery (D). (E) The preoperative x-ray also revealed spondylolisthesis of L4–5. (F) The postoperative x-ray showed the large TLIF cage and percutaneous pedicle screw inserted.

compression status of the central stenosis (Fig. 6). Postoperatively, the patient's symptoms were significantly improved. (Supplementary video clip 1).

2. Case 2 (2 cages insertion technique)

A 55-year-old female patient presented with radicular pain in both legs and neurological intermittent claudication. The pre-

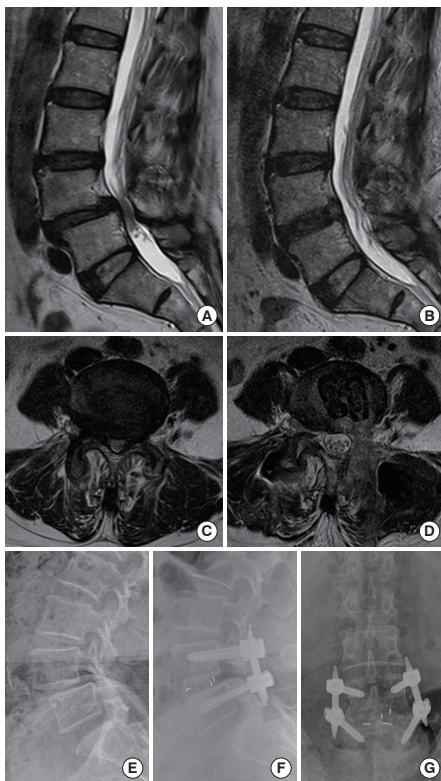


Fig. 7. A 55-year-old female patient presented with pain with claudication in both legs. (A) The preoperative magnetic resonance imaging showed degenerative spondylolisthesis with central stenosis at L4–5. (B) This patient received biportal endoscopic transforaminal lumbar interbody fusion using the 2-cage insertion technique. Preoperative spondylolisthesis (A) and central stenosis (C) were significantly resolved postoperatively (B, D). (E) The preoperative x-ray image demonstrates degenerative spondylolisthesis of L4–5. (F, G) The postoperative x-ray images reveal a reduction in spondylolisthesis and the presence of 2 inserted cages. The pain was significantly improved after surgery.

operative MRI and x-ray images revealed degenerative spondylolisthesis with central and foraminal stenosis at L4–5 (Fig. 7). The patient underwent biportal endoscopic TLIF with a 2-cage insertion technique. The postoperative MRI and x-ray images

demonstrated a significant reduction in spondylolisthesis and good decompression of the neural structures (Fig. 7). The pain was resolved after the biportal endoscopic TLIF (Supplementary video clip 2).

DISCUSSION

Conceptually, this biportal endoscopic TLIF approach might have the advantages of both MIS fusion and endoscopic surgery. Theoretically, biportal endoscopic fusion surgeries may be suitable for endoscopic assistant fusion surgery. However, the term seems to be confused with air-based microendoscope-assisted fusion surgeries. Microendoscope-assisted TLIF was performed using tubular retractor systems. Therefore, we suggested that the term of endoscopic TLIF may be better than endoscope-assisted TLIF in the water-based endoscopic lumbar interbody fusion surgeries. This technique is based on conventional microscopic TLIF procedures.¹ Therefore, it is possible to achieve the direct decompression of neural tissue by biportal endoscopic TLIF,^{14,15} and insert large, long TLIF cages, like in MIS TLIF.^{4,5} The contralateral nerve root could be fully decompressed through the contralateral sublaminar approach.^{4,14} The contralateral sublaminar approach for contralateral nerve root decompression is one of the advantages of the biportal endoscopic approach.^{3,15} Also, indirect decompression was achieved by the reduction of spondylolisthesis and the restoration of the collapsed disc space. Since we could insert a large, long cage for conventional TLIF, the narrowed disc space was distracted by the insertion of a large-sized cage.⁵

The direct decompression of central canal and nerve roots was performed by removing the ligamentum flavum, and by laminectomy and facetectomy.^{5,14} Since there was a possibility of exiting nerve root injury during insertion of a cage, we usually decompressed the ipsilateral exiting nerve root after a cage insertion. The lateral remnant of the superior articular process imparted protection to the exiting nerve root during cage insertion. If patients had severe foraminal stenosis or foraminal disc herniation, we performed direct foraminal decompression through a total facetectomy.

The distraction of narrowed disc space was important to cage insertion and for performing indirect decompression. The placement of serial dilators or cages trials into the disc space led to disc space distraction without endplate injury. It was further hypothesized that contralateral medial facet release may be important for the reduction of spondylolisthesis and the restoration of disc height. We performed contralateral facet release

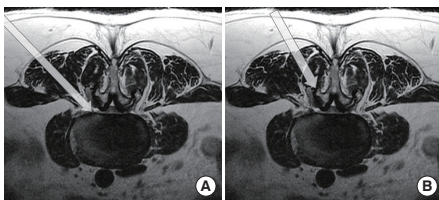


Fig. 8. Two types of endoscopic transforaminal lumbar interbody fusion (TLIF). The trans-Kambin approach (A) and the posterolateral approach (B). The trans-Kambin approach was similar to transforaminal lumbar discectomy and the posterolateral approach was similar to minimally invasive TLIF with tubular retractor systems.

through complete removal of the contralateral ligamentum flavum around the facet joint and partial removal of the contralateral superior articular process. Some clinicians prefer to insert 2 cages rather than 1 cage. By using the biportal endoscopic approach, it is possible to insert 2 PLIF cages via a unilateral biportal endoscopic approach.

Two types of endoscopic lumbar interbody fusion surgeries can be used, depending on the surgical approaches (Fig. 8, Table 1). The first is the trans-Kambin approach (Fig. 8A),^{6,7,13,19} and the other is a posterolateral approach (Fig. 8B).^{2,4,11} The trans-Kambin endoscopic TLIF procedure was performed via Kambin's triangle, like fully endoscopic transforaminal lumbar discectomy. Endplate preparation and cage insertion were performed via Kambin's triangle.⁶ The posterolateral approach is similar to MIS TLIF surgery. The posterolateral endoscopic TLIF approach is based on MIS TLIF (Fig. 8B).^{5,11,18} Direct decompressive procedures, including ipsilateral laminotomy and total facetectomy, were performed in the posterolateral endoscopic TLIF approach. Although endoscopic TLIF through the trans-Kambin approach is less invasive than the posterolateral approach, the disadvantage of the trans-Kambin approach is exiting nerve root injury. Previous studies reported the frequency of exiting nerve irritation or injury from 0% to 22% in the trans-Kambin approach in uniportal endoscopic TLIF.^{7,19} Since a cage is inserted through Kambin's triangle, there might be a high possibility of exiting nerve root injury during insertion. Direct decompression and endplate preparation may also be limited in the trans-Kambin approach.

In contrast, the posterolateral approach might have a lower possibility of exiting nerve root injury during cage insertion. Before cage insertion, full neural decompression procedures were performed. Enough space for cage insertion was made

Table 1. Comparison of 2 types of endoscopic TLIF

Variable	Trans-Kambin approach	Posterolateral approach
Bone work	Ipsilateral superior articular process (Foraminoplasty)	Ipsilateral superior articular process and inferior articular process Ipsilateral lamina
Direct decompression		
Ipsilateral	Possible	Possible
Contralateral	Impossible	Possible
Indirect decompression	Possible	Possible
Endplate preparation	Direct sighted under endoscopic view	Direct sighted under endoscopic view
Cage insertion	One cage	One or 2 cages
Exiting nerve root injury	Slightly higher than the posterolateral approach	A little
Similar surgical approach	Transforaminal endoscopic discectomy	Minimally invasive TLIF

TLIF, transforaminal lumbar interbody fusion (trans-Kambin approach versus posterolateral approach).

Table 2. Summary of publications of biportal endoscopic lumbar interbody fusion

Study	Publication year	Study design	Cases	Follow-up (mo), mean \pm SD	Clinical outcomes	Perioperative complications
Heo et al. ⁵	2017	Cases series	69 Cases	13.5 \pm 7.1	Improvement of VAS and ODI	Dura tear (2), hematoma (3)
Kim and Choi ¹⁸	2018	Cases series	14 Cases		Improvement of VAS	L5 root palsy (1), dura tear (1)
Heo et al. ⁴	2019	Cases control study	23 Cases (biportal), 45 cases (microscopic)	13.4 \pm 2.5	Improvement of VAS and ODI	Hematoma (1)
Park et al. ¹¹	2019	Cases control study	71 Cases (biportal), 70 cases (conventional)	17.1 \pm 4.9	Improvement of VAS and ODI	Dura tear (3), infection (1) Hematoma (1)
Ahn et al. ²	2019	Systemic review	-	-	-	-

SD, standard deviation; VAS, visual analog scale; ODI, Oswestry Disability Index.

through facetectomy and laminectomy. We could also achieve complete direct decompression of the central canal and nerve roots, like in MIS TLIF. We could place the cages safely during biportal endoscopic TLIF.⁵ This posterolateral approach was available in biportal or uniportal endoscopic systems.⁵

Five articles on biportal endoscopic fusion surgeries have been published (Table 2).^{2,4,5,11,18} Two articles reported the technique and preliminary clinical results. These 2 articles focused on the technical aspect of biportal endoscopic TLIF.^{5,18} Additionally, early favorable clinical outcomes were presented. Another 2 articles presented comparative studies of biportal endoscopic TLIF with conventional PLIF or TLIF surgeries.^{4,11} Compared to conventional fusion surgeries or MIS fusion surgeries, the benefits of biportal endoscopic fusion were less blood loss and postoperative pain. These advantages of biportal endoscopic TLIF may lead to early recovery and early return to work after surgery. Moreover, the combination of biportal endoscopic

ic fusion surgery with enhanced recovery after surgery programs might reduce complications and shorten hospital stays after surgery.⁴ However, biportal endoscopic fusion surgeries were more difficult than conventional open surgery or microscopic surgery with a tubular retractor. A comparison of operation time may offer clues to the technical difficulty. The operation time for biportal endoscopic fusion surgeries was longer than that for conventional PLIF and TLIF surgeries.^{4,11} Moreover, there were complications related to biportal endoscopic TLIF. Durotomy, postoperative epidural hematoma, infections, and nerve root palsy have been reported in previously published articles (Table 2).^{2,4,5,11,18} Although the reported complications related to biportal endoscopic TLIF were mainly minor, endoscopic fusion procedures are very difficult and have the possibility of major complications. Incomplete surgery may be another problem of endoscopic fusion surgeries. Therefore, we strongly recommend that endoscopic fusion surgeries should

be tried after extensive experience with endoscopic surgeries, such as endoscopic decompression and endoscopic discectomy using uniportal or biportal endoscopy.

The last article was a review article about endoscopic TLIF, including biportal as well as uniportal endoscopic systems.² There were only short-term clinical outcomes of endoscopic TLIF and no randomized case-control studies of endoscopic lumbar fusions. Consequently, this review article was not able to conclude the advantages and superiority of endoscopic TLIF.³

Compared with MIS TLIF, biportal endoscopic approaches may afford better endplate preparation. We could insert an endoscope into the intervertebral disc space during endplate preparation. It was possible to precisely demonstrate the condition of the endplate via endoscopy. The cartilaginous endplate was separated and removed from the osseous endplate under a magnified endoscopic view.⁴ General instruments used for endplate preparation, such as an angled curette, box designed curette, and angled pituitary forceps, were available to perform complete endplate preparation under endoscopic guidance. Thirty-degree endoscopy and angled instruments may be useful for contralateral disc removal and endplate preparation. Endoscopy-guided endplate preparation may prevent osseous endplate injury during endplate preparation and subsidence of a cage. One of the important purposes of lumbar fusion surgery is the restoration of segmental lordosis. Since the biportal endoscopic TLIF technique achieved complete facetectomy and could accommodate the insertion of a large TLIF cage, this biportal endoscopic approach might be as good as MIS TLIF in restoring segmental lordosis.

Biportal endoscopic TLIF exhibited similarity with MIS TLIF with a tubular retractor and has several advantages of endoscopic approaches. However, a long-term follow-up study and randomized case-control studies should be performed.

CONCLUSION

Herein, we present the technique and literature review of biportal endoscopic TLIF. Biportal endoscopic TLIF might have the advantages of MIS fusion surgeries as well as those of the endoscopic approach. Direct decompression, endoscopically guided endplate preparation, and the insertion of large cages may be the merits of biportal endoscopic lumbar fusion procedures. To reveal the efficacy and clinical usefulness of the biportal technique, long-term blinded, randomized case-control studies are needed.

POINTS OF THE SURGICAL TECHNIQUE

1. In the biportal endoscopic TLIF technique, direct decompression was first performed via unilateral laminotomy with bilateral decompression.
2. The inferior articular process, as well as the superior articular process, was removed for safe insertion of a large cage.
3. The cartilaginous endplate should be completely removed from the osseous endplate for interbody fusion under a magnified, clear endoscopic view. It was possible to demonstrate endplate conditions during the endplate preparation procedure via endoscopy.
4. A large volume of fusion materials, including auto-bone, allo-bone, and demineralization bone matrix, should be inserted via a funnel before insertion of the cage.
5. The release of the medial part of the contralateral facet joint may be helpful for disc space distraction and the reduction of spondylolisthesis.
6. Percutaneous pedicle screw insertion was subsequently performed after the interbody fusion procedures.

CONFLICT OF INTEREST

The authors have nothing to disclose.

SUPPLEMENTARY MATERIALS

Supplementary video clip 1-3 can be found via <https://doi.org/10.14245/ns.2040178.089.v.1>, <https://doi.org/10.14245/ns.2040178.089.v.2>, and <https://doi.org/10.14245/ns.2040178.089.v.3>.

Supplementary video clip 1. Left-sided biportal endoscopic TLIF with the insertion of one TLIF cage. Video clip 2. Left-sided biportal endoscopic TLIF with the insertion of 2 PLIF cages. Video clip 3, the author's interview and overall surgical procedures.

REFERENCES

1. Holly LT, Schwender JD, Rouben DP, et al. Minimally invasive transforaminal lumbar interbody fusion: indications, technique, and complications. *Neurosurg Focus* 2006;20:E6.
2. Ahn Y, Youn MS, Heo DH. Endoscopic transforaminal lumbar interbody fusion: a comprehensive review. *Expert Rev Med Devices* 2019;16:373-80.
3. Brusko GD, Wang MY. Endoscopic lumbar interbody fusion. *Neurosurg Clin N Am* 2020;31:17-24.

4. Heo DH, Park CK. Clinical results of percutaneous biportal endoscopic lumbar interbody fusion with application of enhanced recovery after surgery. *Neurosurg Focus* 2019;46:E18.
5. Heo DH, Son SK, Eum JH, et al. Fully endoscopic lumbar interbody fusion using a percutaneous unilateral biportal endoscopic technique: technical note and preliminary clinical results. *Neurosurg Focus* 2017;43:E8.
6. Wang MY, Grossman J. Endoscopic minimally invasive transforaminal interbody fusion without general anesthesia: initial clinical experience with 1-year follow-up. *Neurosurg Focus* 2016;40:E13.
7. Morgenstern C, Yue JJ, Morgenstern R. Full percutaneous transforaminal lumbar interbody fusion using the facet-sparing, trans-Kambin approach. *Clin Spine Surg* 2020;33:40-5.
8. Ao S, Zheng W, Wu J, et al. Comparison of preliminary clinical outcomes between percutaneous endoscopic and minimally invasive transforaminal lumbar interbody fusion for lumbar degenerative diseases in a tertiary hospital: is percutaneous endoscopic procedure superior to MIS-TLIF? A prospective cohort study. *Int J Surg* 2020;76:136-43.
9. Wu J, Liu H, Ao S, et al. Percutaneous endoscopic lumbar interbody fusion: technical note and preliminary clinical experience with 2-year follow-up. *Biomed Res Int* 2018;2018:5806037.
10. Lee SH, Erken HY, Bae J. Percutaneous transforaminal endoscopic lumbar interbody fusion: clinical and radiological results of mean 46-month follow-up. *Biomed Res Int* 2017;2017:3731983.
11. Park MK, Park SA, Son SK, et al. Clinical and radiological outcomes of unilateral biportal endoscopic lumbar interbody fusion (ULIF) compared with conventional posterior lumbar interbody fusion (PLIF): 1-year follow-up. *Neurosurg Rev* 2019;42:753-61.
12. Kim HS, Wu PH, Jang IT. Technical note on Uniportal full endoscopic posterolateral approach transforaminal lumbar interbody fusion with reduction for grade 2 spondylolisthesis. *Interdiscip Neurosurg* 2020;21:100712. <https://doi.org/10.1016/j.inat.2020.100712>.
13. Lewandrowski KU, Ransom NA, Ramírez León JF, et al. The concept for a standalone lordotic endoscopic wedge lumbar interbody fusion: the LEW-LIF. *Neurospine* 2019;16: 82-95.
14. Heo DH, Lee DC, Park CK. Comparative analysis of three types of minimally invasive decompressive surgery for lumbar central stenosis: biportal endoscopy, uniportal endoscopy, and microsurgery. *Neurosurg Focus* 2019;46:E9.
15. Heo DH, Quillo-Olvera J, Park CK. Can percutaneous biportal endoscopic surgery achieve enough canal decompression for degenerative lumbar stenosis? Prospective case-control study. *World Neurosurg* 2018;120:e684-9.
16. Heo DH, Sharma S, Park CK. Endoscopic treatment of extraforaminal entrapment of L5 nerve root (far out syndrome) by unilateral biportal endoscopic approach: technical report and preliminary clinical results. *Neurospine* 2019;16:130-7.
17. Shen J. Fully endoscopic lumbar laminectomy and transforaminal lumbar interbody fusion under local anesthesia with conscious sedation: a case series. *World Neurosurg* 2019;127:e745-50.
18. Kim JE, Choi DJ. Biportal endoscopic transforaminal lumbar interbody fusion with arthroscopy. *Clin Orthop Surg* 2018;10:248-52.
19. Jin M, Zhang J, Shao H, et al. Percutaneous transforaminal endoscopic lumbar interbody fusion for degenerative lumbar diseases: a consecutive case series with mean 2-year follow-up. *Pain Physician* 2020;23:165-74.



ELSEVIER



The Spine Journal 21 (2021) 2066–2077

The SPINE
JOURNAL

Clinical Study

Minimally invasive transforaminal lumbar interbody fusion using the biportal endoscopic techniques versus microscopic tubular technique

Min-Seok Kang, MD^{a, #}, Ki-Han You, MD^{b, #}, Jun-Young Choi, MD^b, Dong-Hwa Heo, MD^c, Hoon-Jae Chung, MD^a, Hyun-Jin Park, MD^{b, *}

^a Department of Orthopedic Surgery, Endoscopic Spine Surgery Center, Bumil Hospital Seoul, Seoul, Republic of Korea, 07590

^b Department of Orthopedic Surgery, Spine Center, Kangnam Sacred Heart Hospital, Hallym University College of Medicine, Seoul, Republic of Korea, 07440

^c Department of Neurosurgery, Endoscopic Spine Surgery Center, Bumil Hospital Seoul, Seoul, Republic of Korea, 07590
Received 14 March 2021; revised 13 June 2021; accepted 14 June 2021

Abstract

BACKGROUND CONTEXT: Minimally invasive transforaminal lumbar interbody fusion (MIS-TLIF) with microscopic tubular technique is an established surgical procedure with several potential advantages, including decreased surgical-related morbidity, reduced length of hospital stay, and accelerated early rehabilitation. A recently introduced biportal endoscopic technique for spine surgery presents familiar surgical anatomy and can be conducted using a conventional approach with a minimal footprint; it is also applicable to TLIF.

PURPOSE: To compare the clinical and radiological outcomes of biportal endoscopic technique transforaminal lumbar interbody fusion (BE-TLIF) and microscopic tubular technique transforaminal lumbar interbody (MT-TLIF) in patients with single- or two-segment lumbar spinal stenosis with or without spondylolisthesis.

STUDY DESIGN: A retrospective cohort study.

PATIENT SAMPLE: One hundred two participants with neurogenic intermittent claudication or lumbar radiculopathy with single- or two-level lumbar spinal stenosis with or without spondylolisthesis.

OUTCOME MEASURES: Clinical outcomes were assessed using the visual analog scale (VAS) score for the back and leg pain, Oswestry Disability Index (ODI), and the Short Form-36 health survey Questionnaire (SF-36). Demographic data, operative data (total operation time, estimated blood loss, amount of surgical drain, postoperative transfusion, and length of hospital stay), and laboratory results (plasma hemoglobin, serum creatine phosphokinase, and C-reactive protein) were also evaluated. The fusion rate was assessed using the Bridwell interbody fusion grading system. Postoperative complications were also noted.

METHODS: Patients were divided into two groups: group A (BE-TLIF) and group B (MT-TLIF). The clinical outcomes, including VAS-Back and VAS-Leg, ODI, and SF-36 scores, were evaluated at 1 month, 6 months, and 1 year after surgery. Differences in demographics, operative data, and the laboratory and radiological results were assessed between the two groups. The fusion rate was assessed using standard standing lumbar radiographs and computed tomography scans conducted 1 year after surgery.

RESULTS: Seventy-nine patients were analyzed in this study, 47 from group A and 32 from group B. Demographic and operative data were comparable for both the groups. The VAS-Back and

FDA device/drug status: Approved (Titanium porous interbody cage (TTPorous); Conduit EIT cellular titanium cage, De PuySynthes, MA, USA); percutaneous pedicle screw system (ANAXTM 5.5 MIS spinal system, U&I Corporation, Gyeonggi, Korea)

Author disclosures: **MSK:** Nothing to disclose. **KHY:** Nothing to disclose. **JYC:** Nothing to disclose. **DHH:** Nothing to disclose. **HJC:** Nothing to disclose. **HJP:** Nothing to disclose.

*Corresponding author. Department of Orthopedic Surgery, Spine Center, Hallym University Kangnam Sacred Heart Hospital, 1, Singil-ro, Yeongdeungpo-gu, Seoul 07441, Korea, Tel.: 82-2-829-5114; fax: 82-31-849-4469.

E-mail address: phifrog@gmail.com (H.-J. Park).

[#] MS K and KH Y contributed equally

<https://doi.org/10.1016/j.spinee.2021.06.013>

1529-9430/© 2021 Elsevier Inc. All rights reserved.

SF-36 scores were more significantly improved in group A than in group B at 1 month after surgery. However, there were no significant differences between groups for the mean VAS-Back, VAS-Leg, ODI, and SF-36 scores at 1 year after the surgery. Although the total operation time was significantly longer in group A, the estimated blood loss and the amount of surgical drainage was significantly higher in group B ($p < .001$). There were no between-group differences for the fusion rate and postoperative complications.

CONCLUSION: Both BE-TLIF and MT-TLIF provided equivalent and favorable clinical outcomes and fusion rates. Further large-scale, randomized, controlled trials with long-term follow-ups are warranted. © 2021 Elsevier Inc. All rights reserved.

Keywords:

Biportal endoscopic technique; Microscopic tubular technique; Minimally invasive surgery; Transforaminal lumbar interbody fusion; Lumbar spinal stenosis; Neurogenic intermittent claudication; Lumbosacral radiculopathy

Introduction

Minimally invasive transforaminal lumbar interbody fusion (MIS-TLIF) with the microscopic tubular technique (MT) uses a muscle splitting approach with paramedian incisions and a tubular retractor system to minimize the paravertebral musculature injury, blood loss, postoperative pain, opioid consumption, and to improve the mobilization, recovery, and the length of hospital stay during the immediate postoperative period. It possesses equivalent fusion rates and long-term functional outcomes compared to the conventional posterior lumbar interbody fusion (PLIF) and TLIF [1–6]. Microscopic tubular technique transforaminal lumbar interbody fusion (MT-TLIF) requires a high degree of dependence on tubular retractor systems, leading to a challenge for achieving sufficient neural decompression and interbody grafting due to the limited surgical visualization and a risk of a significantly increased radiation exposure [7]. A few studies reported that MT-TLIF resulted in a relatively long operation time, increased revision and readmission rates, increased hardware-related complications, and a higher incidence of nerve root injury, which may be associated with the deep learning curve [8,9].

A recently introduced biportal endoscopy (BE)-assisted technique for spine surgery separates the viewing and working channels and allows for continuous fluid irrigation through two independent surgical ports, in contrast to the uniportal endoscopic spine surgery. Using two independent transmuscular tracts as viewing and working portals results in free movement of the surgical view and dynamic handling of surgical instruments, allowing for a relatively short learning curve [10,11]. BE can be used for all MIS spinal decompression procedures, such as unilateral laminotomy for lumbar discectomy, unilateral laminotomy for bilateral decompression, and unilateral foraminotomy for decompression, all of which have demonstrated good clinical efficacy [12]. Furthermore, BE can be applied to lumbar interbody fusion surgery [13–15].

In prospective clinical trials, BE-assisted decompressive laminectomy is comparable to conventional microscopic decompressive laminectomy in long-term outcomes of up to 2-years, with advantages that include decreased postoperative

pain and opioid consumption and earlier rehabilitation [16–19]. These advantages by BE could be useful for lumbar interbody fusion surgery; however, there is a lack of clinical evidence for BE-assisted transforaminal lumbar interbody fusion (BE-TLIF). The purpose of this study was to compare the clinical and radiological outcomes of BE-TLIF with MT-TLIF after at least 1 year.

Material and methods

Study design and patient population

This retrospective cohort study of prospectively collected data was conducted on 102 consecutive patients who underwent BE-TLIF (57 patients) and MT-TLIF (45 patients) between March 2018 and July 2019. Written informed consent was obtained from all patients.

The inclusion criteria were as follows: 1) Patients aged between 40 and 80 years who had undergone single- or two-segment MIS-TLIF, and had radiating pain in the lower extremities (visual analog scale [VAS] score ≥ 4) and/or neurogenic intermittent claudication and 2) Definite lumbar spinal stenosis with or without low-grade degenerative spondylolisthesis (grade ≤ 2), low-grade isthmic spondylolisthesis (grade ≤ 2), and segmental instability (anterior translation [>3 mm] and/or increasing segmental sagittal motion [$>15^\circ$]) on plain standing radiographs and magnetic resonance imaging (MRI). The exclusion criteria were having high-grade degenerative and isthmic spondylolisthesis (grade >2), advanced adult spinal deformity (coronal Cobb's angle $>25^\circ$), other spinal diseases (eg, spine infection, ankylosing spondylitis, other inflammatory spondylitis, spinal tumor, spinal trauma, or neurologic disorders), cognitive and psychological disorders (eg, Alzheimer dementia, intellectual disability, or drug abuse), and other disorders that the surgeon considered inappropriate for participation in the study. During the study, there were 10 follow-up losses in Group A and 11 in Group B. In addition, one patient in Group B who died from pneumonia and another patient in Group B had an osteoporotic vertebral compression fracture were excluded from the study. Therefore, 23 of the initially included 102 patients were excluded,

2068

M.-S. Kang et al. / The Spine Journal 21 (2021) 2066–2077

and the study was conducted with 47 patients and 65 segments in Group A, and 32 patients and 43 segments in Group B (Fig. 1).

All operations were performed by two spine surgeons (MSK and HJP) with more than 1 year of experience in biportal endoscopic spine surgery and 5 years of experience in microscopic spine surgery. The choice of technique was based on the surgeon's preference and experience. There was no specific contraindication or exclusion in selecting either surgical technique. This study was approved by the Institutional Review Board (IRB approval No: 2020-07-018) of XXX.

Surgical procedure

MT-TLIF was performed using surgical microscopic visualization under a tubular retractor system (METRx system; Medtronic Sofamor Danek, Memphis, TN, USA) or Insight Access Tube set (DePuy Synthes Spine; Raynham, MA, USA). BE-TLIF was performed using a general arthroscopic surgical system (4-mm, 0°, or 30°; ConMed

Linvtac, Largo, FL, USA) using an automated pressure-controlled pump system (10 K Fluid System, ConMed Linvtac). All surgeries were implanted in a banana-shaped curved, titanium porous (Ti-porous; Conduit EIT cellular titanium cage, DePuy Synthes, West Chester, PA, USA) interbody cage using a unilateral approach. In addition, mixtures of autogenous local bone and demineralized bone matrix were grafted into the disc space, and bilateral posterior instrumentation was performed using a percutaneous pedicle screw system with a compression/distraction rack device (ANAX 5.5 MIS spinal system, U&I Corporation, Gyeonggi, Korea).

Under general endotracheal anesthesia, all patients were placed in a knee-flexed prone position on the operating table over a radiolucent Wilson frame. Before surgical prepping, the C-arm fluoroscopic anteroposterior and lateral images were obtained to ensure that the pedicles and endplates could be adequately imaged prior to the surgery. After making a surgical incision and setting the tubular retractor system, the surgical process for MT-TLIF was performed according to Schwender et al. [20].

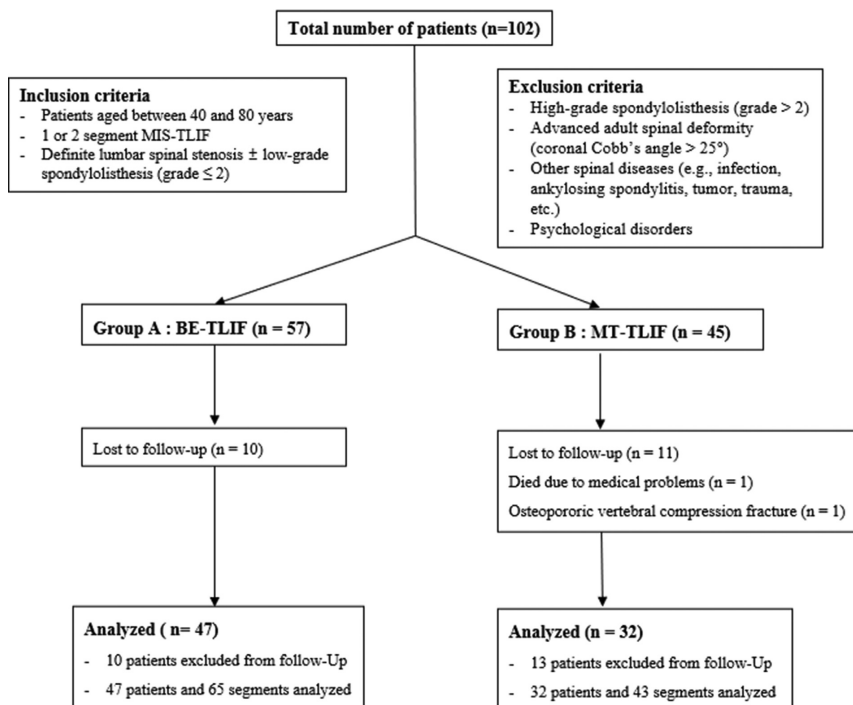


Fig. 1. Flowchart of patient inclusion. MIS-TLIF, minimally invasive transforaminal lumbar interbody fusion; BE-TLIF, biportal endoscopic technique transforaminal lumbar interbody fusion; MT-TLIF, microscopic tubular technique transforaminal lumbar interbody fusion.

For BE-TLIF, two 1-cm long vertical skin incisions were placed right outside the lateral pedicular line of the target segment. These two independent surgical ports were referred to as the P(R) and P(L) ports. In addition, another 0.7 cm long transverse skin incision was made at the point where the intervertebral disc meets with the medial pedicular margin and is referred to as the quarterback (Q) port (Fig. 2). Through each surgical port, the soft tissues were gently peeled from the vertebral isthmus, lamina, and facet joint using a small periosteal elevator. A 4 mm, 0° endoscope was inserted through the P(L) port and the surgical instruments through the P(R) port; this could be reversed following the surgeon's preferences. An automated pressure-controlled pump system was connected to the endoscope and set to a pressure of 30–35 mmHg during the surgery. While maintaining continuous fluid irrigation through each surgical port, an arthroscopic tissue shaver was used for tissue dissection and a bipolar radiofrequency thermo-controlled ablator (bRFA) was used for tissue cauterization and vascular coagulation.

After endoscopic visualization of the ipsilateral inferior and superior articular processes of the facet joint and the upper and lower vertebral lamina, bilateral laminotomy was performed using a diamond high-speed drill and chisel until the boundary of the ligamentum flavum was attached to the bilateral upper and lower lamina, and the facet joint was identified. We carefully performed en-block flavectomy and further neural decompression to identify the contralateral exiting nerve root and the bilateral transversing nerve roots. Subsequently, the inferior and superior articular processes were resected and the lateral extension of the ligamentum flavum was removed exposing the ipsilateral exiting nerve root and Kambin's triangle (Fig. 3, Supplementary Video 1).

Annulotomy was performed using an Indian knife, the serial disc reamers were inserted into the disc and the nuclear fragmentectomy was performed. The cartilaginous endplate was carefully removed using a small-head angled

curette and bRFA [21]. A serial trial implant was used to determine the height of the intervertebral disc with minimal endplate injury and the real implant size. Graft materials were placed in the anterior disc space through a funnel and a banana-shaped interbody cage was placed in the intervertebral space. During this stage, the dura and traversing root can be protected by inserting a dural retractor into the Q portal. Once the cage was inserted at a suitable depth, the interbody cage was reposed using the cage impactor so that it was parallel to the sagittal and coronal planes within the intervertebral disc (Fig. 4, Supplementary Video 2). Finally, we confirmed whether the cage position crossed the midline of the intervertebral disc and whether it was aligned in the sagittal and coronal planes. After hemostasis was achieved, a surgical drain tube was inserted into the Q port. The endoscopic equipment was removed from the surgical field and bilateral percutaneous pedicle screw fixation was performed using conventional methods through the previous incision (Fig. 5).

Postoperative protocol

Neurological evaluations were performed in the recovery room immediately following the surgery. The patients were monitored for 24 hours after the surgery for any complications. Postoperative MRI examination was performed 2 days after the surgery. All patients were encouraged to ambulate on postoperative day 1. For postoperative pain control, we employed automatic intravenous patient-controlled analgesia with 1 mL of continuous infusion and 1 mL of bolus infusion with a 15-minute lockout interval, combined with 25 µg/kg fentanyl, 0.3 mg Ramosetron, and saline until postoperative day 2. Additional tramadol injection was used for pain control upon request by the patients (VAS score>5). After the patient-controlled analgesia was removed, patients were administered a transdermal 5 mg buprenorphine patch (NORSPAN patch, Mundipharma Korea Ltd., Seoul, Korea) at 4 weeks after surgery.

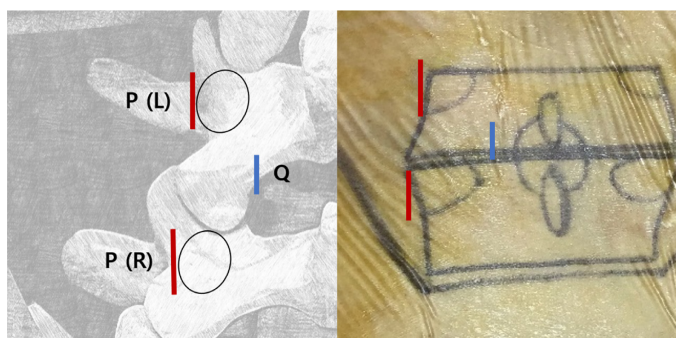


Fig. 2. P(R) and P(L) ports were placed right outside the lateral pedicular line of the target segment. Q port was placed where the intervertebral disc meets with the medial pedicular margin.

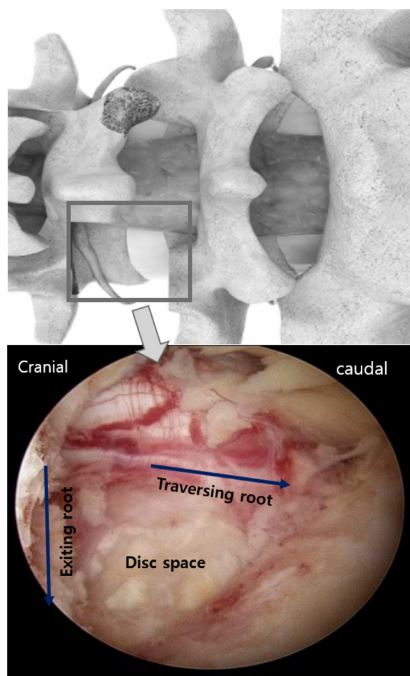


Fig. 3. Endoscopic image of Kambin's triangle. The inferior and superior articular processes were subsequently resected, and the lateral extension of the ligamentum flavum was removed.

Outcomes and measurements

Baseline demographic data were collected, including age, sex, height, weight, body mass index, bone marrow density, and American Society of Anesthesiologist physical status classification score. The clinical outcomes included the VAS score for the axial back (VAS-Back) and leg pain (VAS-Leg), Oswestry Disability Index (ODI), and Short Form-36 health survey Questionnaire in Spine Surgery (SF-36), at baseline and at 1, 6, and 12 months after the surgery. Radiologic measurements, including disc height, segmental sagittal Cobb angle, and lumbar lordotic angle were evaluated through standard standing lateral radiographs at baseline and at 1, 6, and 12 months after the surgery. At 1 year after surgery, plain standing radiographs and computed tomography (CT) scans were performed and the fusion rate was assessed following the Bridwell interbody fusion grading system. Two blinded independent observers measured the spinal fusion grade. For patients included in the final follow-up examination, clinical outcome measurements and postoperative 1-year CT scans were performed.

Operative data including the total operation time (from skin incision to skin closure), estimated blood loss, amount of surgical drain, postoperative transfusion, and hospitalization duration (duration of hospital stay after the operation) were recorded. In addition, kinetics of plasma hemoglobin, serum creatine phosphokinase (CPK), and C-reactive protein (CRP) were measured at baseline and at 1, 3, and 7 days after surgery. Perioperative complications were defined as intraoperative or postoperative complications within 4 weeks after surgery. Late complications were defined as complications from 4 weeks to the final follow-up examination. Recurrent pain was defined as recurrent axial back and/or leg pain with a VAS score of ≥ 4 during the follow-up period.

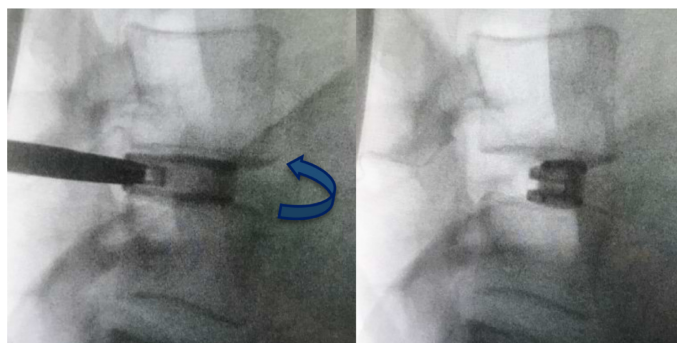


Fig. 4. The cage was inserted at a suitable depth and reposed the interbody cage using the cage impactor so as to be parallel to the sagittal and coronal plane within the intervertebral disc.

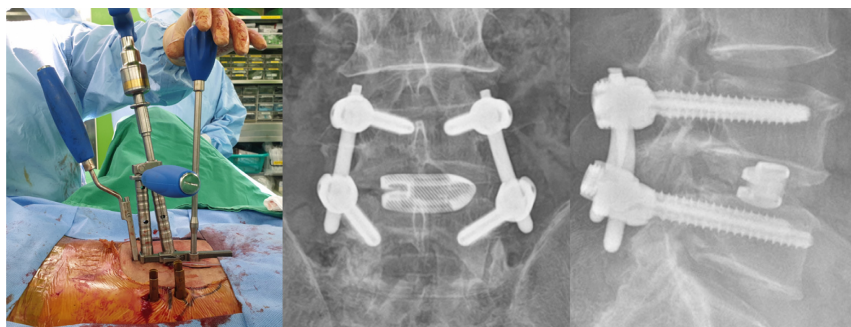


Fig. 5. Bilateral percutaneous pedicle screw fixation was performed using the conventional methods through the previous incision.

Statistical analysis

Patients were divided into Groups A (BE-TLIF) and B (MT-TLIF). Independent t-test (two groups) or ANOVA (>two groups) were used for comparing the normal continuous variables between the two groups. Non-normal continuous variables were analyzed using the Kruskal–Wallis test. Operative data and perioperative complications were analyzed using Fisher's exact test. A p -value $\leq .05$ was considered statistically significant. All statistical analyses were performed using SPSS (IBM Corp., Armonk, NY, USA).

Results

Data of 79 patients (47 and 32 in Groups A and B, respectively) were analyzed in this study. The mean age of patients was 66.87 ± 10.41 and 66.38 ± 9.45 years in Groups A and B, respectively. There was no significant difference in the preoperative diagnosis and fusion level between the two groups. Demographics were comparable in both groups and are summarized in Table 1. The mean follow-up period was 15.01 ± 2.53 months (Table 1).

Clinical outcomes

For both groups, all clinical parameters of the VAS-Back, VAS-Leg, ODI, and SF-36 scores improved significantly over the baseline value from 4 weeks onwards after surgery, which lasted until the final follow-up examination ($p < .05$); there was no significant difference between groups for the mean VAS-Back, VAS-Leg, ODI, and SF-36 scores at baseline and at 6 and 12 months after the surgery. However, the VAS-Back and SF-36 scores improved more significantly in Group A than in Group B at 4 weeks after the surgery. (Fig. 6)

Radiological outcomes and spinal fusion rate

There was no difference in the radiologic parameters before and after surgery between the two groups for the

segment disc height, segmental sagittal Cobb angle, and lumbar lordotic angle. The spinal fusion status was evaluated following the Bridwell grading system: Group A consisted of eight, 10, four, and zero cases of grades I, II, III, and IV, respectively, whereas Group B comprised 14, 24, five, and zero cases of grades I, II, III, and IV, respectively. In the Bridwell grading system, when grades I and II were defined as spinal fusion, there were no significant differences in the fusion rates between the two groups (81.8% and 88.4%, respectively; $p = .63$; Table 2). The interobserver reliability of the spinal fusion grade had intraclass correlation coefficients of 0.96 (95% confidence interval [CI], 0.94–0.98).

Operative data, laboratory outcomes, and complications

The total operation time was significantly longer in Group A (170.46 ± 34.81 minute) than in Group B (135.70 ± 42.88 minute; $p < .001$). However, the mean estimated blood loss and mean amount of surgical drainage was significantly higher in Group B (395.31 ± 180.36 mL; 225.81 ± 101.40 mL) than in Group A (185.74 ± 172.51 mL, $p < .001$; 163.81 ± 121.04 mL, $p = .016$). On postoperative day 1, the decrease in the hemoglobin levels compared to the baseline was significantly different in Group B (-2.32 ± 0.99) than in group A (-0.88 ± 0.81 ; $p < .001$). However, no differences were observed for the mean hospitalization duration and mean amount of transfusion (Table 3).

The serum CPK and CRP kinetics demonstrated a characteristic increase-and-decrease pattern. In both groups, the CPK levels reached a maximum level on postoperative day 1 (CPK₁) and returned to a normal range on postoperative day 7 (CPK₇). Group B had significantly higher CPK₁ levels ($p = .048$). The CRP levels reached a maximum level on postoperative day 2 (CRP₂) and returned to a normal range in the second week after surgery (CRP₁₄). The CRP₁ levels were significantly higher in Group B than in Group A ($p = .033$). The mean CRP₂ values were 3.92 ± 1.87 in

Table 1
Comparison of demographic data between the two groups

		Group A (n = 47)	Group B (n = 32)	P-value
Age (years)		66.87 ± 10.41	66.38 ± 9.45	0.826
Sex (Male: Female)		17: 30	17: 15	0.207
BMI (m/Kg ²)		25.32 ± 3.15	26.23 ± 3.26	0.223
BMD (T-score)		-1.58 ± 1.14	-1.46 ± 1.54	0.718
Fusion level (%)	1	29 (61.7)	21 (65.6)	0.907
	2	18 (38.3)	11 (34.4)	
Operation level (%)	L2-3	4 (6.2)	1 (2.3)	0.448
	L3-4	7 (10.8)	9 (20.9)	
	L4-5	34 (52.3)	22 (51.2)	
	L5-S1	20 (30.8)	11 (25.6)	
Cage height (mm)		11.25 ± 1.38	11.14 ± 1.01	0.645
Follow up months		14.5 ± 2.3	15.78 ± 3.16	0.376

BMI, body mass index; BMD, bone mineral density.
Note: Values are presented as mean ± standard deviation. Statistical significance was set at $p < 0.05$.

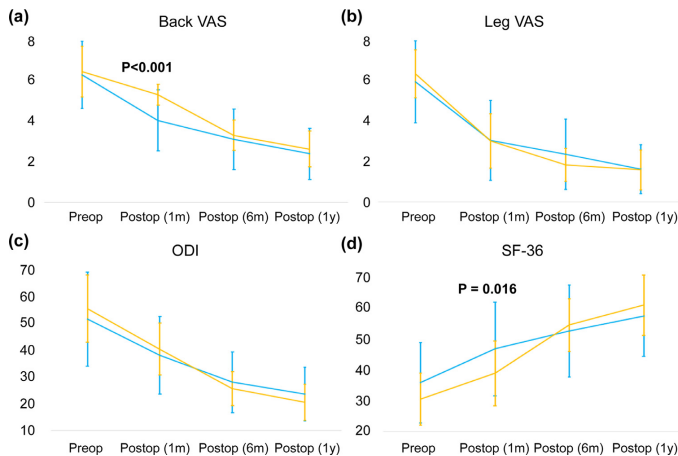


Fig. 6. Clinical outcomes between two groups. Blue line: Group A; Yellow line: Group B. A) VAS-Back. B) VAS-Leg. C) ODI. D) SF-36. In both groups, all clinical parameters improved significantly over the baseline value from 4 weeks after surgery, which lasted until the final follow-up examination ($p < 0.05$). VAS-Back and SF-36 were significantly improved in Group A than in Group B at 4 weeks after surgery. VAS, visual analog scale; ODI, Oswestry Disability Index.

Group A and 8.43 ± 1.29 in Group B; however, no significant difference was observed between the two groups ($p = .172$) (Fig. 7).

One, two, and three cases of incomplete neural decompression, epidural hematoma, and incidental dural tear, respectively, occurred in Group A. All but one patient who had incomplete neural decompression recovered without a secondary surgery. Two, one, one, and one cases of incomplete neural decompression, epidural hematoma, incidental durotomy, and surgical-site infection, respectively, occurred in Group B. No major complications, such as surgery-related death, thromboembolic events, atelectasis, pneumonia, surgical-site infection, stroke, and neurological

damage were observed. There were no between-group differences regarding the complications (Table 4).

Discussion

In this retrospective cohort study, we demonstrated that BE-TLIF delivered comparable clinical outcomes and spinal fusion rates to MT-TLIF at 12 months after the surgery. The VAS-Back and SF-36 scores improved significantly with BE-TLIF in the fourth week after surgery. Although BE-TLIF requires a longer operation time than MT-TLIF, it involves less perioperative blood loss. BE-TLIF results in reduced lower back pain and improved quality of life during

Table 2
Comparison of radiologic outcomes between the two groups

	Group A (n = 65 seg)	Group B (n = 43 seg)	P-value
Preop disc height (mm)	8.39 ± 2.70	7.82 ± 2.49	0.266
Preop op level sagittal angle (°)	8.36 ± 4.22	7.66 ± 3.78	0.371
Preop lumbar lordosis (°)	32.27 ± 13.31	32.10 ± 10.74	0.943
Postop disc height (mm)	10.30 ± 1.90	10.27 ± 3.09	0.949
Postop op level sagittal angle (°)	7.67 ± 4.45	8.11 ± 3.64	0.577
Postop lumbar lordosis (°)	34.35 ± 12.59	37.46 ± 10.88	0.182
*Disc height (mm)	1.94 ± 3.09	2.36 ± 3.98	0.561
*Op level sagittal angle (°)	0.31 ± 5.52	0.75 ± 4.63	0.342
*Lumbar lordosis (°)	2.48 ± 11.94	5.36 ± 7.59	0.141
Fusion (%) [†]	Yes (1,2) No (3,4)	38 (88.7) 5 (11.6)	0.473
Fusion grade (%) [†]	1 2 3 4	24 (36.9) 33 (50.8) 8 (12.3) 0 (0)	0.630

Note: Values are presented as mean ± standard deviation. Statistical significance was set at $p < 0.05$.

* Difference between pre- and postoperative values.

[†] Bridwell interbody fusion grading system: Grade I is defined as a fusion with remodeling and trabeculae present; Grade II is an intact graft with incomplete remodeling and no lucency present; Grade III is an intact graft with potential lucency at the cranial or caudal end; Grade IV is absent fusion with collapse/resorption of the graft.

Table 3
Comparison of surgical technique related outcomes between the two groups

	Group A (n=47)	Group B (n=32)	P-value
Preop Hb (g/dL)	13.09 ± 1.47	13.23 ± 1.59	0.691
Postop Hb (g/dL)	12.22 ± 1.60	10.92 ± 1.69	0.001*
Hb (Δ)	-0.88 ± 0.81	-2.32 ± 0.99	< 0.001*
Postop Hemovac drain (mL)	163.81 ± 121.04	225.81 ± 101.40	0.016*
Op time (minutes)	170.46 ± 34.81	135.70 ± 42.88	< 0.001*
Hospital day	14.53 ± 4.14	12.59 ± 4.54	0.058
EBL (mL)	185.74 ± 172.51	395.31 ± 180.36	< 0.001*
Transfusion (%)	0 1 2	27 (84.4) 4 (12.5) 1 (3.1)	0.614

Hb: Hemoglobin; EBL: Estimated blood loss.

Values are presented as mean ± standard deviation. Statistical significance was set at $P < 0.05$.

* $P < 0.05$.

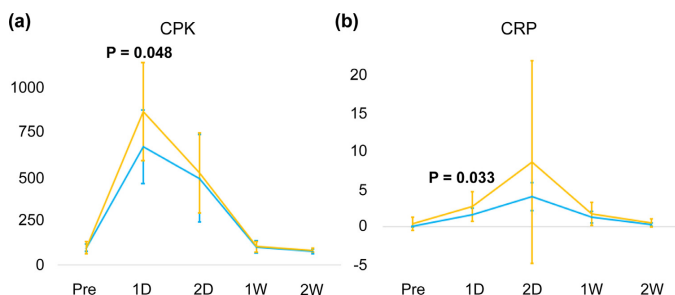


Fig. 7. Laboratory outcomes between two groups. Blue line: Group A; Yellow line: Group B. A) CPK. B) CRP. In both groups, the kinetics of serum CPK and CRP showed a characteristic increase-and-decrease pattern. CPK and CRP were significantly inferior in Group A than in Group B at 1 day after surgery. CPK, creatine phosphokinase; CRP, C-reactive protein.

serum CRP was 8.10 in Group B and >3.89 in Group A; however, this difference was not statistically significant. These findings indicated that the biportal endoscopic technique in transforaminal lumbar interbody fusion produces less inevitable systemic inflammatory response and less iatrogenic muscle injury, which is associated with less postoperative pain and higher quality of life in the early postoperative period. Therefore, the biportal endoscopic technique is a unique and reasonable technique for transforaminal lumbar interbody fusion because it is less invasive and is able to enhance functional recovery.

The fact that wash-out of graft material and osteogenic progenitors, such as hematoma, at the fusion bed may negatively affect spinal fusion because of continuous fluid irrigation is a great concern. However, previous study on transforaminal lumbar interbody fusion assisted with biportal endoscopic technique have reported an acceptable spinal fusion rate of >80%, in line with our findings [13]. Especially, the fusion rate at 12 months after surgery confirmed the non-inferiority of BE-TLIF compared to MT-TLIF. To increase the contact surface between the graft and the vertebral body and the chance of successful spinal fusion, a substantial proportion of disc materials should be removed without any vertebral endplate damage. Thus, the biportal endoscopic technique can provide a clean and magnified real-time surgical visualization, allowing for complete visual inspection of all the fusion beds. Continuous fluid irrigation may prevent the accumulation of heat energy that can cause thermal necrosis of the vertebral bone and endplate, induced by using a power drill and electrocautery. Additionally, Aryan et al. conducted a comparative study on the endplate preparation of lumbar interbody fusion using the conventional method and bRFA; they reported significantly less cage subsidence in the bRFA groups [21]. For endoscopic lumbar interbody fusion, although there is still no clear evidence, complete visual inspection of endplate trabecular bone, dispersion of thermal energy by continuous fluid irrigation, and endplate preparation using bRFA may potentially increase the chances of successful interbody spinal fusion.

This study had several limitations. First, we included a small sample size and a short follow-up period (>12 months). Second, assessment related to changes in the cross-sectional area of the paravertebral muscle through postoperative MRI examination, as an evaluation of muscle damage, was not conducted. Finally, there was heterogeneity in the type and length of conservative treatment, such as oral medication, physical therapy, and selective nerve root block. The strength of this study was that it evaluated various clinical indices, such as the VAS score for pain measure, ODI for the functional outcome, SF-36 for patient satisfaction, and laboratory biomarkers to determine the feasibility and effectiveness of BE-TLIF. However, because of the technical heterogeneity between the BE technique and microscopic tubular technique, sufficient learning curves are required, and considering the available literature,

it is recommended to take 60 cases of biportal endoscopic spine surgery and challenge the BE-TLIF [39,40]. A prospective randomized controlled trial with longer follow-up periods and a larger sample size is required for additional assessment of biportal endoscopic transforaminal lumbar interbody fusion.

Conclusions

In this study, BE-TLIF and MT-TLIF provided equivalent and favorable clinical outcomes and fusion rates. Further large-scale, randomized, controlled trials with long-term follow-up periods are warranted.

Declaration of competing interests

The authors declare that they have no competing interests.

Acknowledgments

We would like to thank Editage (www.editage.co.kr) for English language editing. This research was supported by Hallym University Research Fund 2019 (HURF-2019-43).

Supplementary materials

Supplementary material associated with this article can be found in the online version at <https://doi.org/10.1016/j.spinee.2021.06.013>.

References

- [1] Putzier M, Hartwig T, Hoff EK, Streitparth F, Strube P. Minimally invasive TLIF leads to increased muscle sparing of the multifidus muscle but not the longissimus muscle compared with conventional PLIF—a prospective randomized clinical trial. *Spine J* 2016;16:811–9. <https://doi.org/10.1016/j.spinee.2015.07.460>.
- [2] Singh K, Nandyala SV, Marquez-Lara A, Fineberg SJ, Oglesby M, Pelton MA, et al. A perioperative cost analysis comparing single-level minimally invasive and open transforaminal lumbar interbody fusion. *Spine J* 2014;14:1694–701. <https://doi.org/10.1016/j.spinee.2013.10.053>.
- [3] Price JP, Dawson JM, Schwender JD, Schellhas KP. Clinical and radiologic comparison of minimally invasive surgery with traditional open transforaminal lumbar interbody fusion: a review of 452 patients from a single center. *Clin Spine Surg* 2018;31:E121–6. <https://doi.org/10.1097/BSD.0000000000000581>.
- [4] Seng C, Siddiqui MA, Wong KP, Zhang K, Yeo W, Tan SB, et al. Five-year outcomes of minimally invasive versus open transforaminal lumbar interbody fusion: a matched-pair comparison study. *Spine (Phila Pa 1976)* 2013;38:2049–55. <https://doi.org/10.1097/BRS.0b013e3182a8212d>.
- [5] Lee KH, Yue WM, Yeo W, Soeharno H, Tan SB. Clinical and radiological outcomes of open versus minimally invasive transforaminal lumbar interbody fusion. *Eur Spine J* 2012;21:2265–70. <https://doi.org/10.1007/s00586-012-2281-4>.
- [6] Peng CW, Yue WM, Poh SY, Yeo W, Tan SB. Clinical and radiological outcomes of minimally invasive versus open transforaminal lumbar interbody fusion. *Spine (Phila Pa 1976)* 2009;34:1385–9. <https://doi.org/10.1097/BRS.0b013e3181a4e3be>.
- [7] Wanderman NR, Francois EL, Nassar A, Sebastian AS. Is minimally invasive transforaminal interbody fusion superior to traditional open

- technique? Clin Spine Surg 2018;31:139–42. <https://doi.org/10.1097/BSD.0000000000000596>.
- [8] Park J, Ham DW, Kwon BT, Park SM, Kim HJ, Yeom JS. Minimally invasive spine surgery: techniques, technologies, and indications. Asian Spine J 2020;14:694–701. <https://doi.org/10.31616/asj.2020.0384>.
 - [9] Nandyala SV, Fineberg SJ, Pelton M, Singh K. Minimally invasive transforaminal lumbar interbody fusion: one surgeon's learning curve. Spine J 2014;14:1460–5. <https://doi.org/10.1016/j.spinee.2013.08.045>.
 - [10] Choi DJ, Choi CM, Jung JT, Lee SJ, Kim YS. Learning curve associated with complications in bipostral endoscopic spinal surgery: challenges and strategies. Asian Spine J 2016;10:624–9. <https://doi.org/10.4184/asj.2016.10.4.624>.
 - [11] Nomura K, Yoshida M. Assessment of the learning curve for micro-endoscopic decompression surgery for lumbar spinal canal stenosis through an analysis of 480 cases involving a single surgeon. Global Spine J 2017;7:54–8. <https://doi.org/10.1055/s-0036-1583943>.
 - [12] Kim JE, Choi DJ, Park EJ, Lee HJ, Hwang JH, Kim MC, et al. Bipostral endoscopic spinal surgery for lumbar spinal stenosis. Asian Spine J 2019;13:334–42. <https://doi.org/10.31616/asj.2018.0210>.
 - [13] Kim JE, Yoo HS, Choi DJ, Park EJ, Jee SM. Comparison of minimal invasive versus bipostral endoscopic transforaminal lumbar interbody fusion for single-level lumbar disease. Clin Spine Surg 2020. <https://doi.org/10.1097/bsd.0000000000001024>.
 - [14] Kang MS, Chung HJ, Jung HJ, Park HJ. How I do it? Extraforaminal lumbar interbody fusion assisted with bipostral endoscopic technique. Acta Neurochir (Wien) 2021;163:295–9. <https://doi.org/10.1007/s00701-020-04435-1>.
 - [15] Heo DH, Son SK, Eum JH, Park CK. Fully endoscopic lumbar interbody fusion using a percutaneous unilateral bipostral endoscopic technique: technical note and preliminary clinical results. Neurosurg Focus 2017;43:E8. <https://doi.org/10.3171/7.FOCUS.17146>.
 - [16] Park SM, Park J, Jang HS, Heo YW, Han H, Kim HJ, et al. Bipostral endoscopic versus microscopic lumbar decompressive laminectomy in patients with spinal stenosis: a randomized controlled trial. Spine J 2020;20:156–65. <https://doi.org/10.1016/j.spinee.2019.09.015>.
 - [17] Park SM, Kim GU, Kim HJ, Choi HJ, Chang BS, Lee CK, et al. Is the use of a unilateral bipostral endoscopic approach associated with rapid recovery after lumbar decompressive laminectomy? A preliminary analysis of a prospective randomized controlled trial. World Neurosurg 2019;128:e709–e18. <https://doi.org/10.1016/j.wneu.2019.04.240>.
 - [18] Choi DJ, Kim JE. Efficacy of bipostral endoscopic spine surgery for lumbar spinal stenosis. Clin Orthop Surg 2019;11:82–8. <https://doi.org/10.4055/cios.2019.11.1.82>.
 - [19] Lin GX, Huang P, Kotheeranurak V, Park CW, Heo DH, Park CK, et al. A systematic review of unilateral bipostral endoscopic spinal surgery: preliminary clinical results and complications. World Neurosurg 2019;125:425–32. <https://doi.org/10.1016/j.wneu.2019.02.038>.
 - [20] Schwender JD, Holly LT, Rouben DP, Foley KT. Minimally invasive transforaminal lumbar interbody fusion (TLIF): technical feasibility and initial results. J Spinal Disord Tech 2005;18(Suppl):S1–6. <https://doi.org/10.1097/01.bsd.0000132291.50455.0D>.
 - [21] Aryan HE, Ames CP, Szandra B, Nguyen AD, Acosta Jr. FL, Taylor WR. Coblation of spinal endplates in preparation for interbody spinal fusion. J Clin Neurosci 2006;13:349–52. <https://doi.org/10.1016/j.jocn.2005.04.027>.
 - [22] Schöller K, Alimi M, Cong GT, Christos P, Härtl R. Lumbar spinal stenosis associated with degenerative lumbar spondylolisthesis: a systematic review and meta-analysis of secondary fusion rates following open vs minimally invasive decompression. Neurosurgery 2017;80:355–67. <https://doi.org/10.1093/neuros/nyw091>.
 - [23] Miller LE, Bhattacharyya S, Pracyk J. Minimally invasive versus open transforaminal lumbar interbody fusion for single-level degenerative disease: a systematic review and meta-analysis of randomized
 - [38] Goldstein CL, Macwan K, Sundararajan K, Rampersaud YR. Perioperative outcomes and adverse events of minimally invasive versus open posterior lumbar fusion: meta-analysis and systematic review. J Neurosurg Spine 2016;24:416–27. <https://doi.org/10.3171/2015.2.SPINE.14973>.
 - [39] Park SM, Kim HJ, Kim GU, Choi MH, Chang BS, Lee CK, et al. Learning curve for lumbar decompressive laminectomy in bipostral controlled trials. World Neurosurg 2020;133:358–65 e4. <https://doi.org/10.1016/j.wneu.2019.08.162>.
 - [24] Goldstein CL, Phillips FM, Rampersaud YR. Comparative effectiveness and economic evaluations of open versus minimally invasive posterior or transforaminal lumbar interbody fusion: a systematic review. Spine (Phila Pa 1976) 2016;41(Suppl 8):S74–89. <https://doi.org/10.1097/BRS.0000000000001462>.
 - [25] Mobbs RJ, Phan K, Malham G, Seex K, Rao PJ. Lumbar interbody fusion: techniques, indications and comparison of interbody fusion options including PLIF, TLIF, MI-TLIF, OLIF/ATP, LLIF and ALIF. J Spine Surg 2015;1:2–18. <https://doi.org/10.3978/j.issn.2414-469X.2015.10.05>.
 - [26] Rodríguez-Vela J, Lobo-Escobar A, Joven E, Muñoz-Marín J, Herrera A, Velilla J. Clinical outcomes of minimally invasive versus open approach for one-level transforaminal lumbar interbody fusion at the 3- to 4-year follow-up. Eur Spine J 2013;22:2857–63. <https://doi.org/10.1007/s00586-013-2853-y>.
 - [27] Arts M, Brand R, van der Kallen B, Lycklama à Nijeholt G, Peul W. Does minimally invasive lumbar disc surgery result in less muscle injury than conventional surgery? A randomized controlled trial. Eur Spine J 2011;20:51–7. <https://doi.org/10.1007/s00586-010-1482-y>.
 - [28] Kotil K, Tuncakale T, Tatar Z, Koldas M, Kural A, Bilge T. Serum creatine phosphokinase activity and histological changes in the multifidus muscle: a prospective randomized controlled comparative study of discectomy with or without retraction. J Neurosurg Spine 2007;6:121–5. <https://doi.org/10.3171/spi.2007.6.2.121>.
 - [29] Perez-Cruet MJ, Hussain NS, White GZ, Begun EM, Collins RA, Fahim DK, et al. Quality-of-life outcomes with minimally invasive transforaminal lumbar interbody fusion based on long-term analysis of 304 consecutive patients. Spine (Phila Pa 1976) 2014;39:E191–8. <https://doi.org/10.1097/BRS.0000000000000078>.
 - [30] Bowers CA, Burns G, Salzman KL, McGill LD, Macdonald JD. Comparison of tissue effects in rabbit muscle of surgical dissection devices. Int J Surg 2014;12:219–23. <https://doi.org/10.1016/j.ijsu.2013.12.014>.
 - [31] Grootz SF, Birnbaum K, Meyer C, Strunk H, Schild HH, Wilhelm KE. Thermometry during coblation and radiofrequency ablation of vertebral metastases: a cadaver study. Eur Spine J 2013;22:1389–93. <https://doi.org/10.1007/s00586-012-2647-7>.
 - [32] Kobayashi K, Ando K, Kato F, Kanemura T, Sato K, Hachiya Y, et al. Predictors of prolonged length of stay after lumbar interbody fusion: a multicenter study. Global Spine J 2019;9:466–72. <https://doi.org/10.1177/2192568218800054>.
 - [33] Kobayashi K, Ando K, Kato F, Kanemura T, Sato K, Hachiya Y, et al. Reoperation within 2 years after lumbar interbody fusion: a multicenter study. Eur Spine J 2018;27:1972–80. <https://doi.org/10.1007/s00586-018-5508-1>.
 - [34] Hosono N, Namekata M, Makino T, Miwa T, Kaito T, Kaneko N, et al. Perioperative complications of primary posterior lumbar interbody fusion for nonisthmus spondylolisthesis: analysis of risk factors. J Neurosurg Spine 2008;9:403–7. <https://doi.org/10.3171/SPS.2008.9.11.403>.
 - [35] Villavicencio AT, Burneikiene S, Bulsara KR, Thramann JJ. Perioperative complications in transforaminal lumbar interbody fusion versus anterior-posterior reconstruction for lumbar disc degeneration and instability. J Spinal Disord Tech 2006;19:92–7. <https://doi.org/10.1097/01.bsd.0000185277.14484.4e>.
 - [36] Jenkins NW, Parrish JM, Hrynewycz NM, Brundage TS, Singh K. Complications following minimally invasive transforaminal lumbar interbody fusion: incidence, independent risk factors, and clinical impact. Clin Spine Surg 2020;33:E236–40. <https://doi.org/10.1097/BSD.0000000000000933>.
 - [37] Narain AS, Parrish JM, Jenkins NW, Haws BE, Khechen B, Yom KH, et al. Risk factors for medical and surgical complications after single-level minimally invasive transforaminal lumbar interbody fusion. Int J Spine Surg 2020;14:125–32. <https://doi.org/10.14444/7018>.
 - [40] Kim JE, Yoo HS, Choi DJ, Hwang JH, Park EJ, Chung S. Learning curve and clinical outcome of bipostral endoscopic assisted lumbar interbody fusion. BioMed Res 2020;2020:8815432. <https://doi.org/10.1155/2020/8815432>.

THANK YOU TO OUR OFFICIAL PARTNERS

FOR SUPPORTING THE 2ND ANNUAL AMPLIFY SURGICAL ENDOSCOPIC SPINE SYMPOSIUM

UCLA David Geffen School of Medicine

UCLA Health

DEPARTMENT OF ORTHOPAEDIC SURGERY

GOLD SPONSORS



SILVER SPONSORS



A2 Medical
Improving Care Through Technology

BRONZE SPONSORS



CERAPEDICS
Enhancing the Science of Bone Repair



PERKINS COIE
COUNSEL TO GREAT COMPANIES

SUPPORTERS

SOLCO.



Please refer to package insert for current warnings, precautions, and instructions for use.

For more information or to place an order:

765-AMPLIFY (765-267-5439) | info@amplifysurgical.com | amplifysurgical.com

© Copyright 2023. All Rights Reserved. dualX®, dualPortal®, and dualLIF® are registered trademarks of Amplify Surgical, Inc.

Document Number: ML10050.C

AMPLIFY
SURGICAL