

Transforming the Ordinary

2nd Annual dualPortal Endoscopic Spine Symposium

March 4, 2023
University of California, Los Angeles

Transforming the Ordinary

Welcome to the 2nd Annual Dual Portal Symposium!

- Symposium Agenda
- Faculty Introductions
- Welcome Address

**2ND ANNUAL AMPLIFY SURGICAL
ENDOSCOPIC SPINE SYMPOSIUM**
FEATURING dualPortal™ AND dualX® SYSTEMS
MARCH 4, 2023 | LOS ANGELES, CA

Meet our Symposium Faculty | Expert faculty from the United States and South Korea will be on hand to present, demonstrate, and walk-through dualPortal™ and dualX® Systems

 SYMPOSIUM CHAIR Dr. Don Y. Park Los Angeles, CA UCLA HEALTH	 Dr. Cheol Woong Park Daejeon, South Korea DAEJEON WOORI HOSPITAL	 Dr. Dong Hwa Heo Seoul, South Korea CPD SPINE HOSPITAL	 Dr. Nam Lee Busan, South Korea YONSEI CHEOK HOSPITAL	 Dr. Man Kyu Park Busan, South Korea GOOD MOONHWA HOSPITAL
ALL FEATURING IN: CADAVER WORKSHOP Register now to reserve your space in our Immersive Cadaver Workshop, an interactive lab portion of the Symposium program facilitated by our panel of Symposium Faculty.				
 Dr. Brian Kwon Boston, MA NEW ENGLAND BAPTIST HOSPITAL	 Dr. James Mok Chicago, IL NORTHSHORE UNIVERSITY HEALTHSYSTEM	 Dr. Jamie Gottlieb Dallas, TX GOTTLIEB SPINE	 Dr. Nima Salari Phoenix, AZ DESERT INSTITUTE FOR SPINE CARE	

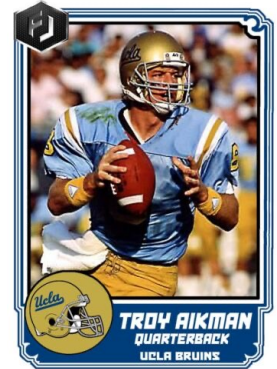
UCLA David Geffen School of Medicine
SURGICAL SCIENCE LABORATORY
UCLA CENTER FOR HEALTH SCIENCES





- Fun facts

- Founded in 1919
- Famous alumni: Jackie Robinson, Troy Aikman, Reggie Miller, Russell Westbrook, Francis Ford Coppola, James Dean
- John Wooden won 10 division I national championships with Kareem Abdul-Jabbar, Bill Walton
- Birthplace of the Internet in 1969
- UCLA athletes won 270 Olympic medals
- 27 Nobel laureates as faculty, researchers, or alumni



Symposium Agenda

- **8am – 8:15am:** Getting started with dualPortal Endoscopic Spine Surgery. James Mok, MD
- **8:15am – 8:30am:** What is dualPortal Endoscopic Spine Surgery and how does it differ from Uniportal Endoscopic Spine Surgery? Nima Salari, MD
- **8:30am – 8:45am:**How to optimize dualPortal Endoscopic Spine Surgery in the Outpatient ASC Setting. Jamie Gottlieb, MD
- **8:45am – 9am:** dualPortal Endoscopic Spine Surgery – Discectomy: Equipment needed, how to set up the OR. Brian Kwon, MD
- **9am – 9:15am:** dualPortal Endoscopic Spine Surgery – ULBD: Principles, Anatomy, Workflow. Cheol Woong Park, MD
- **9:15am – 9:30am:** dualPortal Endoscopic TLIF: Special considerations. Dong Hwa Heo, MD
- **9:30am – 9:45am:** The Marriage of dualPortal + dualX TLIF: Amplify dualLIF – Don Young Park, MD
- **9:45am – 9:50am:** Importance of Intellectual Property and Surgical Technologies– Karl Klassen, Esq.

Symposium Agenda

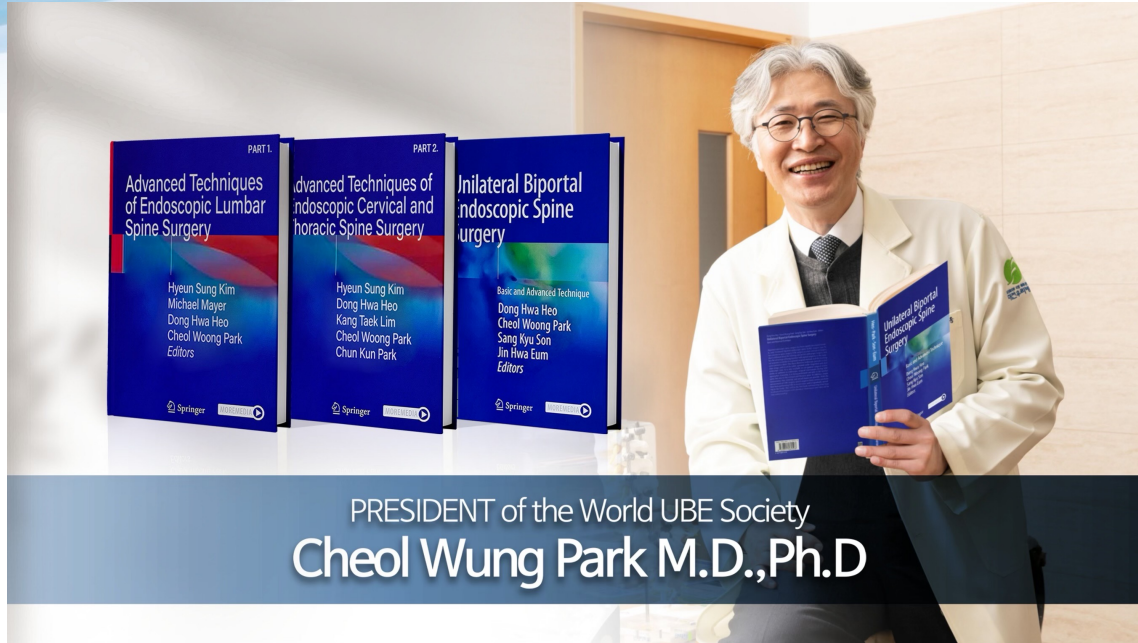
- **9:50am – 10:15am:** Break, EXHIBIT VIEWING
- **10:30am – 12:30pm:** dualPortal TLIF (dualLIF) demonstration
- **12:30pm – 12:45pm:** Break, EXHIBIT VIEWING
- **12:45pm – 1:30pm:** Lunch/Presentations
- **12:45pm – 12:55pm:** dualPortal Endoscopic Spine Surgery – Posterior cervical foraminotomy, Nam Lee, MD
- **12:55pm – 1:05pm** dualPortal Endoscopic Spine Surgery – Lumbar central and foraminal stenosis, Man Kyu Park, MD
- **1:05pm – 1:30pm:** dualPortal Endoscopic Spine Surgery Case Reviews
- **1:30pm – 3:45pm:** dualPortal TLIF (dualLIF) Hands-On
- **3:45pm – 4pm:** Break, EXHIBIT VIEWING
- **4pm-6PM:** Additional dualPortal Hands-On

Don Young Park, M.D.



- Associate Professor
- Vice Chair of Quality and Safety
- UCLA Department of Orthopaedic Surgery
- Directs the Spinal Endoscopic Research Program at UCLA
- Trained at Stanford for orthopaedic surgery and spine surgery fellowship

Cheol Woong Park, M.D.



PRESIDENT of the World UBE Society
Cheol Wung Park M.D.,Ph.D

- Hospital President, Daejeon Woori Hospital
- Department of Neurosurgery
- Past President of The World Unilateral Biportal Endoscopy Research Society
- Completed > 2000 dualPortal cases
- One of the original pioneers of the dualPortal technique

Dong Hwa Heo, M.D., Ph.D.



- Department of Neurosurgery
- Endoscopic Spine Surgery Center
- CPD Spine Hospital
- Vice President of The World Unilateral Biportal Endoscopy Research Society
- Published > 50 original papers on dualPortal spinal endoscopy
- One of the original pioneers of the dualPortal technique

Nam Lee, M.D.



- Department of Neurosurgery
- Yonsei Cheok Hospital
- Busan, South Korea

Man Kyu Park, M.D.



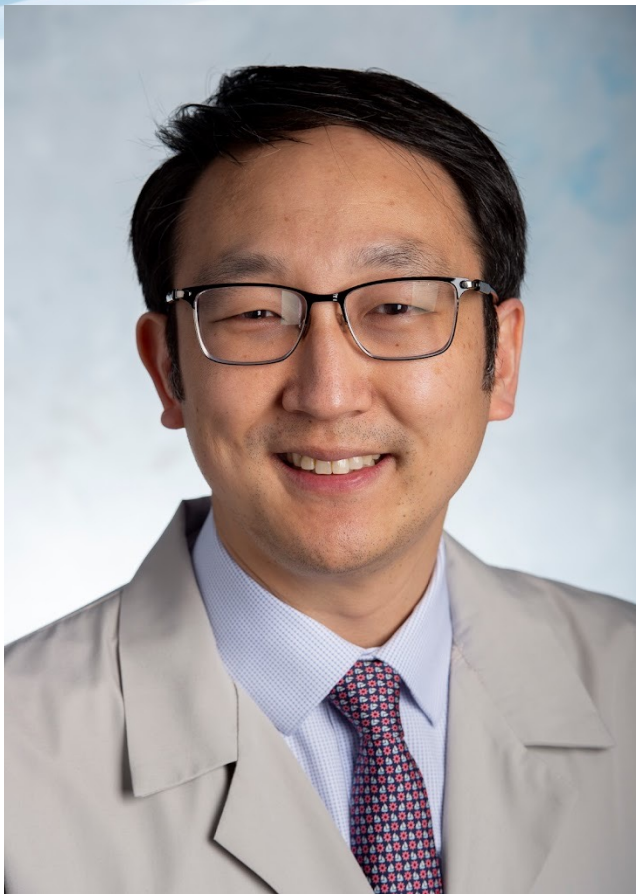
- Department of Neurosurgery
- Good Moonhwa Hospital
- Busan, South Korea

Brian Kwon, M.D.



- Assistant Clinical Professor
- Tufts University School of Medicine
- New England Baptist Hospital
- Boston, MA
- Trained at University Hospitals of Cleveland for orthopaedic surgery residency and New England Baptist Hospital for spine surgery fellowship

James Mok, M.D.



- Northshore University Health System
- Chicago, IL
- Trained at UCSF for orthopaedic surgery residency and Cedars Sinai for spine surgery fellowship

Jamie Gottlieb, M.D.



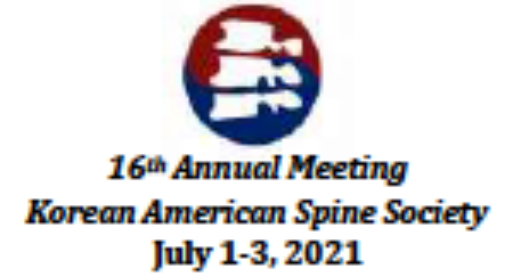
- Gottlieb Spine
- Dallas, Tx
- Trained at UT Southwestern for orthopaedic surgery residency and the Texas Back Institute for spine surgery fellowship

Nima Salari, M.D.



- Desert Institute for Spine Care
- Phoenix, AZ
- Trained at Johns Hopkins for orthopaedic surgery residency and Stanford for spine surgery fellowship

How I got Started with Dual Portal Endoscopy



- NASS 2019 Endoscopic Course
- Elliquence endoscopic labs in 2020



Daejeon Woori Hospital



Daejeon Woori Hospital



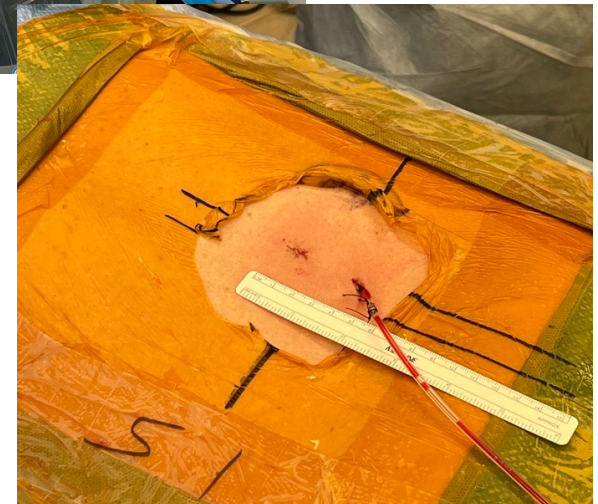
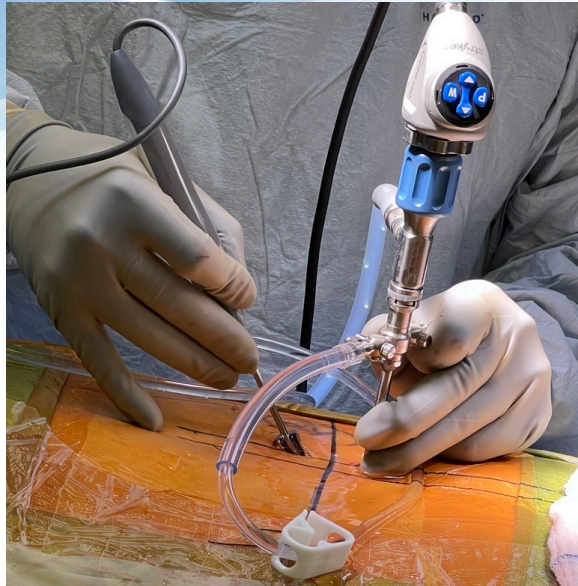
Seoul Bumin Hospital



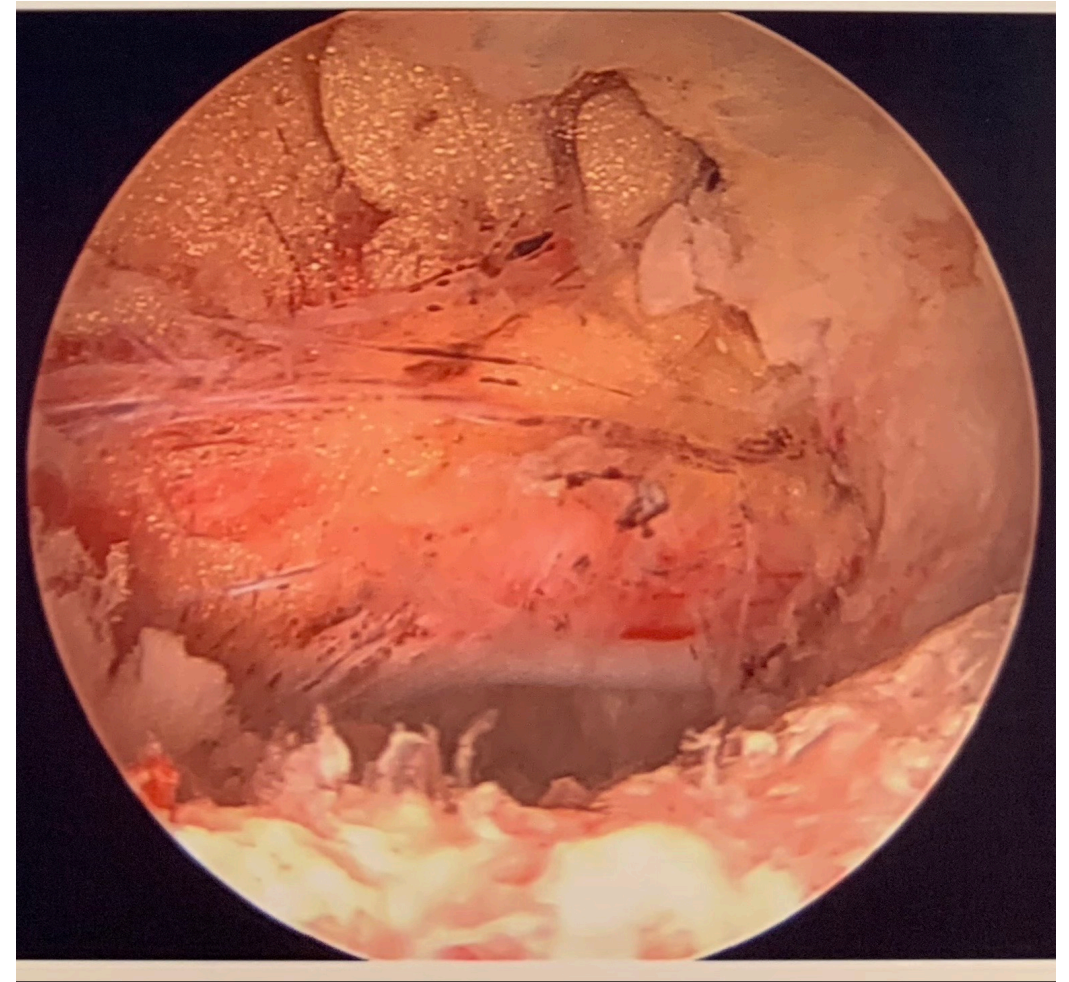
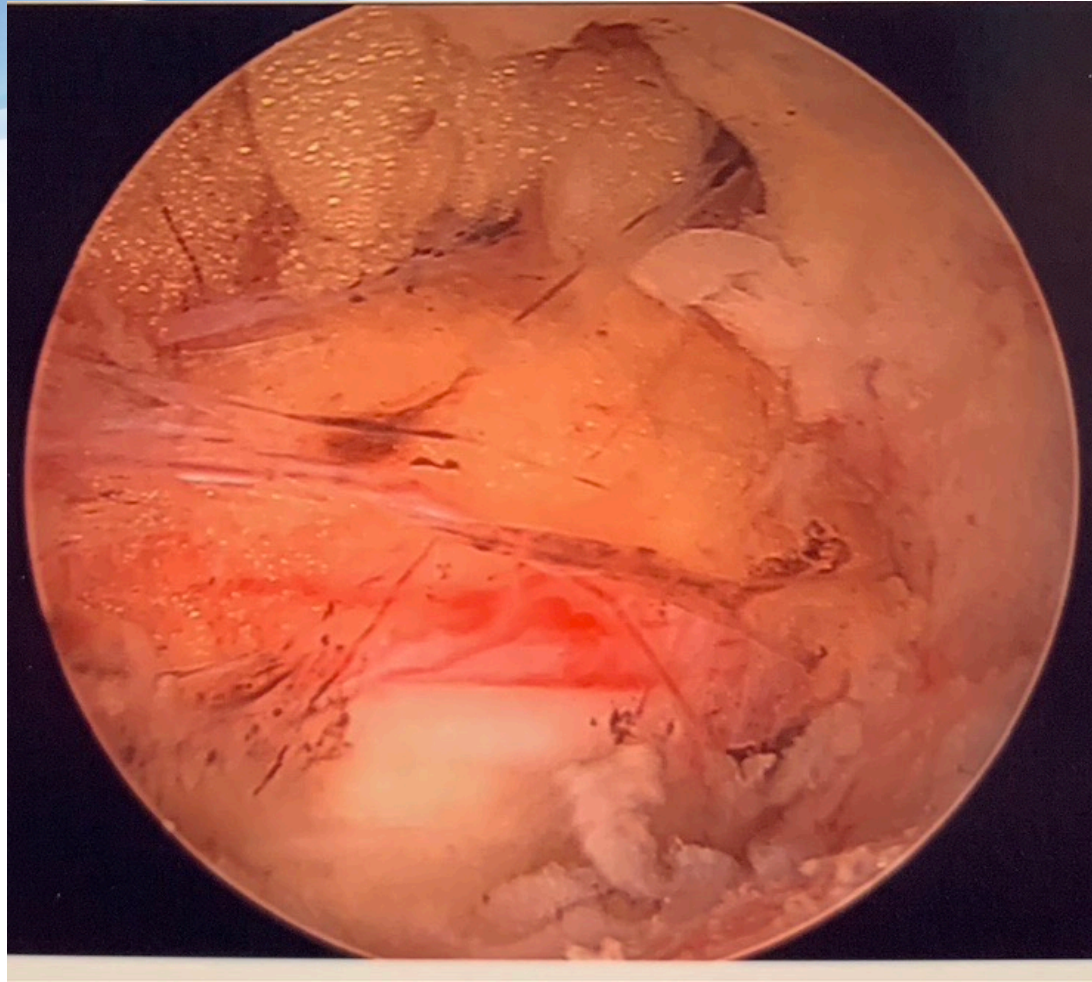
Seoul Bumin Hospital



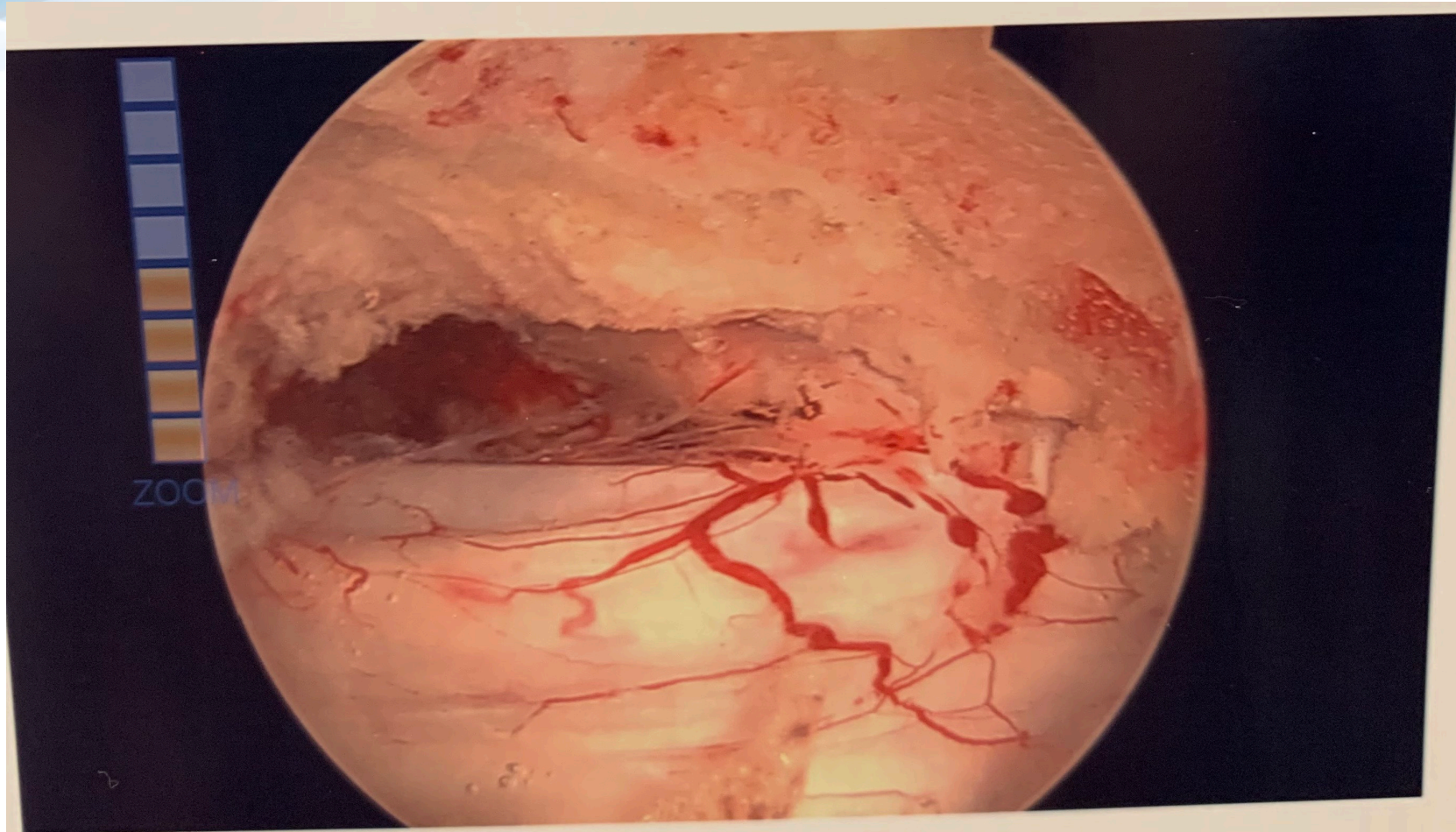
My first dualPortal case



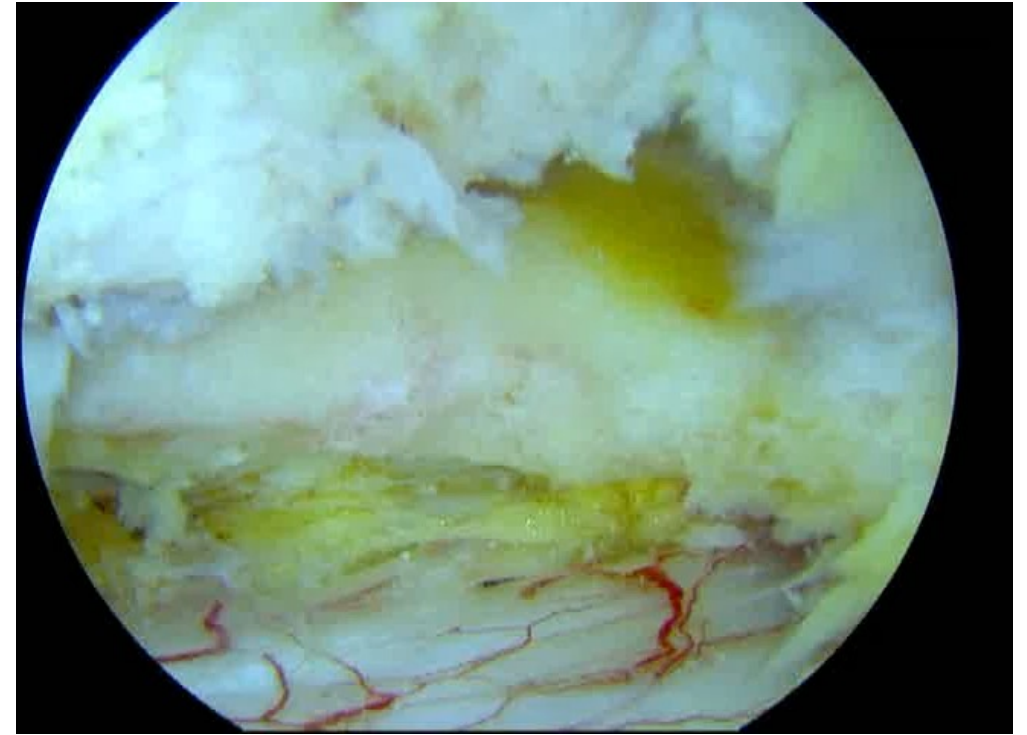
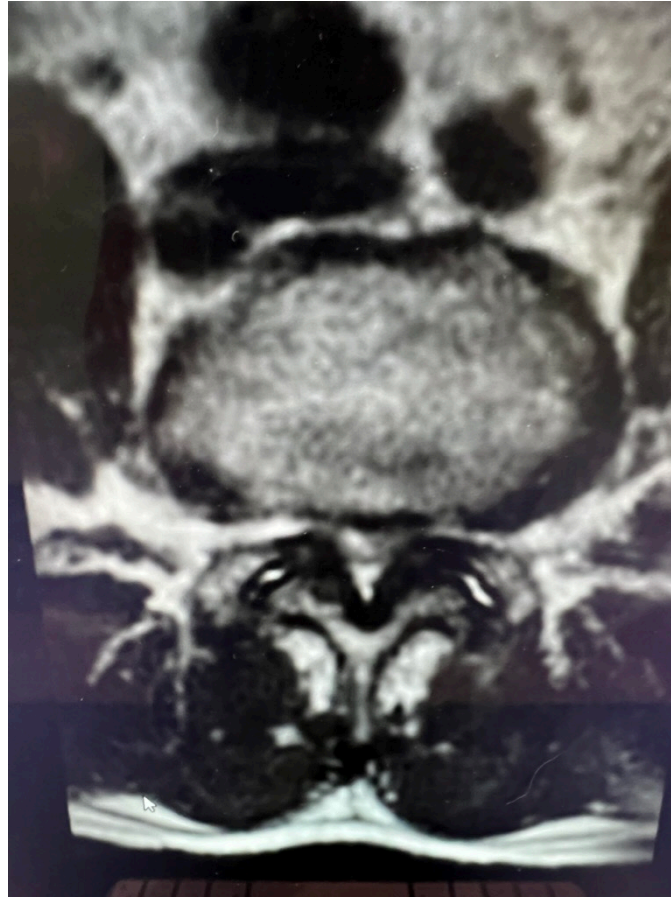
Discectomy



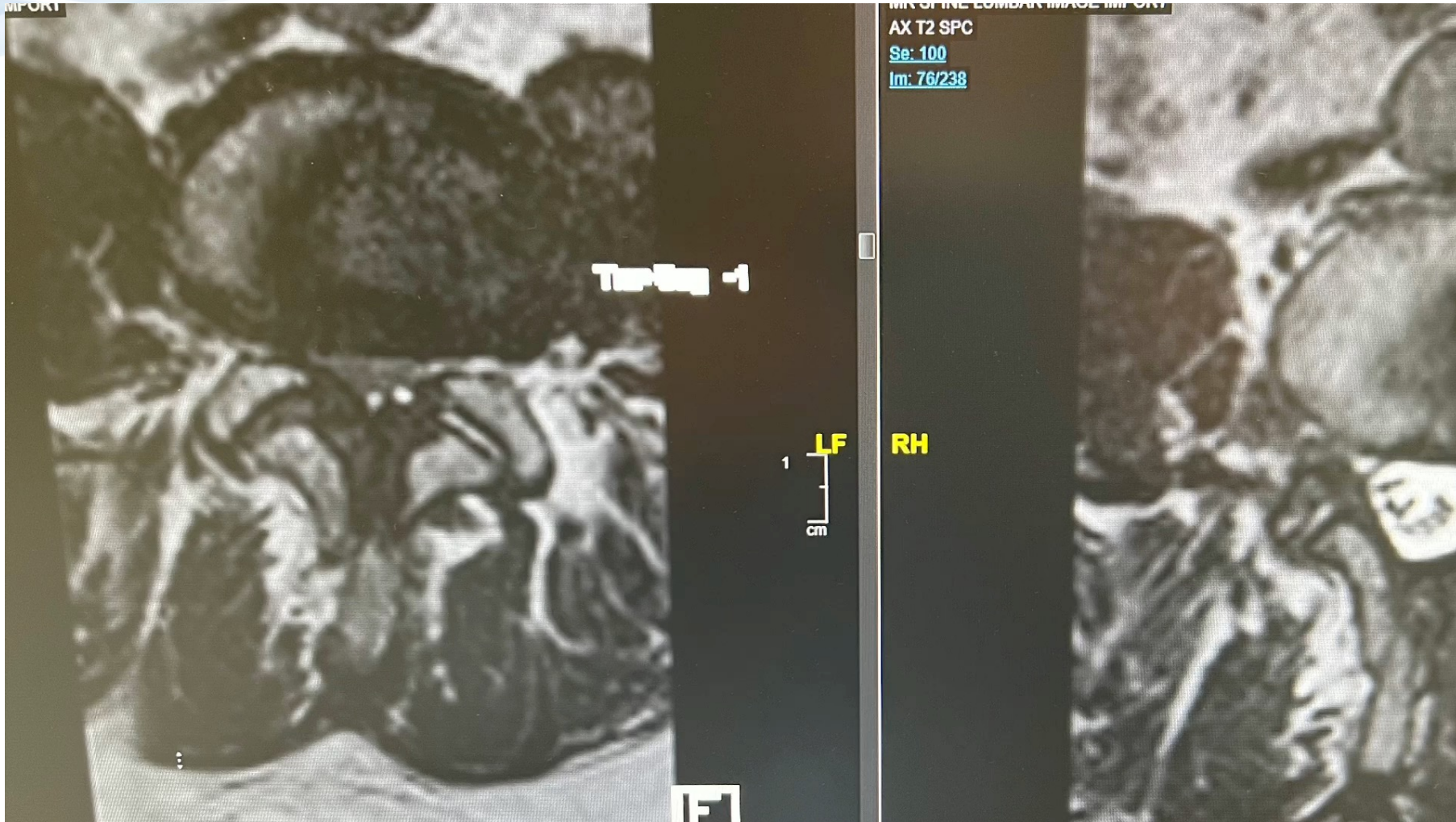
Laminotomy, Foraminotomy



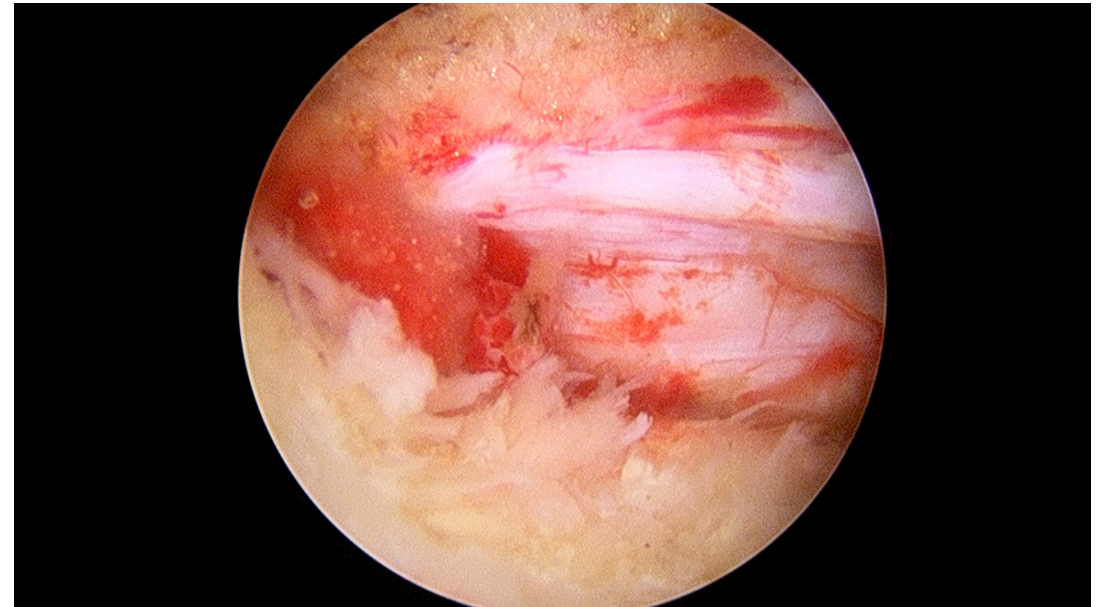
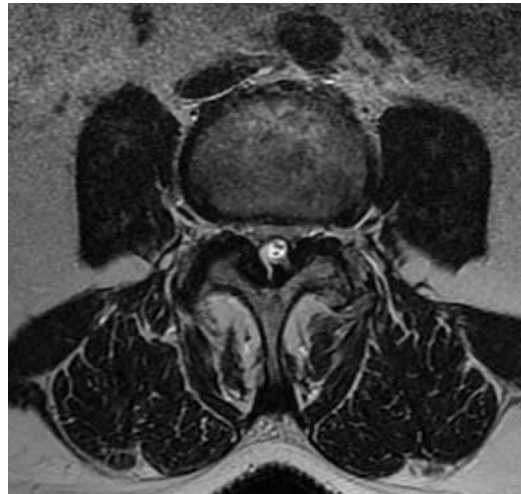
Unilateral Laminotomy, Bilateral Decompression



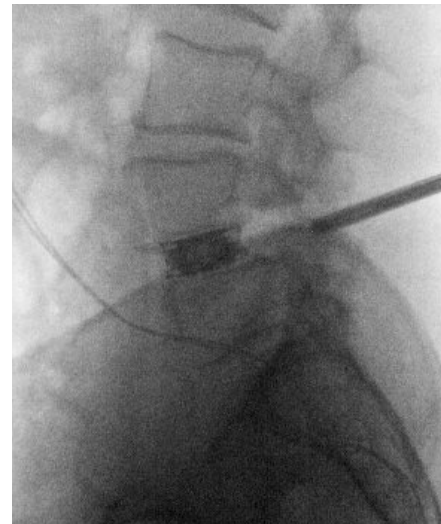
Unilateral Laminotomy, Bilateral Decompression



Synovial Facet Cyst

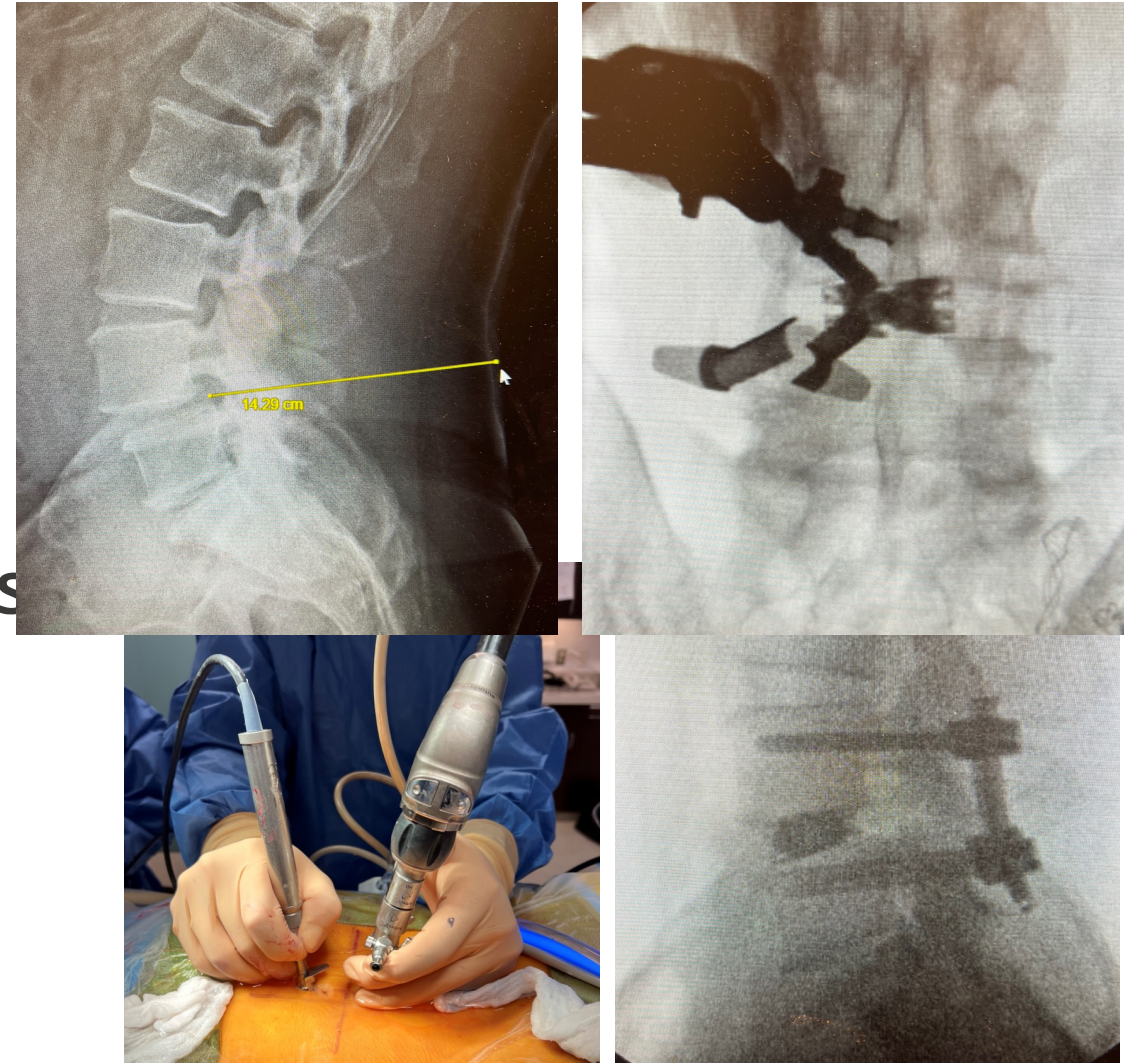


dualPortal + dualX TLIF = dualLIF



Morbid Obesity

- Surgery performed with the same size incisions as thin patients
- Potentially reduced infection and wound healing risk
- No need for large incisions to expose, long tubular retractors to visualize



dualPortal can be done in the ASC



UCLA Santa Monica Surgery Center

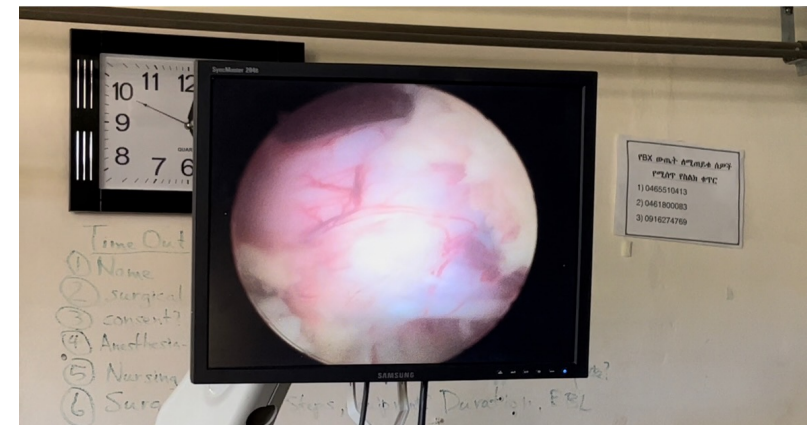
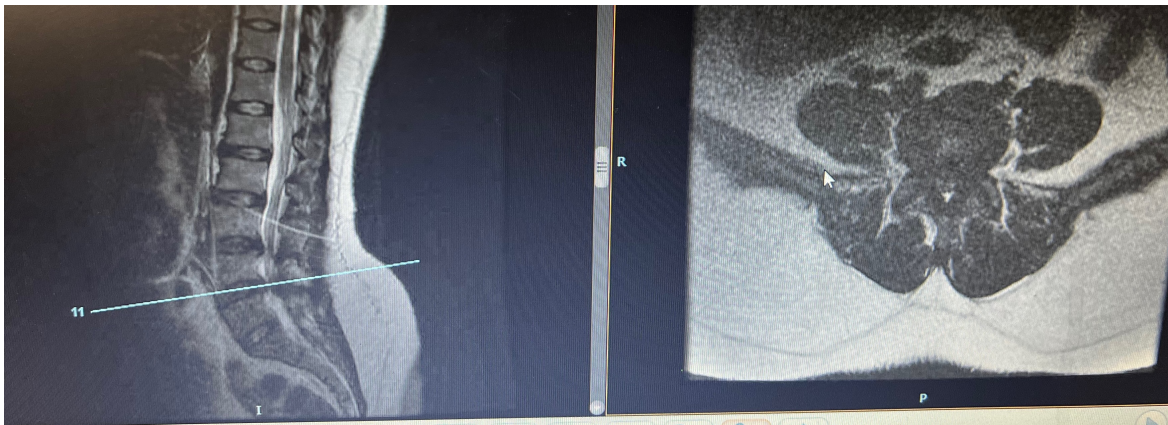


Center for Orthopaedic Surgery,
Van Nuys

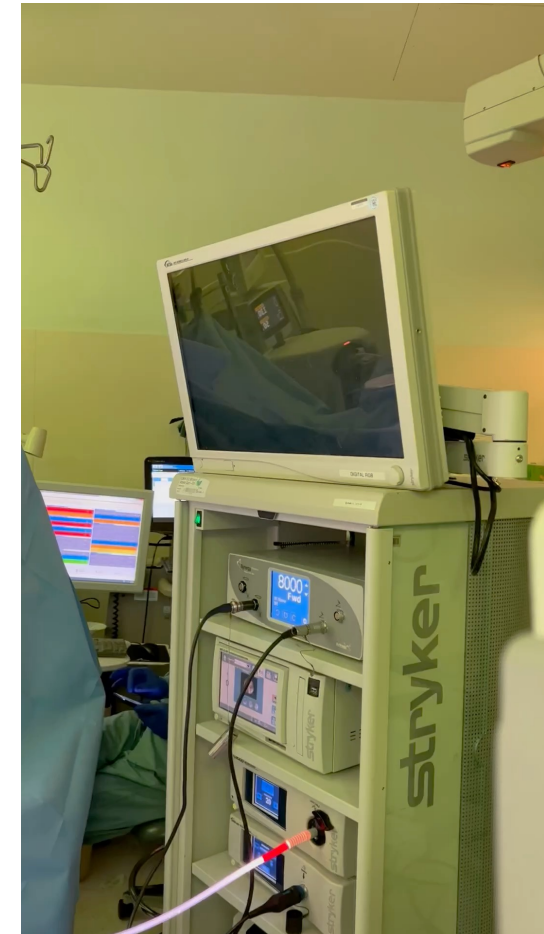


Surgery Center of South Bay,
Torrance

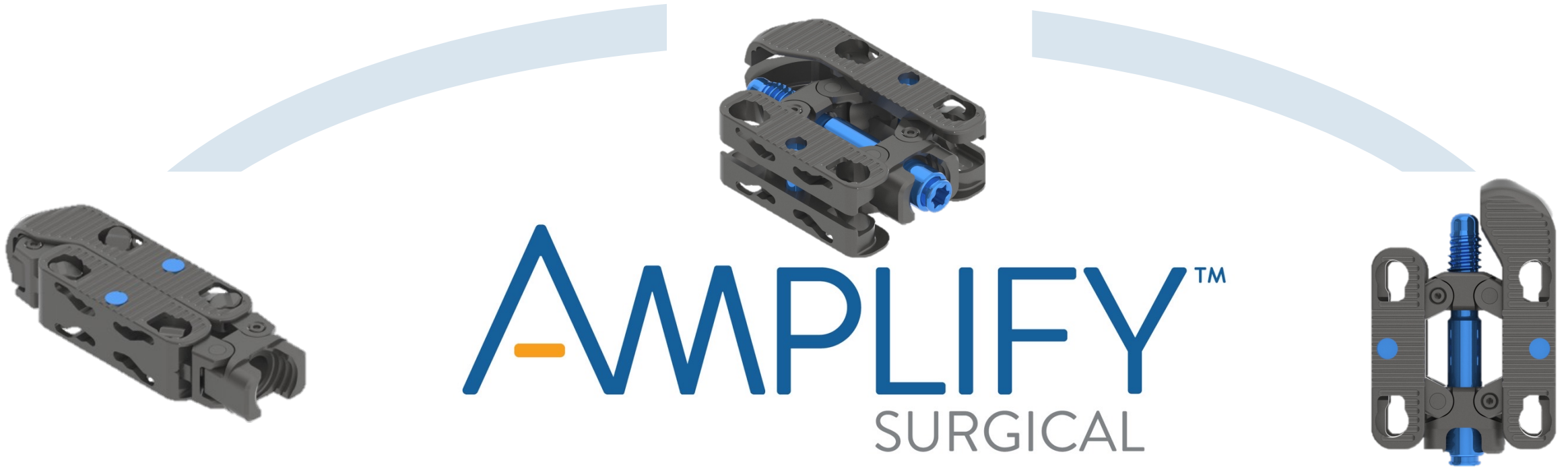
dualPortal can be done in Ethiopia



dualPortal is the Future



Let's get started!



Transforming the Ordinary