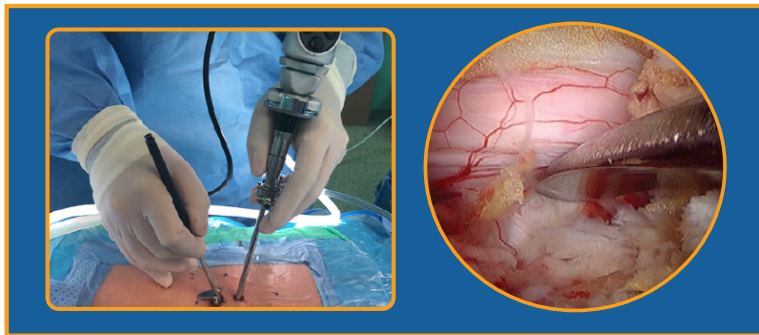




— dualPortal® —

HOW TO GET STARTED



Core Systems

1. Endoscope System w/ Light Source & Monitor
0-degree or 30-degree
2. Coblation Wand - 90-degree and 50-degree (optional)
3. Resection Bone Shaver - fluted tip, oval or round and built in suction
4. High-speed Surgical Drill with 3 or 4 mm Diamond Burr Tip
5. Irrigation Pump - Optional: gravity 1meter above the patients back

Spinal Instruments - Included in the dualPortal® Instrument Tray

1. Kerrison Rongeurs - 2mm or 3mm
2. Pituitary Rongeurs - straight/upwards, micro, and standard
3. Penfield Elevator - #2 and #4
4. Ball Tipped Probe - 90-degree
5. Nerve Retractors
6. Angled Curette - 2mm or 3mm

dualPortal® Access System - Included in the dualPortal® Instrument Tray

1. Muscle Detacher
2. Sequential Dilators
3. Spade (Annulotomy) Knife
4. Scope Cannula

dualPortal® Disposable Kit

1. dualPortal Cannulas - 30-100mm
2. dualPortal Hemostatic Agent Delivery Tube

Other Supplies

1. Drape with Fluid Catching Pouches
2. Marking Pen
3. Spinal Needles - 18G
4. Scalpel with #11 Blade
5. Hemostatic Agent