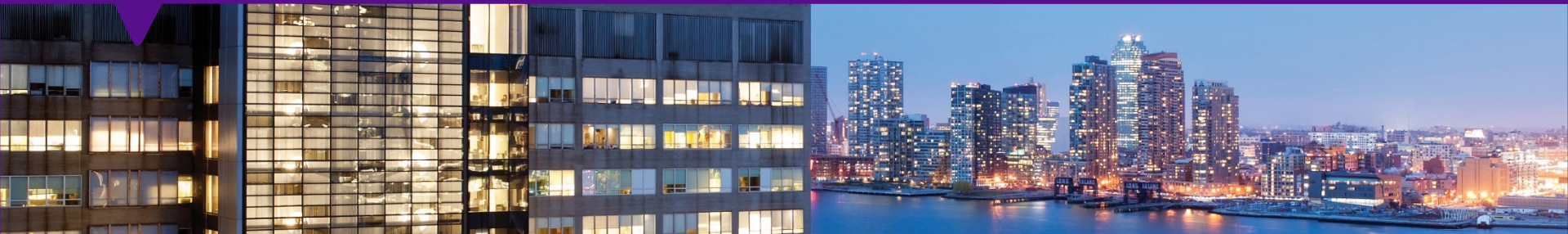


# DUALPORTAL MICRODISCECTOMY

Charla Fischer, M.D.

Associate Professor



# dualPortal Endoscopic Spine Surgery

- dualPortal: endoscopic viewing portal + working portal
  - Same surgery, same approach, same instruments
  - Same Indication
  - Different tool to visualize
  - Better view
  - Less post op pain
  - Less muscle damage
  - Less infection ( continuous irrigation)
  - “Anything you can do with the tube...”
  - Same result





**NYU Langone**  
Orthopedics

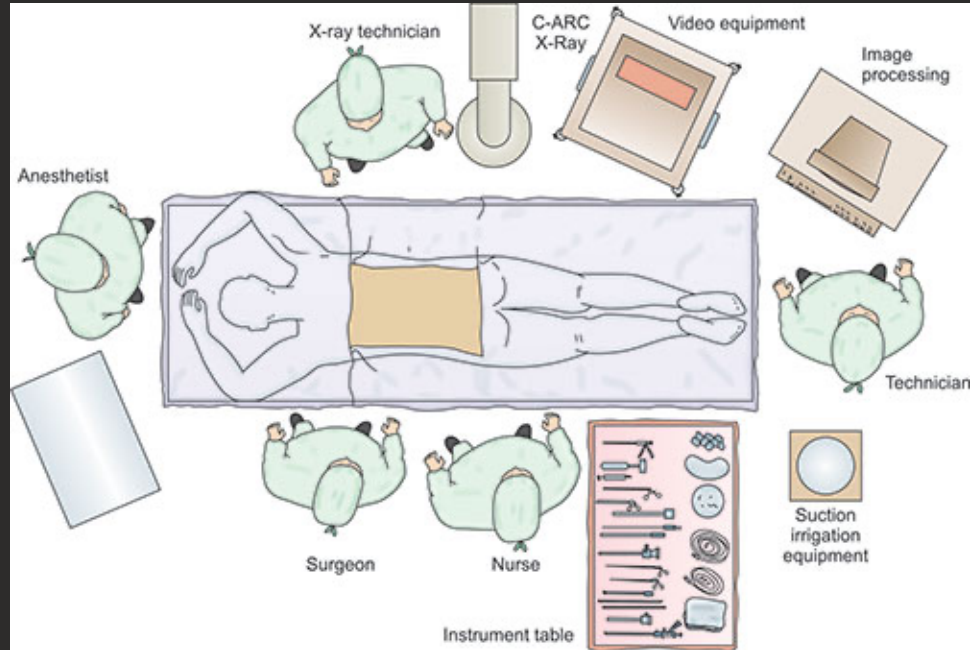
# Room Set up

# dualPortal Endoscopic Spine Surgery

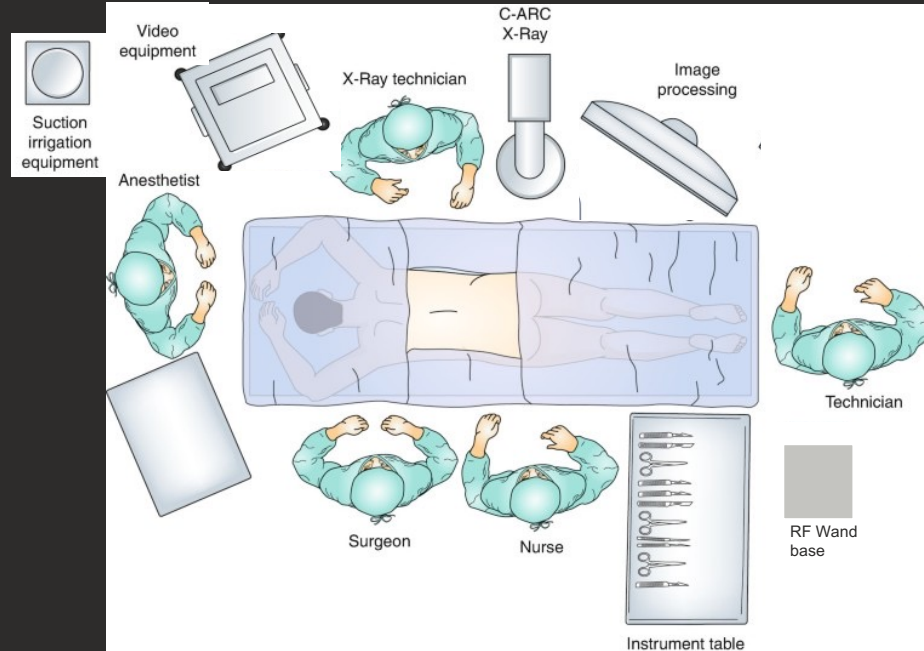
- Easy to start. No expensive equipment purchase necessary
- Arthroscopic equipment already exists in most hospitals and ASCs
- Basic spine instruments to perform most dualPortal surgeries
  - Lumbar disc herniation
  - Lumbar stenosis
  - Lumbar spondylolisthesis



# Room Set-up Options

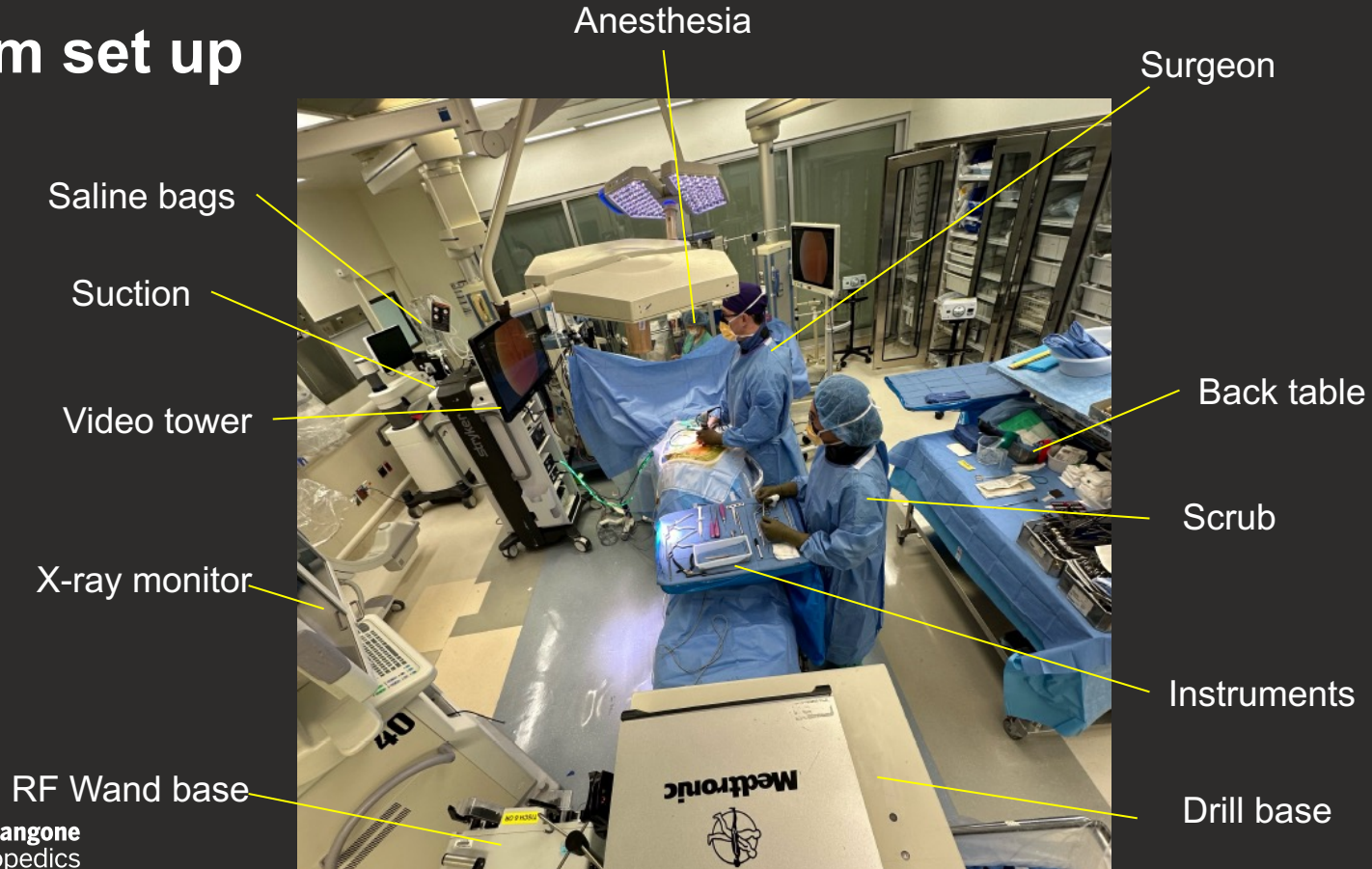


# My preference





# Room set up



# Room set up

Video tower

Saline bags

Suction

Anesthesia

X-ray monitor

RF wand base





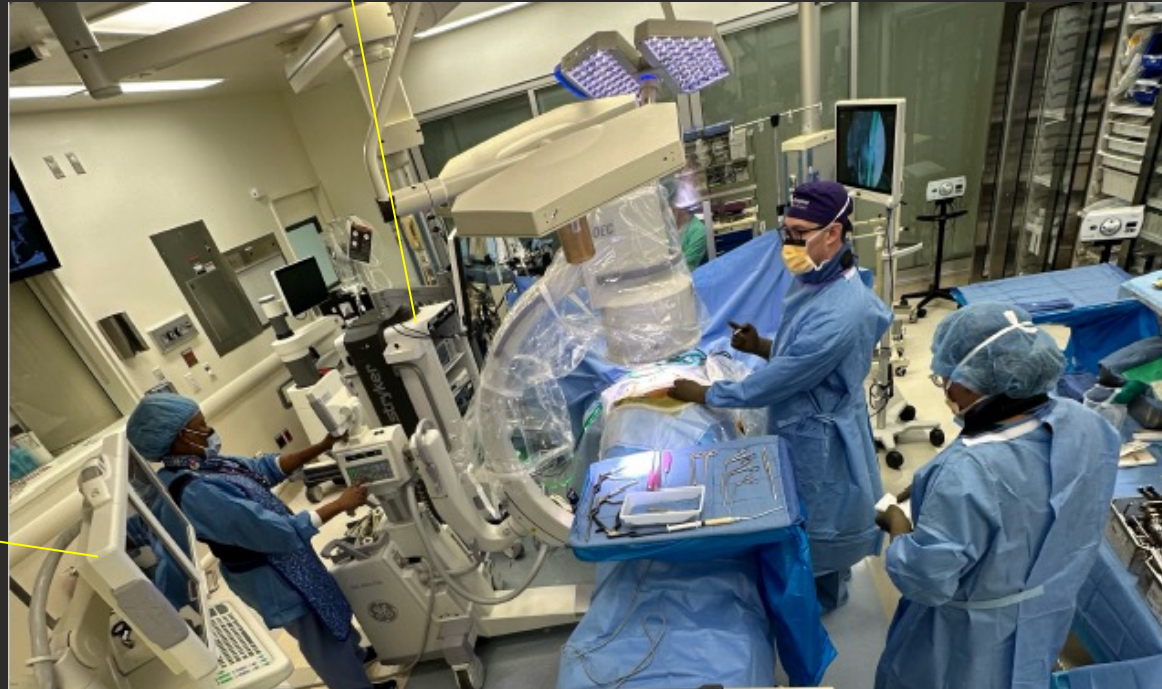
# Room Set up



# Space for X-ray

- Between video tower and x-ray monitor

Video tower



X-ray Monitor

# Using Navigation

Navigation  
Screen



Video  
tower



# Using Navigation

- View from Anesthesia

Navigation  
Screen



Video  
tower



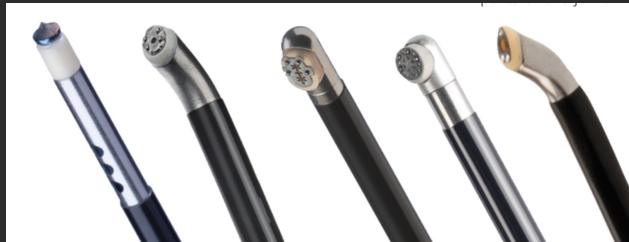
**NYU Langone**  
Orthopedics

# Equipment

# RF wand settings

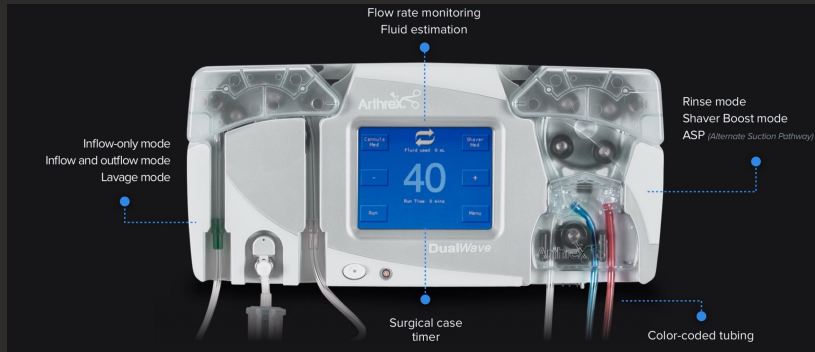


- Outside Canal
  - Ablate 7
  - Coag 2
- Inside Canal
  - Ablate 4
  - Coag 1



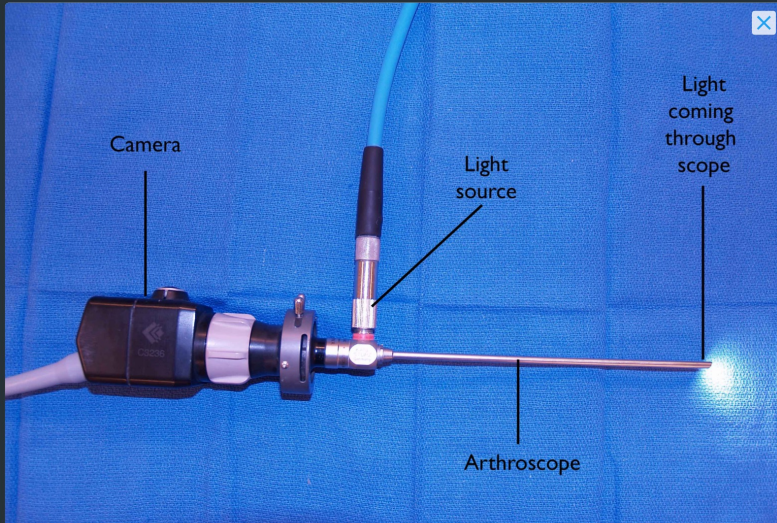


# Saline/Pump Settings



- 30mmHg pressure
- Can turn up to 50 briefly for bleeders
- Gravity
  - Start at around 5ft
  - Raise/lower as needed

# Camera



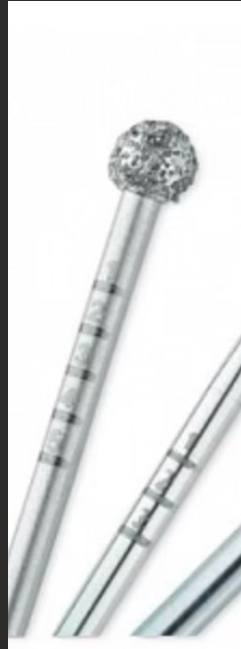
An arthroscope is a small, thin tube that is inserted into the body. A camera and light source are attached to the arthroscope.

- Blunt trochar for docking on lamina
- Sheath with water attached
- Zero degree scope

# Camera Trochar - Blunt



# Bur



# Shaver



# Camera, Trochar, and Saline



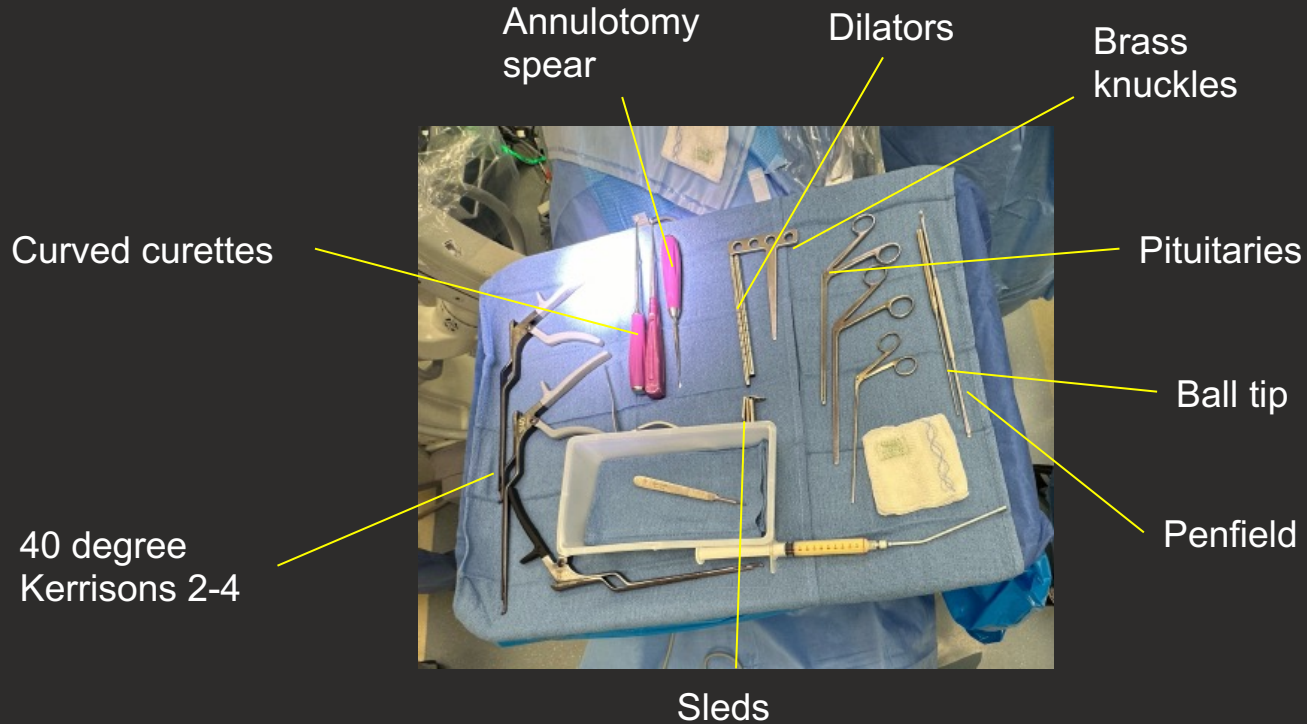


# Drape

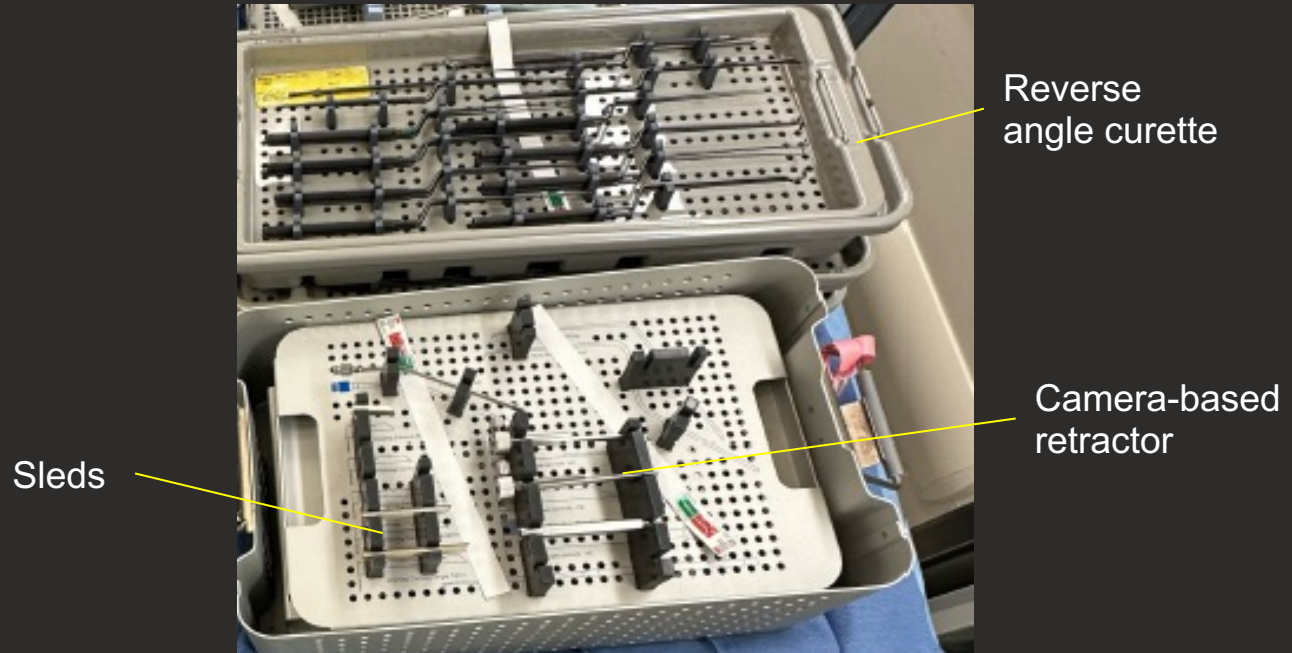
- Pouch on all sides to catch water
- Connected to suction



# Instruments



# Instruments



# New Instruments in dualPortal Set

## Sled



## Nerve Root Retractor



# Develop working area



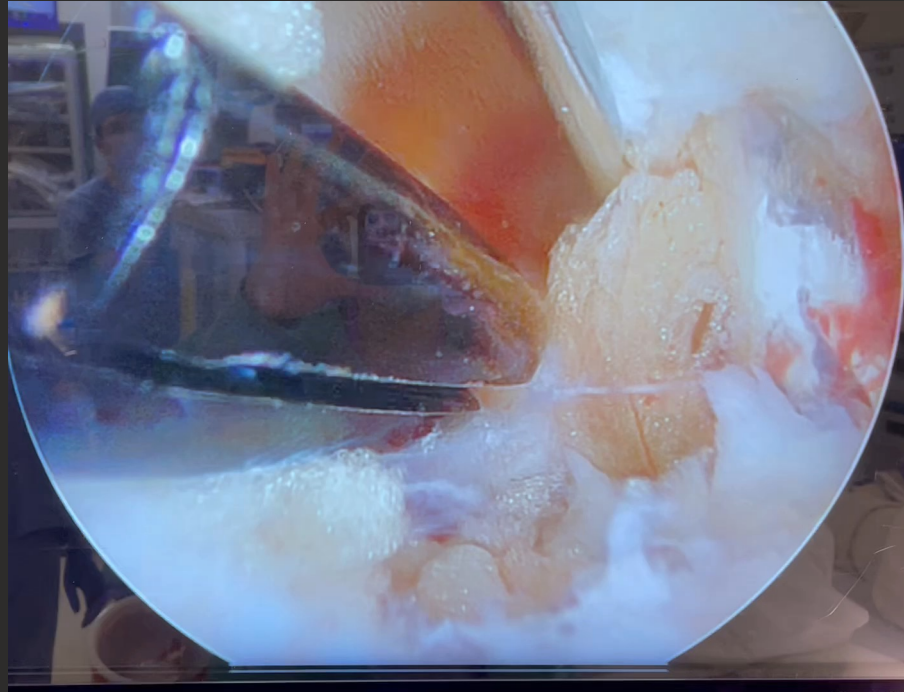


# Laminotomy





# Microdiscectomy





**NYU Langone**  
Orthopedics

**Thank You**

# NYU Langone Orthopedics

## By the Numbers



### CLINICAL CARE

**23,000+**

surgical  
procedures  
performed  
annually



**400,000+**

office visits annually

### ADVANCED TECHNOLOGY

12 robotics  
and navigation  
platforms systemwide



### EDUCATION

#### LARGEST AND ONE OF THE MOST DIVERSE

orthopedic residency  
programs in the  
United States



**87**

residents across  
two accredited programs

**21**

fellows across  
six specialty programs



### RESEARCH



**#8**

in NIH funding  
for orthopedic  
surgery



**350+**

peer-reviewed  
publications  
annually