

AMPLIFY™

SURGICAL

Transforming the Ordinary

3rd Annual
Dual Portal
Endoscopic Spine
Symposium

March 9, 2023
University of California, Irvine Medical Center Orange,
California

Transforming the Ordinary

Welcome to the 3rd Annual Dual Portal Symposium!

- Symposium Agenda
- Faculty Introductions
- Welcome Address

AMPLIFY[®] SURGICAL 3rd Annual Endoscopic Spine Symposium
Featuring dualPortal[®] and dualX[®]



Symposium Faculty

Expert faculty from the United States and South Korea will be on hand to present clinical outcomes of the novel two-portal endoscopic approach and dual expanding interbody implants with interactive sessions and a hands-on cadaver workshop.



Dr. Don Park
Orange, CA
Symposium Chair
UC Irvine
School of Medicine



Dr. Cheol Woong Park
Daejeon, South Korea
Daejeon Woori
Hospital



Dr. Dong Hwa Heo
Seoul, South Korea
Harrison Spinartus
Hospital



Dr. Samuel Cho
New York, NY
ICAHN School of
Medicine at Mount Sinai



Dr. Charla Fischer
New York, NY
NYU Grossman
School of Medicine



Dr. Ji Yeon Kim
Seoul, South Korea
Seran General
Hospital



Dr. Brian Kwon
Boston, MA
New England
Baptist Hospital



Dr. Ankit Mehta
Chicago, IL
University of
Illinois Health



Dr. Michael Oh
Orange, CA
UC Irvine
School of Medicine



Dr. Man Kyu Park
Busan, South Korea
Good Moonhwa
Hospital

Symposium Agenda

- **8am – 8:15am:** Getting started with dualPortal Endoscopic Spine Surgery - Samuel Cho, MD
- **8:15am – 8:30am:** What is dualPortal Endoscopic Spine Surgery and how does it differ from Uniportal Endoscopic Spine Surgery? - Brian Kwon, MD
- **8:30am – 8:45am:** dualPortal Endoscopic Spine Surgery – Discectomy: Equipment needed, how to set up the OR - Charla Fischer, MD
- **8:45am – 9am:** dualPortal Endoscopic Spine Surgery – ULBD: Principles, Anatomy, Workflow - Ankit Mehta, MD
- **9am – 9:15am:** Advanced dualPortal Endoscopic Technique for Precise Intradural Extramedullary Schwannoma Excision at L3-4 - Cheol Woong Park, MD
- **9:15am – 9:30am:** dualPortal Posterior Cervical Approaches - Dong Hwa Heo, MD
- **9:30am – 9:45am:** The Marriage of dualPortal + dualX TLIF: Amplify dualLIF – Don Young Park, MD
- **9:45am – 9:50am:** Presentations by sponsors
- **9:50am – 10:15am:** Break, EXHIBIT VIEWING

Symposium Agenda

- **10:30am – 12:30pm**, Lab #1, dualPortal TLIF (dualLIF) demonstration
- **12:45pm – 1:30pm**: Working Lunch/Presentations
 - **12:45pm – 12:55pm**: dualPortal Endoscopic Spine Surgery – Thoracic Laminectomy and Fusion - Ji Yeon Kim, MD
 - **12:55 pm – 1:05pm**: dualPortal Endoscopic Spine Surgery – Lumbar Central and Foraminal Stenosis - Man Kyu Park, MD
 - **1:05pm – 1:15pm**: How to avoid complications in dualPortal Spinal Endoscopy- Don Young Park, MD
- **1:30pm – 3:45pm**, Lab #2, dualPortal TLIF (dualLIF) Hands-On
- **3:45pm – 4pm**, Break, EXHIBIT VIEWING
- **4pm-6PM**, Lab #2, Additional dualPortal Hands-On

UC Irvine Health

- UCI Medical Center, Orange
 - Tertiary/Quaternary hospital
 - Only level 1 trauma center in OC
- UCI Medical Center, Irvine
 - Opening Spring 2024, Fall 2025
 - 1st all electric medical center in US
- UCI Health Expansion in OC in 2024



UCI Health

Medical Services Find a Provider Patients & Visitors Locations **News & Blog** Events About Us

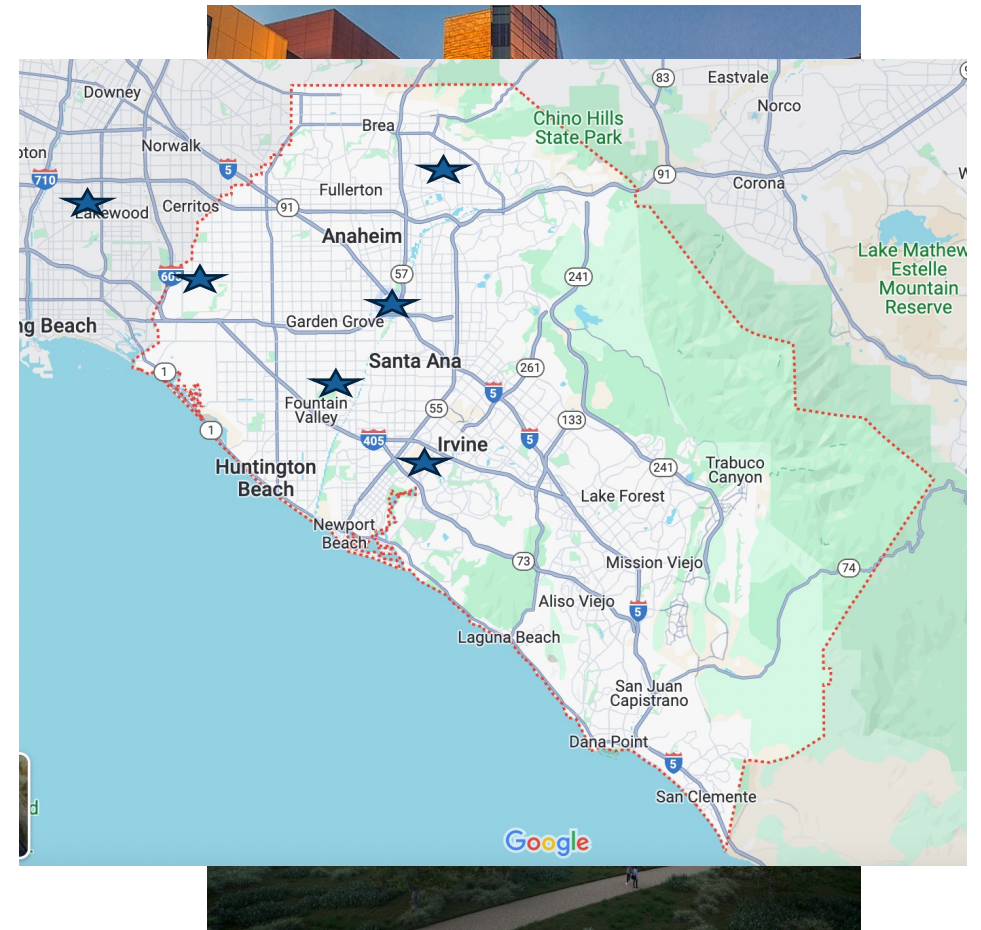
Home > News > UCI Health reaches definitive agreement to acquire four Southern California hospitals from Tenet Healthcare Corporation

UCI Health reaches definitive agreement to acquire four Southern California hospitals from Tenet Healthcare Corporation

Acquisition of Tenet's Pacific Coast Network would expand unrestricted access to healthcare for Orange County and beyond

News Archive

- 2024
- 2023
- 2022
- 2021
- 2020
- 2019
- 2018

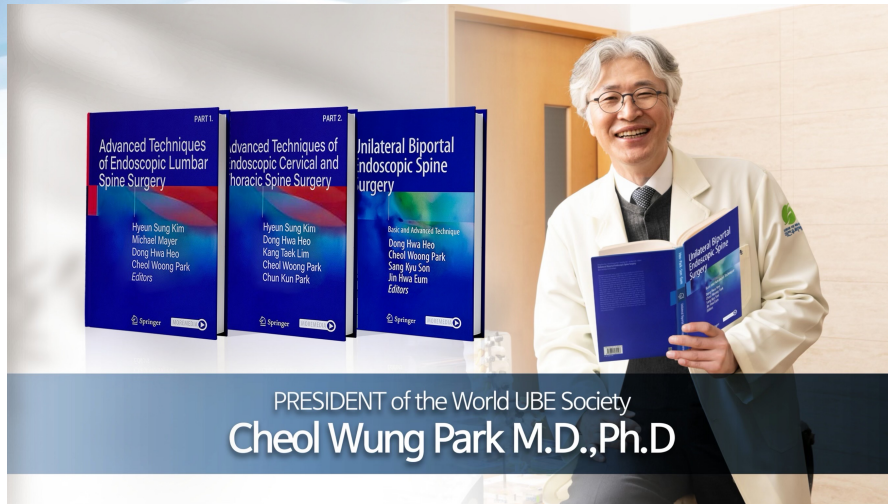


Don Young Park, M.D.



- Professor of Orthopaedic Surgery at UCI
- Director of the Advanced Endoscopic and Outpatient Spine Program
- Published multiple journal and textbook publications in dualPortal spinal endoscopy
- Medical school at UCSD
- Trained at Stanford for orthopaedic surgery and spine surgery fellowship

Cheol Woong Park, M.D.



- Hospital President, Daejeon Woori Hospital
- Past President of World UBE Society
- Current President of Korean Minimally Invasive Spine Surgery Research Society
- Completed > 2000 dualPortal cases
- One of the original pioneers of the dualPortal technique

Dong Hwa Heo, M.D., Ph.D.



- Department of Neurosurgery, Harrison Spinaartus Hospital Chungdam
- Current President of World UBE Society
- Published > 50 original papers and multiple textbooks on dualPortal spinal endoscopy
- One of the original pioneers of the dualPortal technique

Ji Yeon Kim, M.D.



- Chief of Endoscopic Spine Surgery Center, Seran General Hospital, South Korea
- Director of Seran Endoscopic Spine Surgery Research Center
- Academic Director, World UBE Society
- Medical school and neurosurgery residency at Konyang University, Daejeon, South Korea
- Fellowship at Bonn University Hospital, Germany
- Multiple journal and textbook publications on dualPortal spinal endoscopy

Man Kyu Park, M.D.



- Good GangAn Hospital, Busan, South Korea
- Medical school at Kyungpook National University, Daegu, South Korea
- Neurosurgery residency and spine fellowship at Kyungpook National University Hospital
- Multiple journal and textbook publications on dualPortal spinal endoscopy

Brian Kwon, M.D.



- Assistant Clinical Professor at Tufts University School of Medicine
- New England Baptist Hospital
- Orthopaedic surgery residency at University Hospitals of Cleveland
- Fellowship at New England Baptist Hospital

Sam Cho, M.D.



- Chief of Spine Surgery at Mount Sinai West
- Director of Spine Surgery Fellowship
- Professor of Orthopaedic Surgery at the Icahn School of Medicine at Mount Sinai.
- Medical school in Washington University School of Medicine
- Orthopaedic surgery residency at Columbia
- Fellowship at Washington University

Charla Fischer, M.D.



- Associate Professor of Orthopaedic Surgery at NYU
- Associate Director, Spine Surgery Fellowship Program
- Director of Quality and Patient Safety, Division of Spine Surgery
- Medical school at USC
- Orthopaedic Surgery residency at Columbia
- Fellowship, NYU Hospital for Joint Disease

Ankit Mehta, M.D.



- Associate Professor of Neurosurgery at University of Illinois, Chicago
- Associate Program Director
- Director of Spinal Oncology
- Medical school at Harvard
- Neurosurgery residency at Duke
- Fellowship at Johns Hopkins University

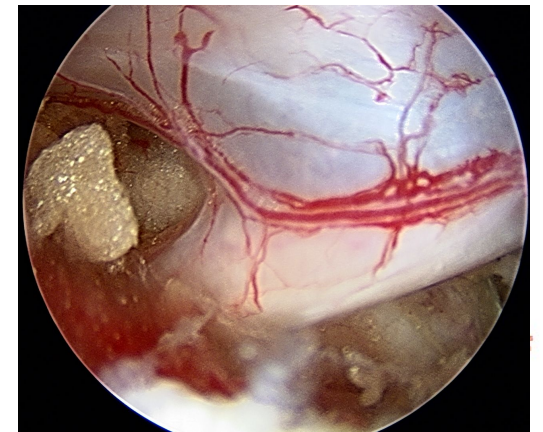
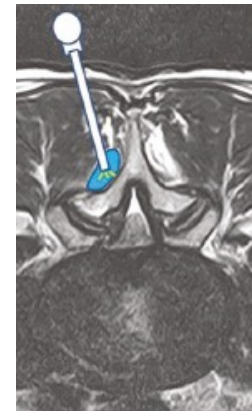
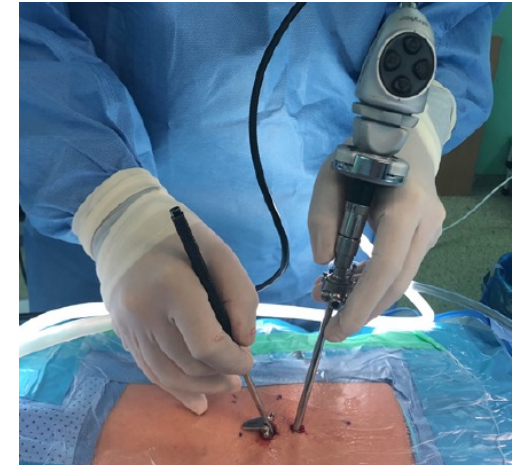
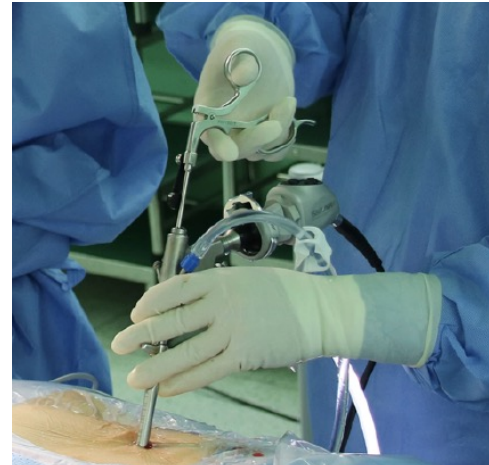
Michael Oh, M.D.



- Professor of Neurosurgery at UCI
- Vice Chair of Education
- Director of Spine Services
- Medical school at USC
- Neurosurgery residency at Allegheny General Hospital
- Fellowship at Toronto Western Hospital

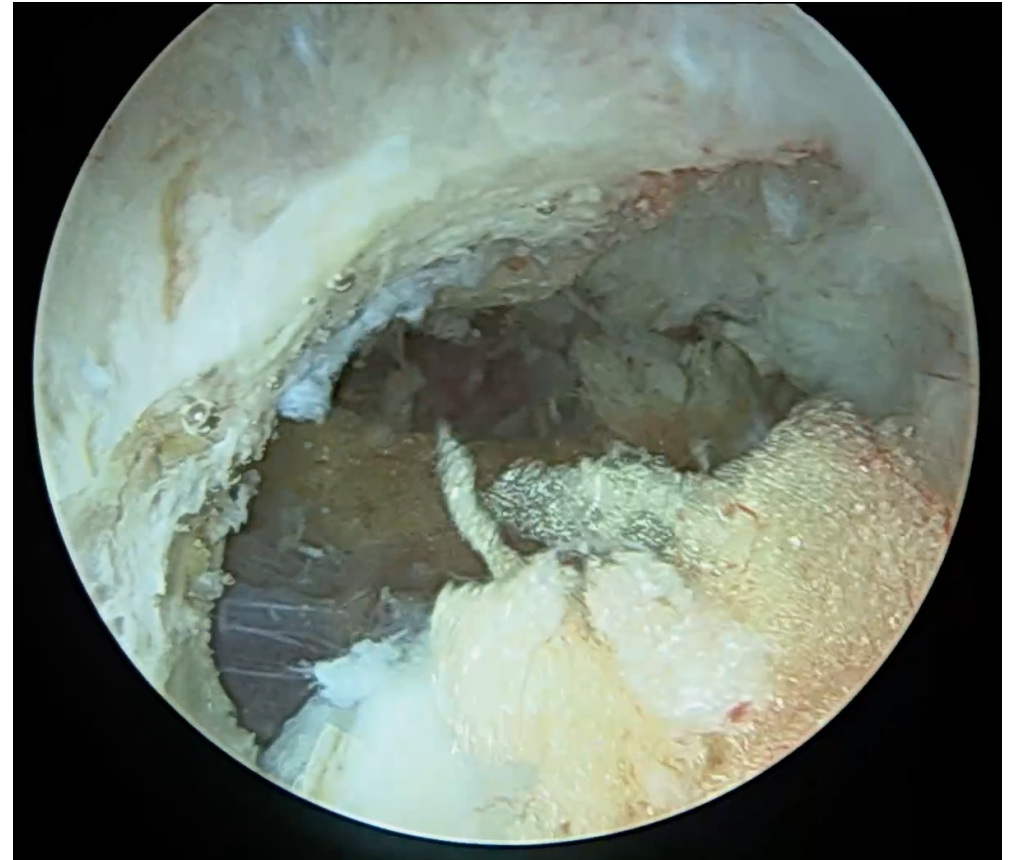
Endoscopic Spine Surgery

- Uniportal and dualPortal
- Water based endoscopy
 - Working space exploits a potential space in the spine
 - Creating water bubble over the lamina
 - Constant inflow and outflow of irrigation
 - Optimizes visualization



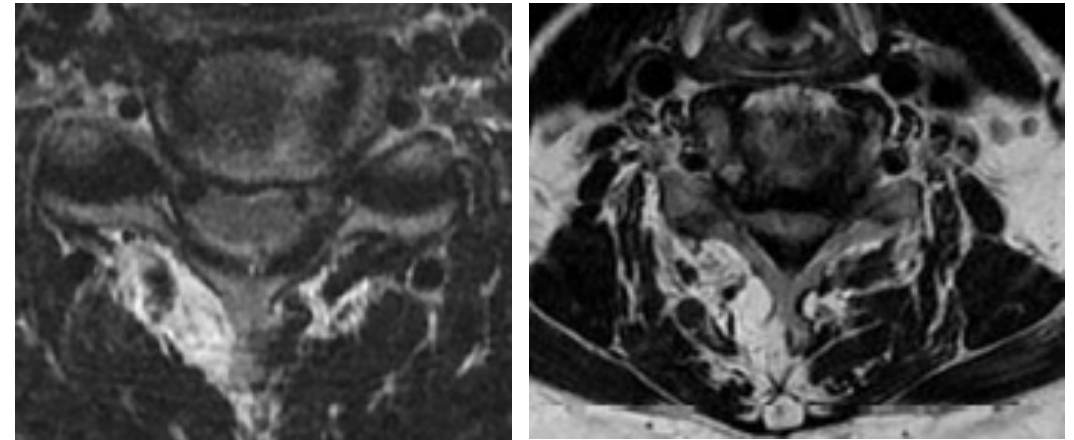
dualPortal Spinal Endoscopy

- **dualPortal: endoscopic viewing portal + separate working portal**
 - Decouples of the endoscopic camera with the surgical instruments
 - 4 mm HD scope can access previously hard to reach areas
 - Enhanced visualization, greater flexibility and versatility



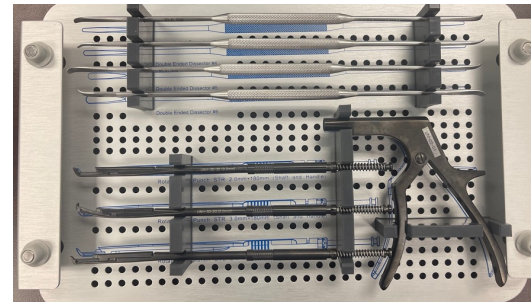
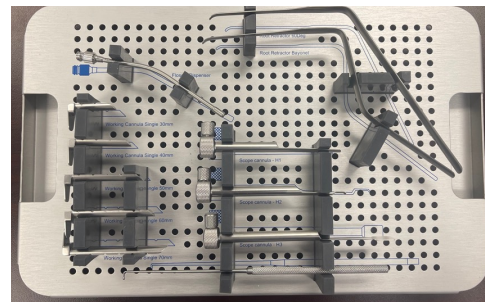
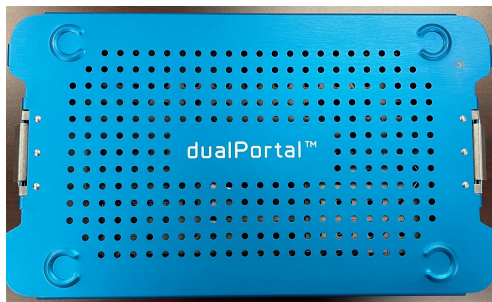
Wide Ranging Indications

- Lumbar
 - Lumbar disc herniation
 - Lumbar stenosis
 - Lumbar spondylolisthesis
- Cervical (off-label)
 - Foraminal stenosis
 - Cervical stenosis
- Thoracic (off-label)
 - Thoracic disc herniations
 - Thoracic stenosis
 - OLF



Perfect for the Outpatient ASC Setting

- Easy to start in ASC
- Arthroscopic equipment already exists in most ASCs
- Basic spine instruments to perform most dualPortal surgeries



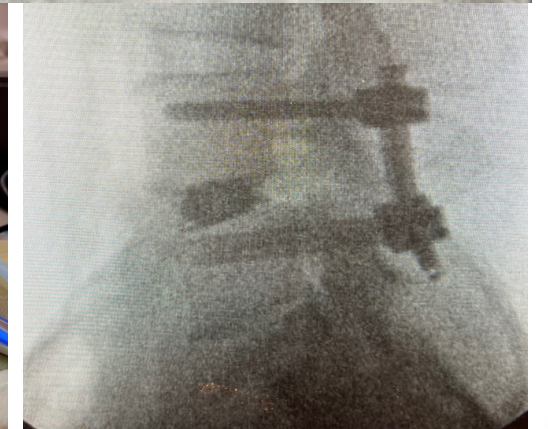
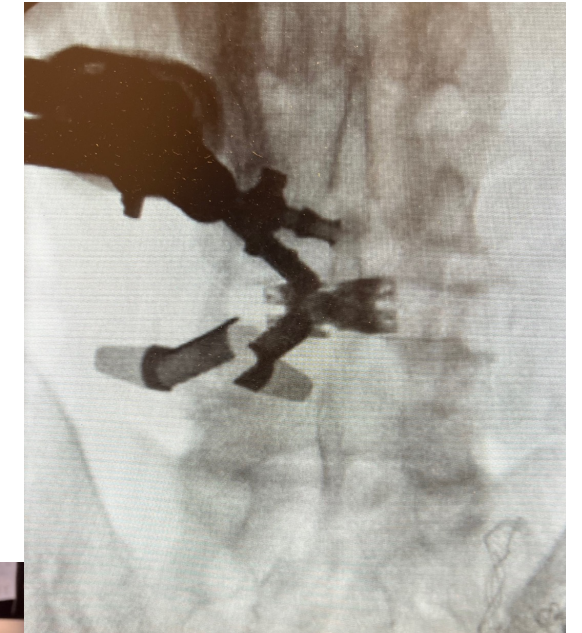
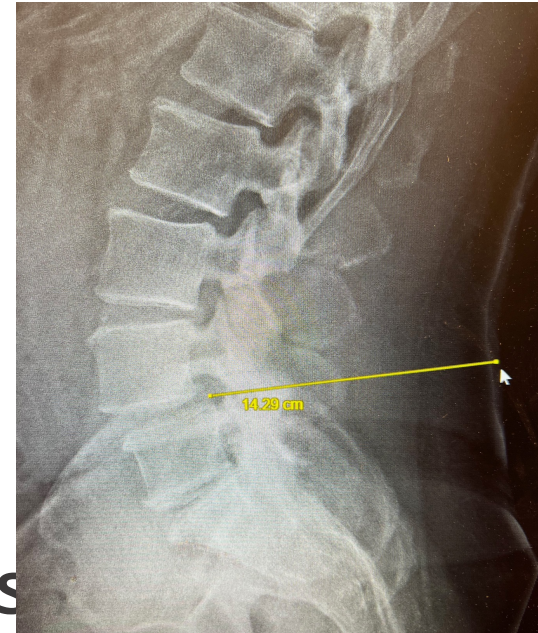
Advantages of dualPortal Spinal Endoscopy

- **Built for interlaminar work**
 - Central stenosis
 - Synovial facet cyst
- **Cross court action**
 - Lateral recess stenosis
 - Foraminal stenosis
- **Versatile**
 - Access to L5-S1
 - Revision cases



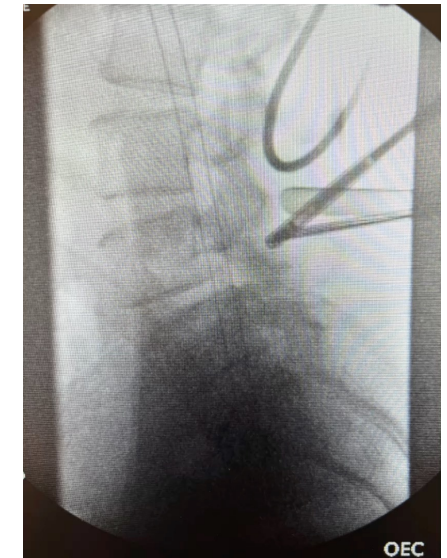
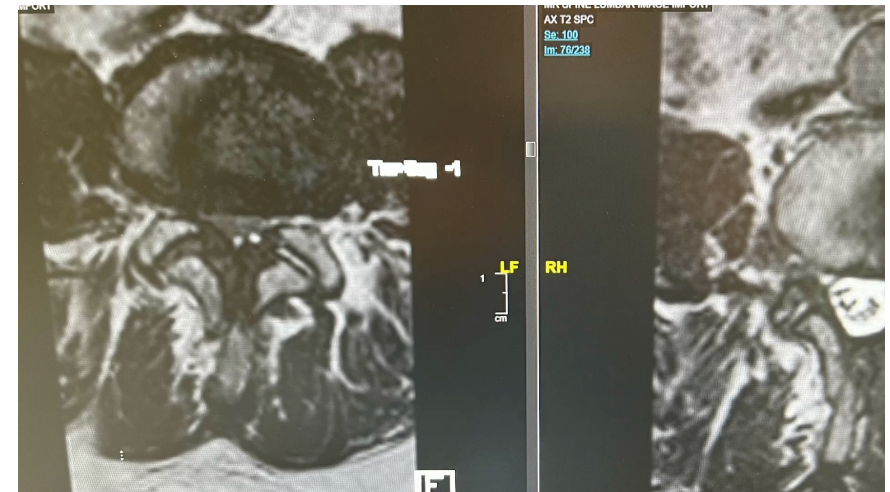
Morbid Obesity

- Surgery performed with the same size incisions as thin patients
- Potentially reduced infection and wound healing risk
- No need for large incisions to expose, long tubular retractors to visualize



What's the Role of dualPortal?

- Interlaminar decompression
- dualLIF: dualPortal + dualX TLIF
- Just as safe and effective as microscopic and uniportal techniques



Learn Endoscopy the Right Way

- Live surgery observation, cadaver experience
 - Learn from the masters
 - Dual Portal Symposium
- Network of endoscopic masters
- Plan to create US-Korea alliance for education and research

**3RD ANNUAL AMPLIFY SURGICAL®
ENDOSCOPIC SPINE SYMPOSIUM
FEATURING dualPortal AND dualX TECHNOLOGIES**
MARCH 9, 2024 | ORANGE, CA

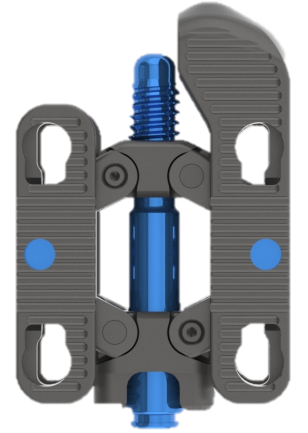
Meet Our Symposium Faculty

 Dr. Don Y. Park UC Irvine School of Medicine Orange, CA	 Dr. Cheol Woong Park Daejeon Woon Hospital Daejeon, South Korea	 Dr. Dong Hwa Heo Harrison Spine&Hospital Seoul, South Korea
 Dr. Sam K. Cho Icahn School of Medicine at Mount Sinai New York, NY	 Dr. Charla R. Fischer NYU Grossman School of Medicine New York, NY	 Dr. Yong H. Kim NYU Grossman School of Medicine New York, NY
 Dr. Brian Kwon New England Baptist Hospital Boston, MA	 Dr. Ankit I. Mehta University of Illinois Hospital Chicago, IL	 Dr. Michael Oh UC Irvine School of Medicine Orange, CA

2023 대한최소침습척추학회
제22차 정기학술대회 & Cadaver Workshop Gala Dinner



Let's get started!



AMPLIFY™

SURGICAL

Transforming the Ordinary