

# WELCOME



## TO THE 4<sup>TH</sup> ANNUAL AMPLIFY SURGICAL ENDOSCOPIC SPINE SYMPOSIUM featuring dualPortal<sup>®</sup> and dualX<sup>®</sup>SLIM technologies

Amplify Surgical would like to welcome you to our 4th Annual Endoscopic Spine Symposium at the University of California, Irvine (UCI) Medical Center. The Symposium will offer a comprehensive understanding of our dualPortal and dualXslim technologies through broad-gauging lectures, as well as a hands-on cadaver workshops. Leading the Symposium will be thirteen of the most prominent spine Experts from both, the United States and South Korea, who are here to present, demonstrate, and guide you through these innovative technologies and techniques. Please look forward to our cadaver labs, where our expert Faculty will demonstrate and then administer in-depth instruction on the novel two-portal endoscopic approach (dualPortal) and the newest dual-expanding interbody implant (dualXslim). We hope that by experiencing first-hand just how powerful our dualPortal and dualXslim technologies are, you will be inspired to incorporate these ultra-minimally invasive tools into your practices.

Dr. Don Park, our Symposium Chair, is Clinical Professor and Director of the Advanced Endoscopic and Outpatient Spine Program at University of California, Irvine Medical Center. We are honored to celebrate his Chairmanship and our partnership with UCI Medical Center for this 4th Annual Endoscopic Spine Symposium.

Over the past year, the dualPortal and dualXslim technologies have seen tremendous expansion amongst U.S. practitioners and increased interest in the international community. In response to this rapidly growing interest, we have established bespoke regional training across the country and have welcomed countless physicians into our dualPortal and dualXslim communities. We are proud to have members from these communities serve as our esteemed faculty.

Thank you for joining us at the 4th Annual Amplify Surgical Endoscopic Spine Symposium featuring dualPortal and dualXslim technologies. Events such as this are integral to revolutionizing the world of minimally invasive spine surgery, and we are incredibly grateful for those who choose to attend and contribute to our symposia. We would also like to thank our corporate sponsors for supporting today's event. Lastly, we would like to recognize the following for their invaluable contributions to the 4th Annual Amplify Surgical Endoscopic Spine Symposium: our visiting Symposium Faculty, Dr. Don Park (Symposium Chair), UCI Medical Center, the UCI Department of Orthopaedic Surgery, and the UCI Surgical Skills Laboratory.

**About Amplify Surgical<sup>®</sup>, Inc.:** Amplify Surgical<sup>®</sup> is a privately-held spinal device company located in Irvine, CA. Our mission is to revolutionize minimally-invasive spine surgery by transforming ordinary procedures with groundbreaking surgical solutions that improve patient safety and outcomes.

# 4<sup>th</sup> Annual Endoscopic Spine Symposium featuring dualPortal<sup>®</sup> and dualX<sup>®</sup> SLIM technologies

March 29, 2025

University of California, Irvine Medical Center

Transforming the Ordinary

# Welcome to the 4<sup>th</sup> Annual Endoscopic Spine Symposium!

- Symposium Agenda
- Faculty Introductions
- Welcome Address



# Symposium Agenda

- **8am – 8:15am:** Getting Started with dualPortal Endoscopic Spine Surgery - Samuel Cho, MD
- **8:15am – 8:30am:** What is dualPortal Endoscopic Spine Surgery and How Does it Differ from Uniportal Endoscopic Spine Surgery? – Jon J. W. Yoon, MD
- **8:30am – 8:45am:** dualPortal Endoscopic Spine Surgery – Discectomy: Equipment Needed, How to Set Up the OR - Charla Fischer, MD
- **8:45am – 9am:** dualPortal Endoscopic Spine Surgery – ULBD: Principles, Anatomy, Workflow – Andrew Chung, DO
- **9am – 9:15am:** Enblock Removal of Ligamentum Flavum Including Thoracic Spine - Cheol Woong Park, MD
- **9:15am – 9:30am:** Basic and Advanced Technique of dualPortal Endoscopic TLIF - Dong Hwa Heo, MD
- **9:30am – 9:45am:** The Marriage of dualPortal + dualXSlim: Amplify dualLIF and dualPortal 2.0 – Don Young Park, MD
- **9:45am – 9:50am:** Presentations by Sponsors
- **9:50am – 10:15am:** Break, EXHIBIT VIEWING



# Symposium Agenda

- **10:15am – 12:30pm:** Lab #1 - dualPortal TLIF (dualLIF) Demonstration
- **12:30pm – 1:30pm:** Working Lunch/Presentations
  - **12:40pm – 12:50pm:** What is the best Way to Learn dualPortal? – Ki Eun Chang, MD
  - **12:50 pm – 1:00pm:** dualPortal Endoscopic Decompression for Bertolotti Syndrome, Far-Out Syndrome – Nam Lee, MD
  - **1:00pm – 1:10pm:** dualPortal Endoscopic Posterior Cervical Foraminotomy – Man Kyu Park, MD
  - **1:10pm – 1:20pm:** Pearls and Pitfalls to Overcome Learning Curves for dualPortal Lumbar Fusion – Young San Ko, MD
  - **1:20pm – 1:30pm:** Early Experience with dualPortal Endoscopic Spine Surgery – Sohaib Hashmi, MD
  - **1:30pm – 1:35pm:** Presentations by Sponsors
- **1:35pm – 3:45pm:** Lab #2 - dualPortal TLIF (dualLIF) Hands-On
- **3:45pm – 4pm:** Break, EXHIBIT VIEWING
- **4pm-6pm:** Lab #3, Additional dualPortal TLIF (dualLIF) Hands-On



# Don Young Park, M.D.



- Symposium Chair
- Clinical Professor
- Advanced Endoscopic and Outpatient Spine Program Director
- UCI Department of Orthopaedic Surgery
- Orange, CA

# Cheol Woong Park, M.D., Ph.D.



- Hospital President, Daejeon Woori Hospital
- President of Korean Minimally Invasive Spine Society (KOMISS)
- Completed 4000+ dualPortal<sup>®</sup> cases
- One of the original pioneers of the dualPortal<sup>®</sup> technique
- Daejeon, South Korea

# Dong Hwa Heo, M.D., Ph.D.



- Harrison Spinartus Hospital
- President of The World Unilateral Biportal Endoscopy Society (WUBES)
- Published 50+ original papers on dualPortal<sup>®</sup> spinal endoscopy
- One of the original pioneers of the dualPortal<sup>®</sup> technique
- Seoul, South Korea



# Charla Fischer, M.D.



- Chief of Orthopedics for Tisch Hospital and Kimmel Pavilion at NYU Langone Hospital
- Director of Quality and Patient Safety in the Division of Spine Surgery
- New York, NY

# Samuel Cho, M.D.



- Chief of Spine Surgery at Mount Sinai West and Director of Spine Surgery Fellowship
- Professor in the Department of Orthopaedic Surgery and Neurosurgery at the ICAHN School of Medicine at Mount Sinai
- New York, NY

# Jon J.W. Yoon, M.D., Ph.D.



- Director of Minimally Invasive Spine Surgery at University of Pennsylvania
- Co-Director of Complex Spine Surgery Fellowship
- Assistant Professor of Neurosurgery at the Hospital of the University of Pennsylvania
- Philadelphia, PA

# Nam Lee, M.D., Ph.D.



- Department of Neurosurgery
- Yonsei Cheok Hospital
- Busan, South Korea

# Man Kyu Park, M.D., Ph.D.



- Busan Hu Hospital
- Author of multiple publications on dualPortal<sup>®</sup> techniques
- Busan, South Korea

# Andrew Chung, D.O.



- Clinical Assistant Professor at University of Arizona School of Medicine
- Clinical Faculty at Midwestern University
- Banner Health Hospital, Arizona
- Phoenix, AZ

# Ki Eun Chang, M.D.



- Staff Neurosurgeon at Naval Hospital Balboa
- Several publications on dualPortal spine endoscopy
- San Diego, CA

# Meng Huang, M.D.



- Assistant Professor of Clinical Neurosurgery at Houston Methodist Hospital
- Specialist Registrar at St. George's Hospital, London
- Houston, TX



# Sohaib Hashmi, M.D.



- Assistant Professor of orthopaedic surgery at UCI School of Medicine
- Assistant Professor of neurological surgery at UCI School of Medicine
- Director of spine trauma at UCI Health
- Orange, CA

# Young San Ko, M.D., Ph.D.



- Spine surgeon at Kyungpook National University Hospital
- Assistant Professor of spine and pain surgery at Keimyung University
- Daegu, South Korea

# Introduction from Symposium Chair



Dr. Don Park  
SYMPOSIUM CHAIR

As the symposium chair for the past 4 years, I have witnessed the great interest and enthusiasm for dualPortal spinal endoscopy grow year after year. Now in our 4th symposium, I am very eager to share the dualPortal endoscopic technique, which I believe is the future of minimally invasive spine surgery. I believe that one day dualPortal will be more ubiquitous and commonplace as one of the main techniques used in spine surgery.

The dualPortal approach is a truly enabling technique that significantly improves the visualization and magnification of the surgical anatomy. The dualPortal approach reduces the learning curve experienced with other endoscopic techniques because the visualization of the anatomy is so familiar. Once you see the technique, you will understand the wide-ranging capability of dualPortal in the spine surgeries that we perform every day.

We have assembled the world's greatest dualPortal surgeons from Korea and the US to not only lecture but more importantly, provide hands-on cadaver training. The small group cadaver sessions will enhance the learning experience provided in the didactic sessions. Our goal is to provide that the absolute best educational experience for all the participants.

I cannot wait to see the excited faces of the participants as they learn about the technique at the Symposium. I see so many surgeons with the same look as I teach the dualPortal technique across the US. I know that you too will come away from the Symposium blown away by dualPortal spinal endoscopy!

# THANK YOU TO OUR CORPORATE PARTNERS

FOR SUPPORTING THE 4<sup>TH</sup> ANNUAL AMPLIFY SURGICAL<sup>®</sup> ENDOSCOPIC SPINE SYMPOSIUM  
featuring dualPortal<sup>®</sup> and dualX<sup>®</sup>SLIM technologies

## DIAMOND SPONSORS



## GOLD SPONSORS



## SILVER SPONSORS



# THANK YOU TO OUR DIAMOND SPONSORS!



Transforming the Ordinary

# THANK YOU TO OUR GOLD SPONSORS!



Transforming the Ordinary

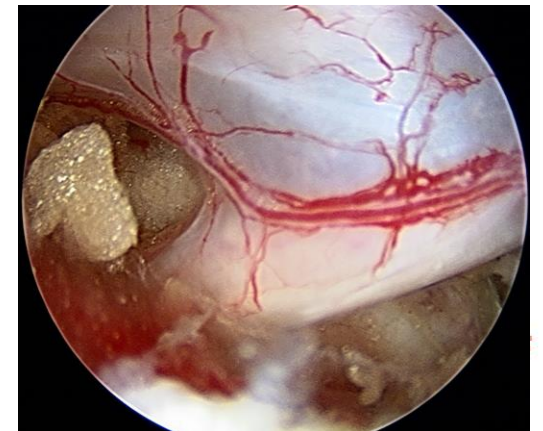
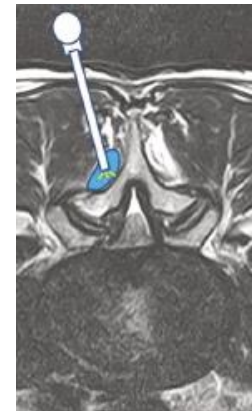
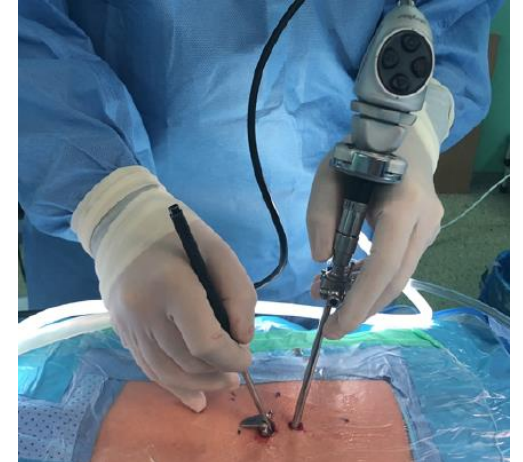
# THANK YOU TO OUR SILVER SPONSORS!



Transforming the Ordinary

# Endoscopic Spine Surgery

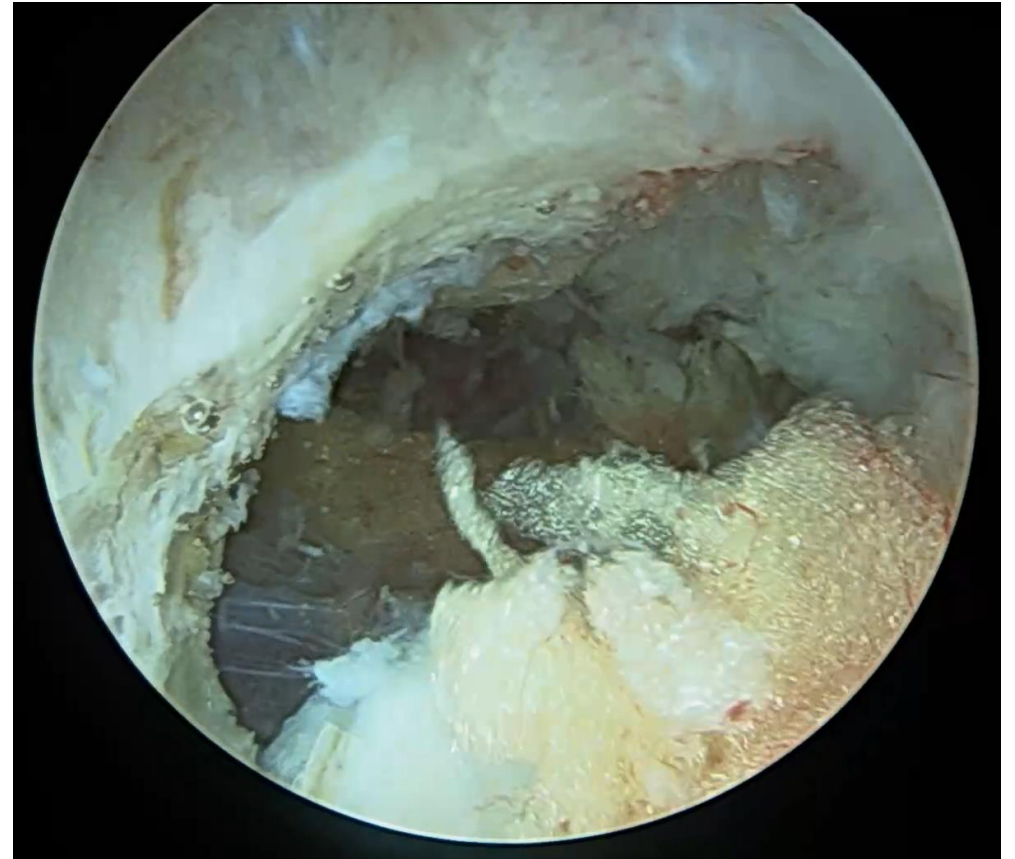
- Uniportal and dualPortal
- Water based endoscopy
  - Working space exploits a potential space in the spine
  - Creating water bubble over the lamina
  - Constant inflow and outflow of irrigation
  - Optimizes visualization





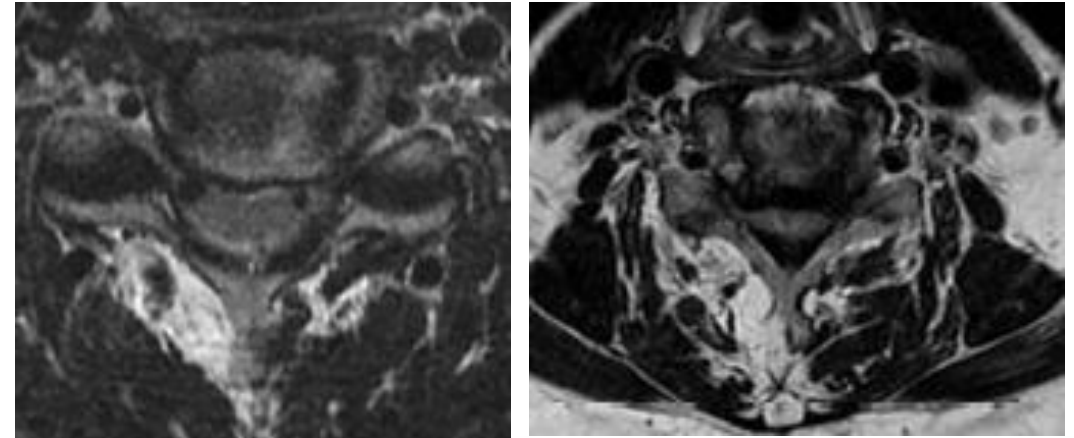
# dualPortal Spinal Endoscopy

- dualPortal: endoscopic viewing portal + separate working portal
  - Decouples of the endoscopic camera with the surgical instruments
  - 4 mm HD scope can access previously hard to reach areas
  - Enhanced visualization, greater flexibility and versatility



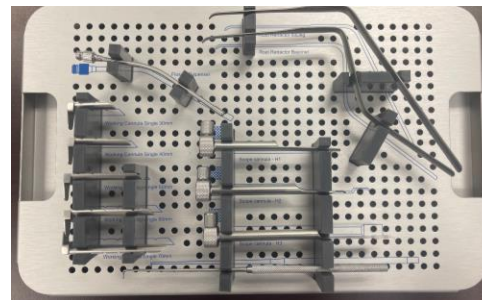
# Wide Ranging Indications

- Lumbar
  - Lumbar disc herniation
  - Lumbar stenosis
  - Lumbar spondylolisthesis
- Cervical (off-label)
  - Foraminal stenosis
  - Cervical stenosis
- Thoracic (off-label)
  - Thoracic disc herniations
  - Thoracic stenosis
  - OLF



# Perfect for the Outpatient ASC Setting

- Easy to start in ASC
- Arthroscopic equipment already exists in most ASCs
- Basic spine instruments to perform most dualPortal surgeries



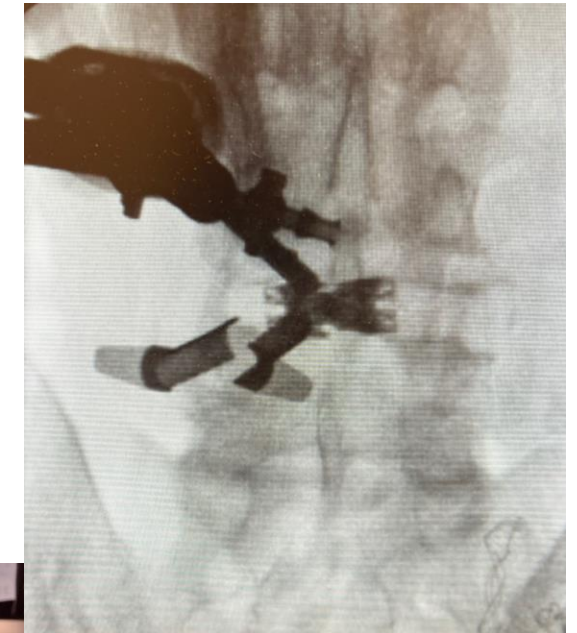
# Advantages of dualPortal Spinal Endoscopy

- Built for interlaminar work
  - Central stenosis
  - Synovial facet cyst
- Cross court action
  - Lateral recess stenosis
  - Foraminal stenosis
- Versatile
  - Access to L5-S1
  - Revision cases



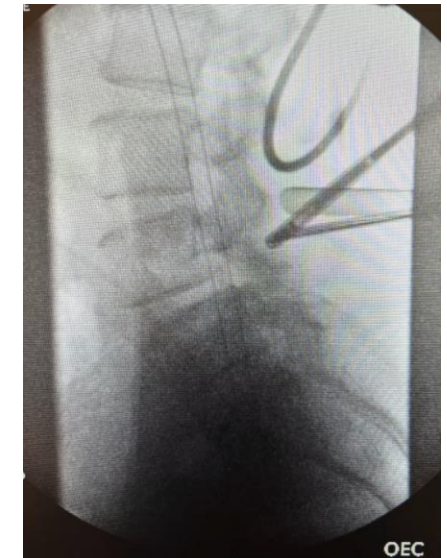
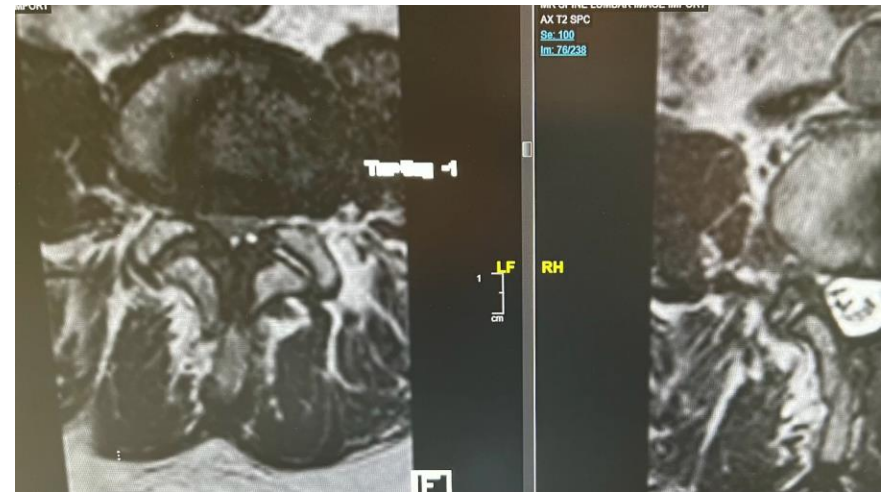
# Morbid Obesity

- Surgery performed with the same size incisions as thin patients
- Potentially reduced infection and wound healing risk
- No need for large incisions to expose, long tubular retractors to visualize



# What's the Role of dualPortal?

- Interlaminar decompression
- dualLIF: dualPortal + dualX TLIF
- Just as safe and effective as microscopic and uniportal techniques



# Learn Endoscopy the Right Way

- Live surgery observation, cadaver experience
  - Learn from the masters
  - Dual Portal Symposium
- Network of endoscopic masters
- Creating US-Korea alliance for education and research

March 29 | UCI Health | 7:00 AM

**AMPLIFY** SURGICAL 4th Annual Endoscopic Spine Symposium  
featuring dualPortal & dualIX technologies

Register: <https://amplifysurgical.com/4th-annual-symposium/>

**Symposium Faculty**

 Dr. Dan Y. Park Orange, CA	 Dr. Cheol-Woong Park Daegu, S. Korea	 Dr. Dong-Hwa Heo Seoul, S. Korea	 Dr. Charla Fischer New York, NY
 Dr. Samuel Cho New York, NY	 Dr. Jon J.W. Yoon Philadelphia, PA	 Dr. Hank Lee Busan, S. Korea	
 Dr. Min Eju Park Busan, S. Korea	 Dr. Andrew Chung Glendale, AZ	 Dr. Ki Ejin Chang San Diego, CA	
 Dr. Mune Hoang Houston, TX	 Dr. Sahab Hashmi Orange, CA	 Dr. Young San Ko Daegu, S. Korea	

**Gala Dinner**

