

Getting Started with dualPortal[®] Endoscopic Spine Surgery

Samuel K. Cho, MD

Chief
Spine Surgery
Mount Sinai West

Professor
Department of Orthopaedic Surgery
Department of Neurological Surgery
Icahn School of Medicine at Mount Sinai

Director
Spine Surgery Fellowship
Mount Sinai Health System



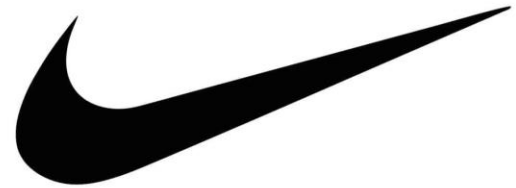
Icahn School
of Medicine at
**Mount
Sinai**

Disclosures

- Royalty: Globus, SIBone
- Stocks: Amplify Surgical
- Consulting: ATEC, Medtronic
- Fellowship Support: AOSpine North America, Globus

My journey

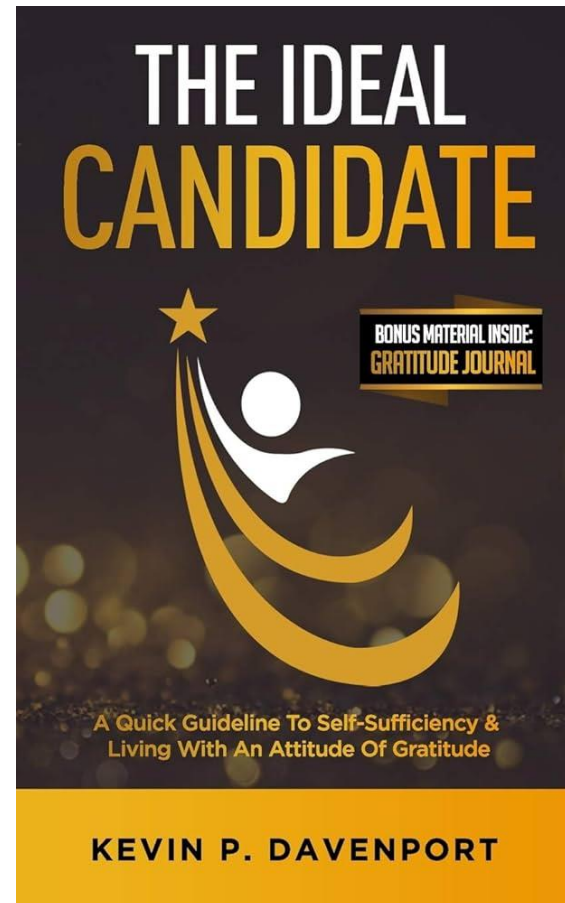
- Hearing about it circa 2018
- Watching a few YouTube videos
- A cadaver lab on Saturday morning
- Booking a case



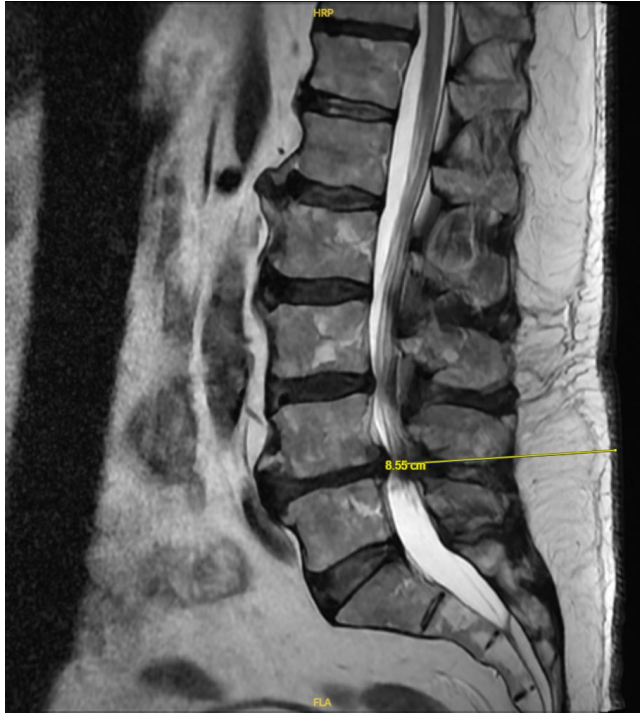
JUST DO IT

My First Case

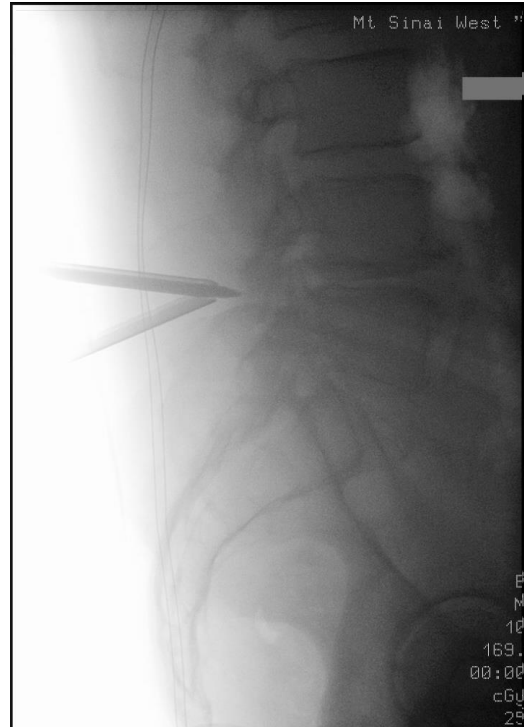
- August 2
 - The first day with my new fellow
- 63 y/o M with a foot drop
 - 246 lbs w/ BMI >35
 - On ASA for recent cardiac stenting
 - No TXA allowed
 - No hypotension allowed



My First Case



My First Case



My First Case

- 3 hours
- Cursing every other word
- Enough water to take a bath later...

- Footdrop improved
 - No cane after 3 months



My Eureka Moment

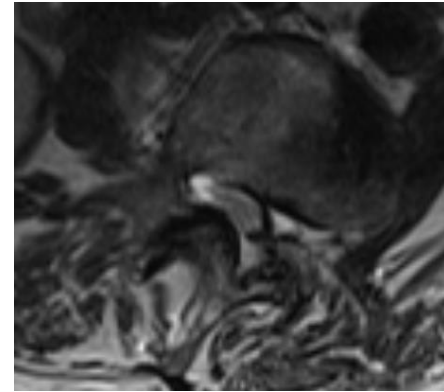
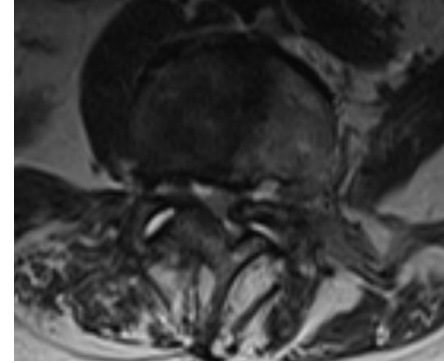
- Making of a potential working space
- Other than close-up view via endoscope, same surgery
- Versatile
 - Hemilaminotomy/discectomy
 - Laminectomy, uni or bi
 - TLIF
 - Transforaminal discectomy
 - Multi-level



What's the Big Deal?

A Game Changer

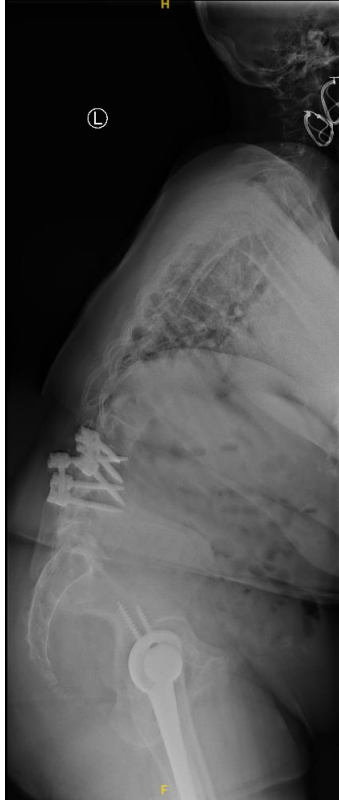
68y/o F with degen scoli



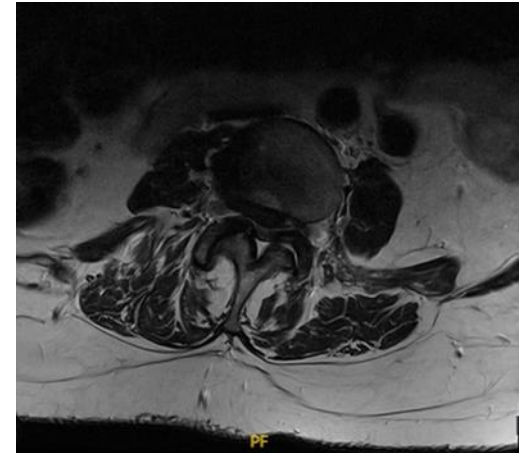
68y/o F with degen scoli



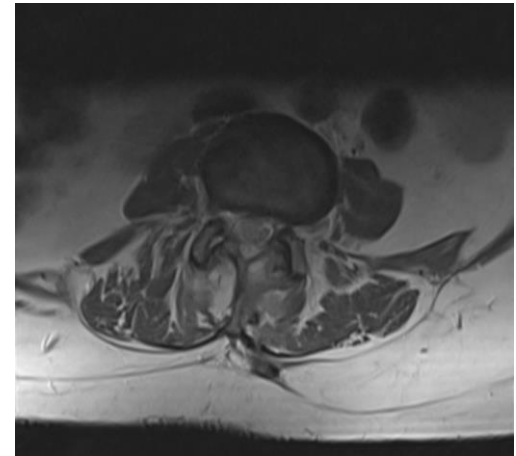
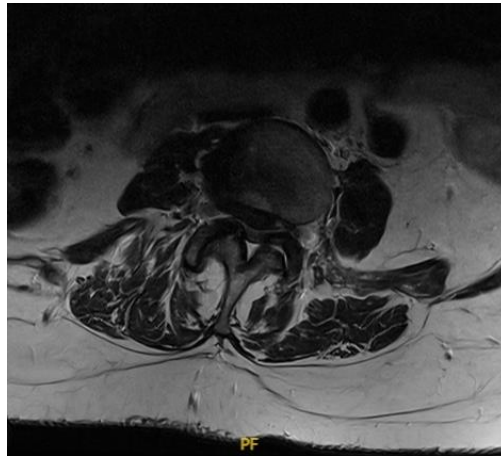
72y/o F with degen scoli



75y/o F with degen scoli

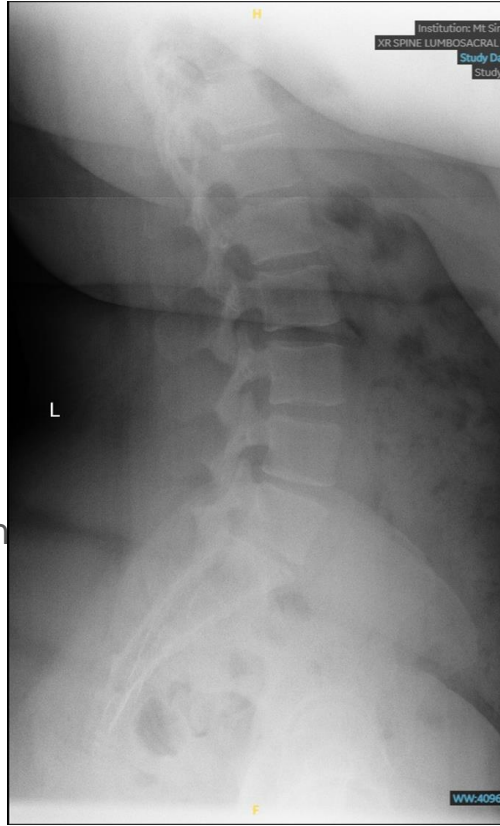


75y/o F with degen scoli

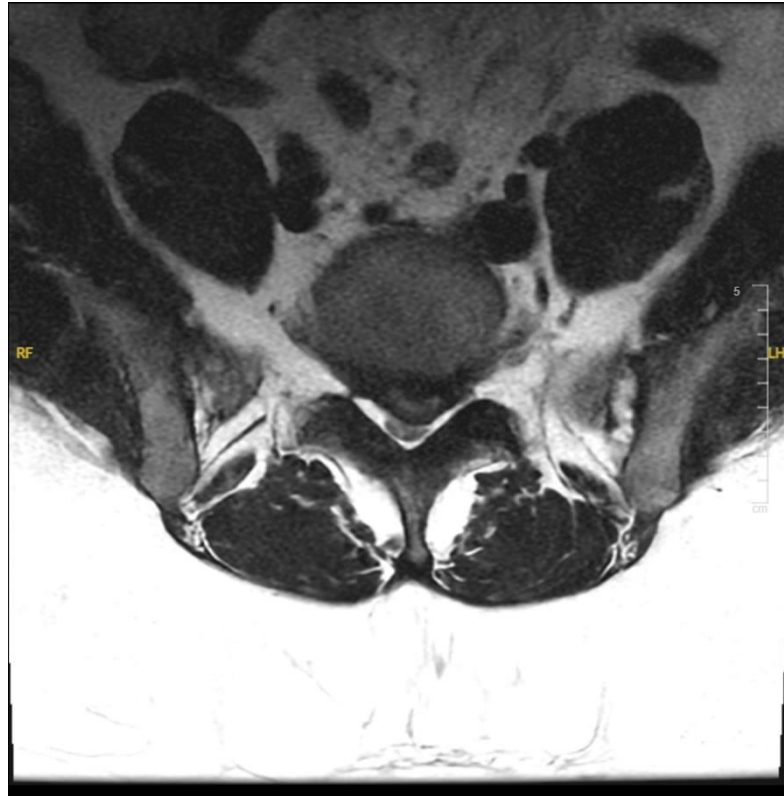


Can endoscopy work in super obese patients?

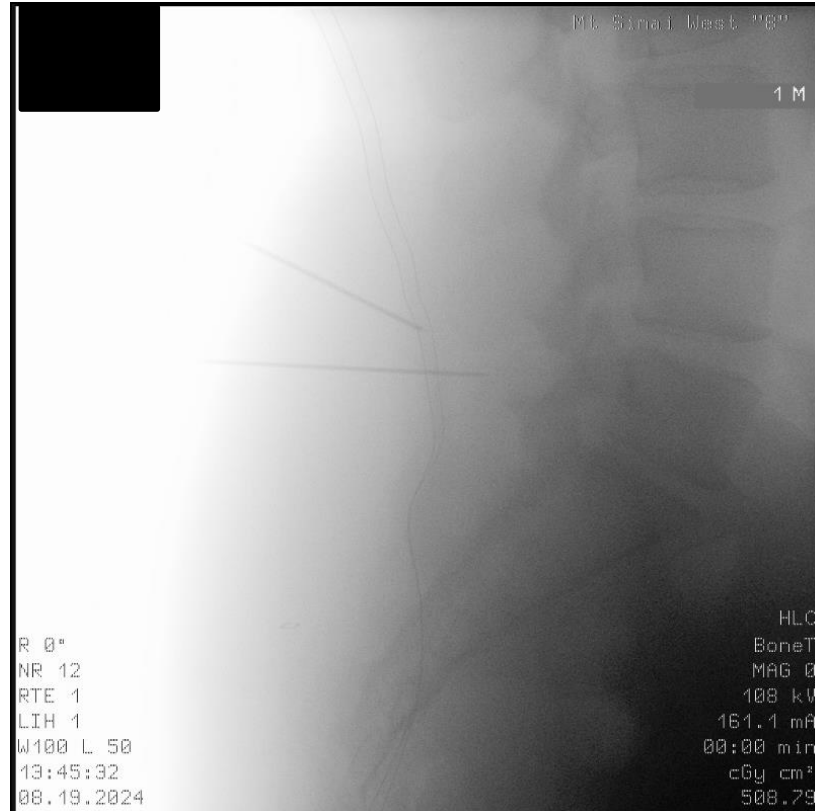
- 28F w/ cauda equina
 - BMI 45.48 kg/m²
 - Will need bilateral decompression



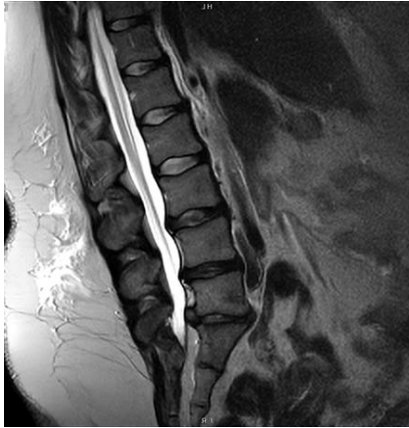
Can endoscopy work in super obese patients?



Can endoscopy work in super obese patients?



Can endoscopy work in super obese patients?

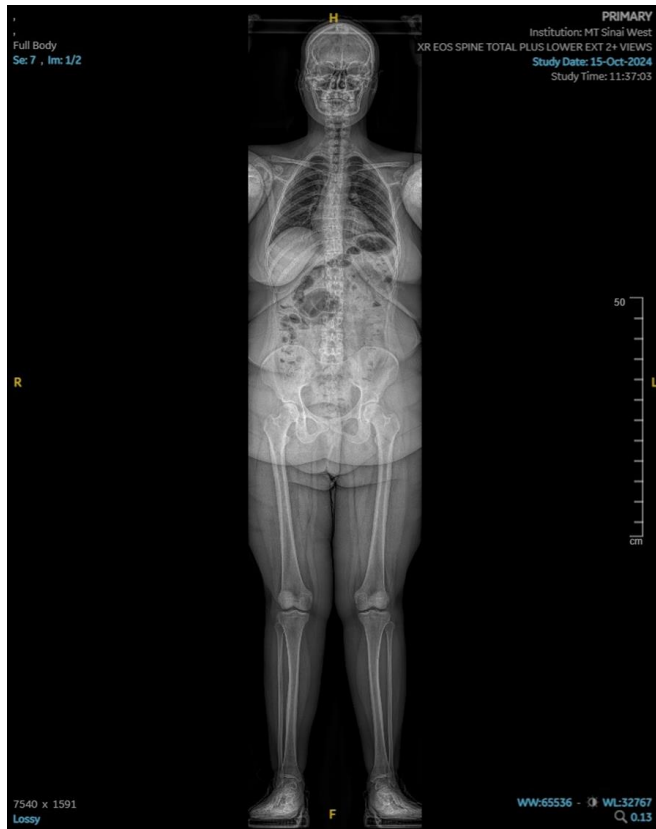


Can endoscopy work in super obese patients?



Can endoscopy work in super obese patients?

BMI 42



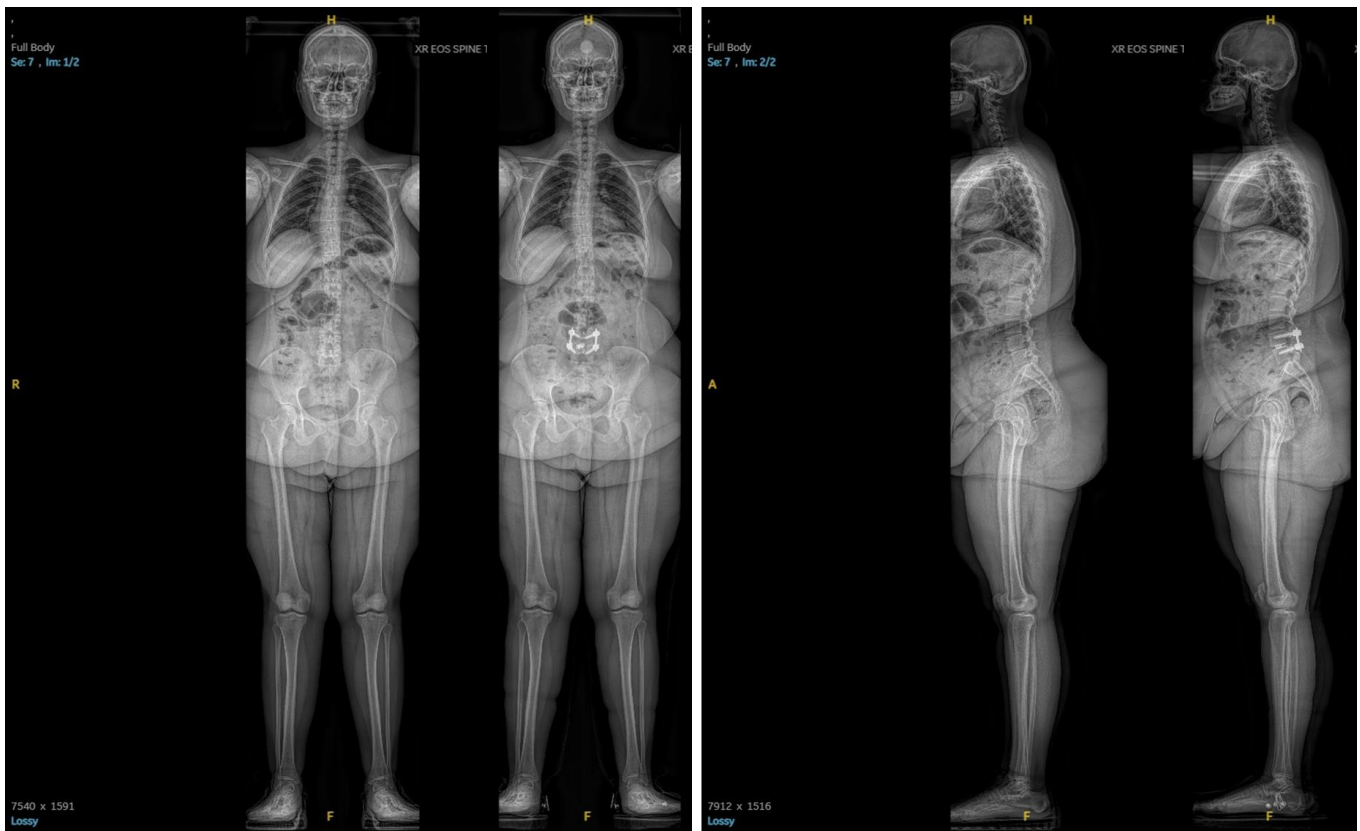
Can endoscopy work in super obese patients?

BMI 42



Can endoscopy work in super obese patients?

BMI 42



72y/o M with cauda equina



What Do You Need to Start?



My Setup

Head



Feet

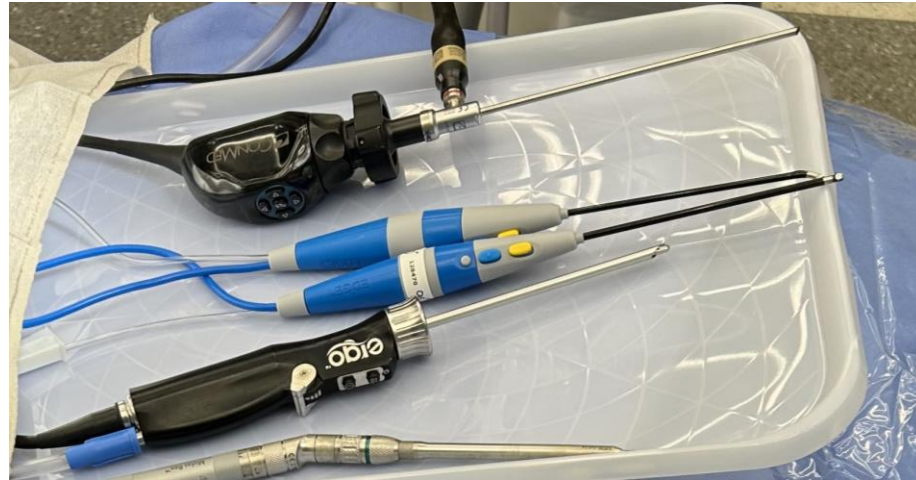
Draping



Trays



Drills/RF wands



See One, Do One, Teach One



See One, Do One, Teach One

