

AMPLIFY[®]
SURGICAL

SEEING IS
BELIEVING



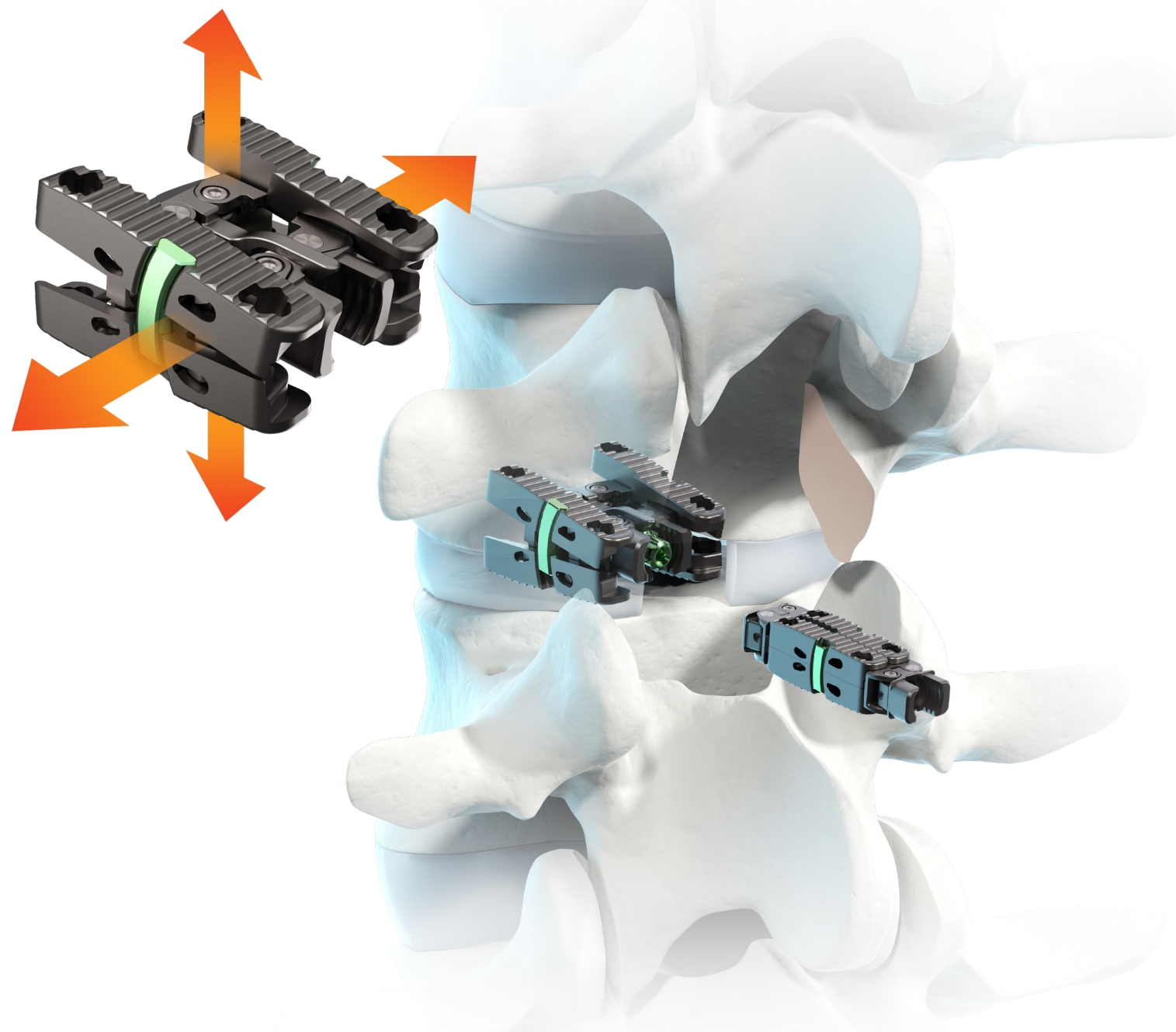
dualX[®] + dualX[®]Slim

Dual Expanding Interbody Fusion System

dualX[®]Slim

Dual Expanding Interbody Fusion System

dualX[®]Slim transforms the fusion environment from insertion to spinal restoration by delivering a powerful dual-expanding implant through a minimally-invasive or endoscopic approaches.



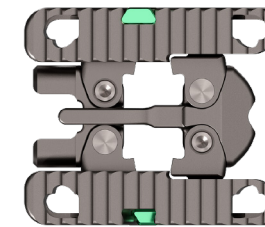
Engineered for Spinal Fusion



Collapsed width designed to reduce neural retraction

Low profile protects endplates during insertion

10 mm Insertion Width

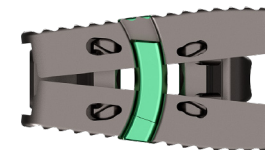


Minimize subsidence with the largest footprint in the expandable cage market

Lateral expansion establishes stable footprint

Large, center bone graft chamber for post-expansion grafting

20 mm Fully Expanded Width



Powerful vertical expansion restores disc height for decompression

Vertical expansion assists in direct and indirect decompression

Multiple lordotic angles restore sagittal balance

8°, 12°, 15°, 18°*

dualX[®]

Three Unique Implants for Posterior, Transforaminal and Lateral Approaches



T/PLIF

- Heights 7mm* expanding to 17mm*
- Width 12mm expanding to 21mm
- 0°, 8°, 12° and 15° Lordosis*



TLIF

- Heights 7mm* expanding to 17mm*
- Width 12mm expanding to 21mm
- 0°, 8°, 12° and 15° Lordosis*



LLIF

- Heights 7mm* expanding to 17mm*
- Width 13mm expanding to 22mm
- Final Length 40 to 60mm
- 0°, 7°, 12° and 18° Lordosis*

* Some sizes and angles available by request

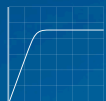
dualPortal[®]

Endoscopic Approach



dualX[®]

Dual Expanding
Interbody Fusion



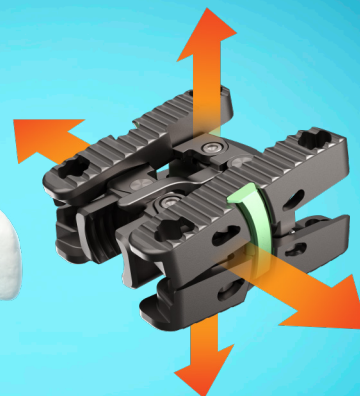
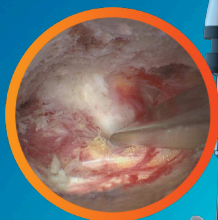
Shallow
Learning Curve



Greater
Flexibility



Enhanced
Visualization



A novel **two-portal endoscopic** approach to the spine

Amplify Surgical is a privately-held spinal device company that aims to revolutionize **minimally-invasive spine surgery** by transforming ordinary procedures with groundbreaking surgical solutions.

For more information or to place an order:

765-AMPLIFY (765-267-5439) | info@amplifysurgical.com | amplifysurgical.com

AMPLIFY[®]
SURGICAL

Please refer to package insert for current warnings, precautions, and instructions for use.