

dualPortal[®] 2.0
ENDOSCOPIC SYSTEM

DESIGNED TO BE SEEN

A COMPREHENSIVE SOLUTION
FROM O.R. PREP TO FINAL CLOSE

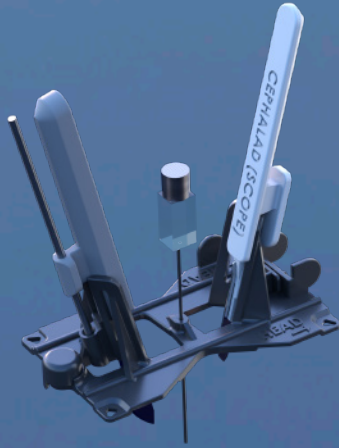


AMPLIFY[®]
SURGICAL

dualPortal® 2.0

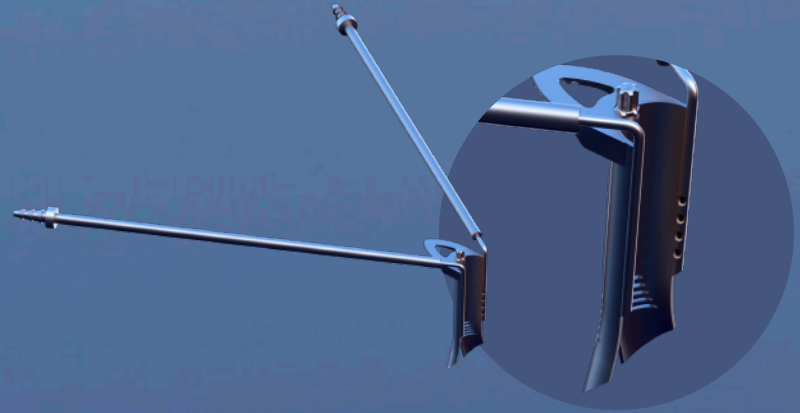
ENDOSCOPIC SYSTEM

FROM O.R. PREP TO FINAL CLOSE



MULTI-PURPOSE GUIDE

- Designed for controlled guidance on proper position, angle, and depth for creating the two incisions needed for dualPortal® surgery.
- Provide guidance for the scope and instruments to triangulate and “meet” at the correct site.



dualPortal® 2.0 CANNULA

- Cannula provides retraction at the incision site for easier instrument insertion.
- Distal flare for additional soft tissue retraction.
- Active in-flow and out flow for even better visualization.
- Expanding tip for secure placement & retention.



WATER DAM

- Control/Contain water overflow during procedure.



DEPTH GAGE

- Measure the tissue depth from skin to lamina.



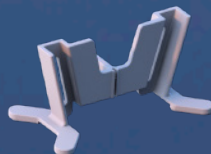
TISSUE DISSECTOR

- Dissect and loosen soft tissue to prepare space for creation of the endoscopic working space.



ERGONOMIC SCOPE HANDLE

- Ergonomic scope handle to distribute weight and provide support.



FLAG GUIDE

- Designed to provide additional aid in guiding instruments throughout the case and increase in efficiency.



BONE WAX DISPENSER

- A syringe-type instrument to dispense small amount of bone wax at the tip and apply it to bleeding bone.
- Unique bone conforming tip.